



BMW 5 Series (E 34, 39) 3 Series (E36) 7 Series (E38)

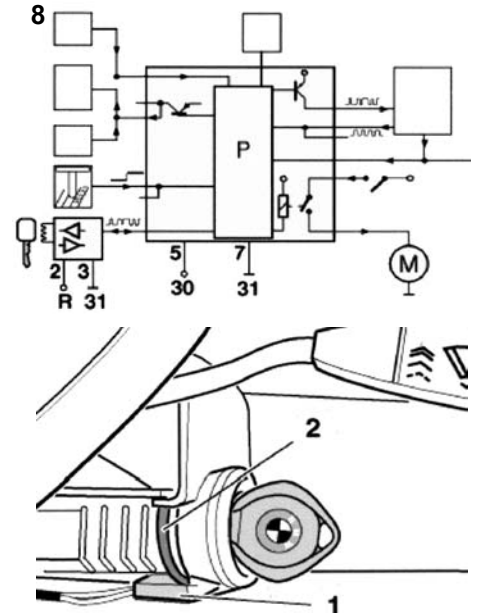
Vehicle can sometimes not be started

If the above complaint is received, there could be several causes:

- Interruption of the power supply for the S/E module (PIN 2 = T. R; PIN 3 = T. 31) and/or control unit for the immobiliser (PIN 5 = T. 30; PIN 7 = T. 31).
- A short circuit between the ends of the coil (1) for the ring antenna and the electrically-conductive rubber ring (2) located below.
- The S/E module interrupts the data traffic between transponder and respective key due to component tolerances.

In such cases, proceed as follows:

- Check the fuse for T. R and T. 30 of the control unit (immobiliser fuse) and, if necessary, replace.
- On vehicles up to model year 15.11.95 replace the above-mentioned rubber ring on the ignition lock. To do this, first carefully remove the ring antenna clipped onto the ignition lock.
- On vehicles up to 15.11.95 also replace the S/E module.
- In addition, the parameters/measured values from the immobiliser control unit should be checked with a diagnosis tester for plausibility. If deviations arise, replace the central locking module (see illustration above).



Bulletin