



BMW 2 Series Active Tourer - changing the cabin air filter

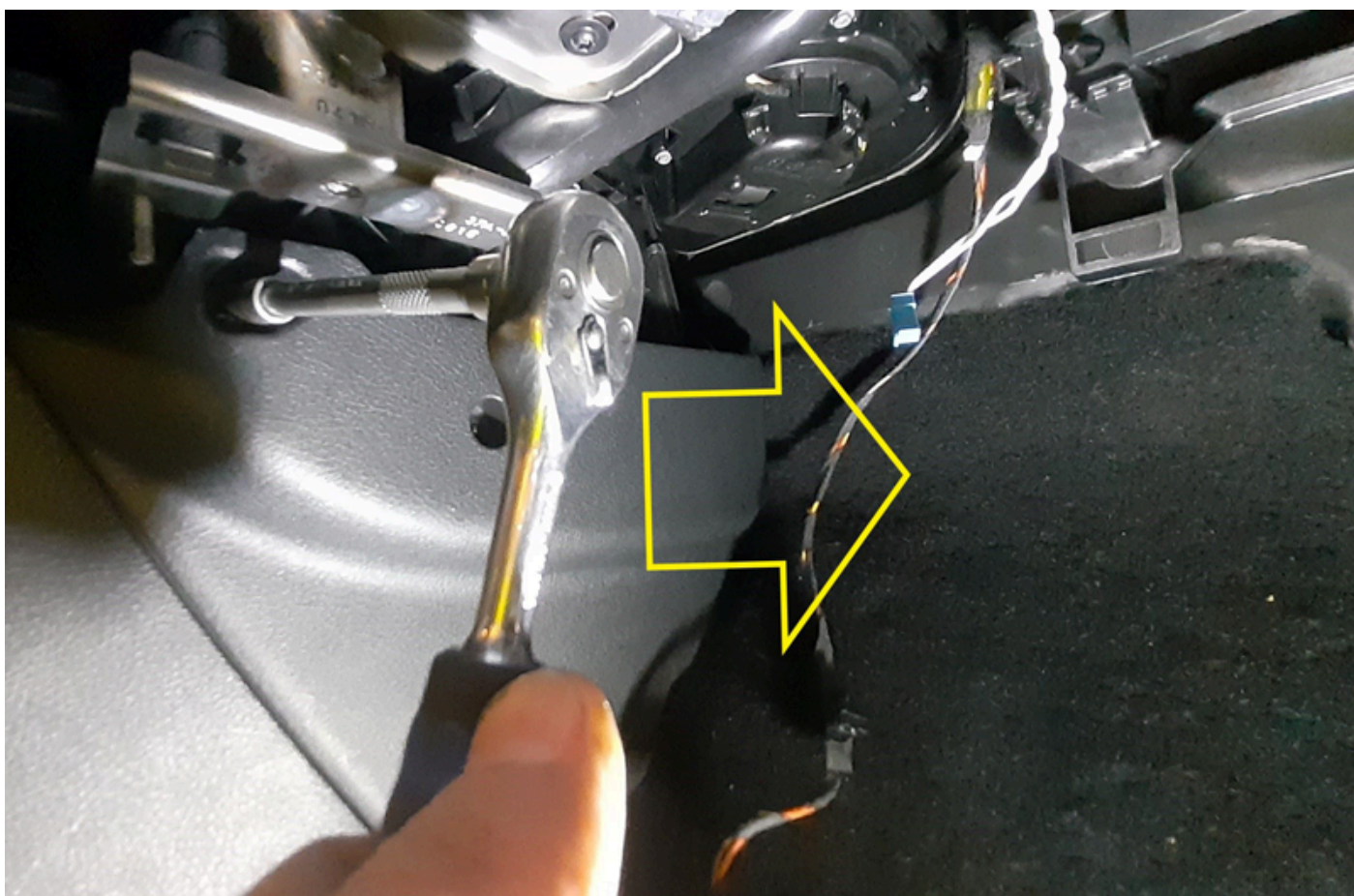
Data sheet	
Manufacturer	BMW
Vehicle model	2 Series Active Tourer (F45)
Engine	All
Year of manufacture	2014 - 2021
Symptoms	Replacing the cabin filter

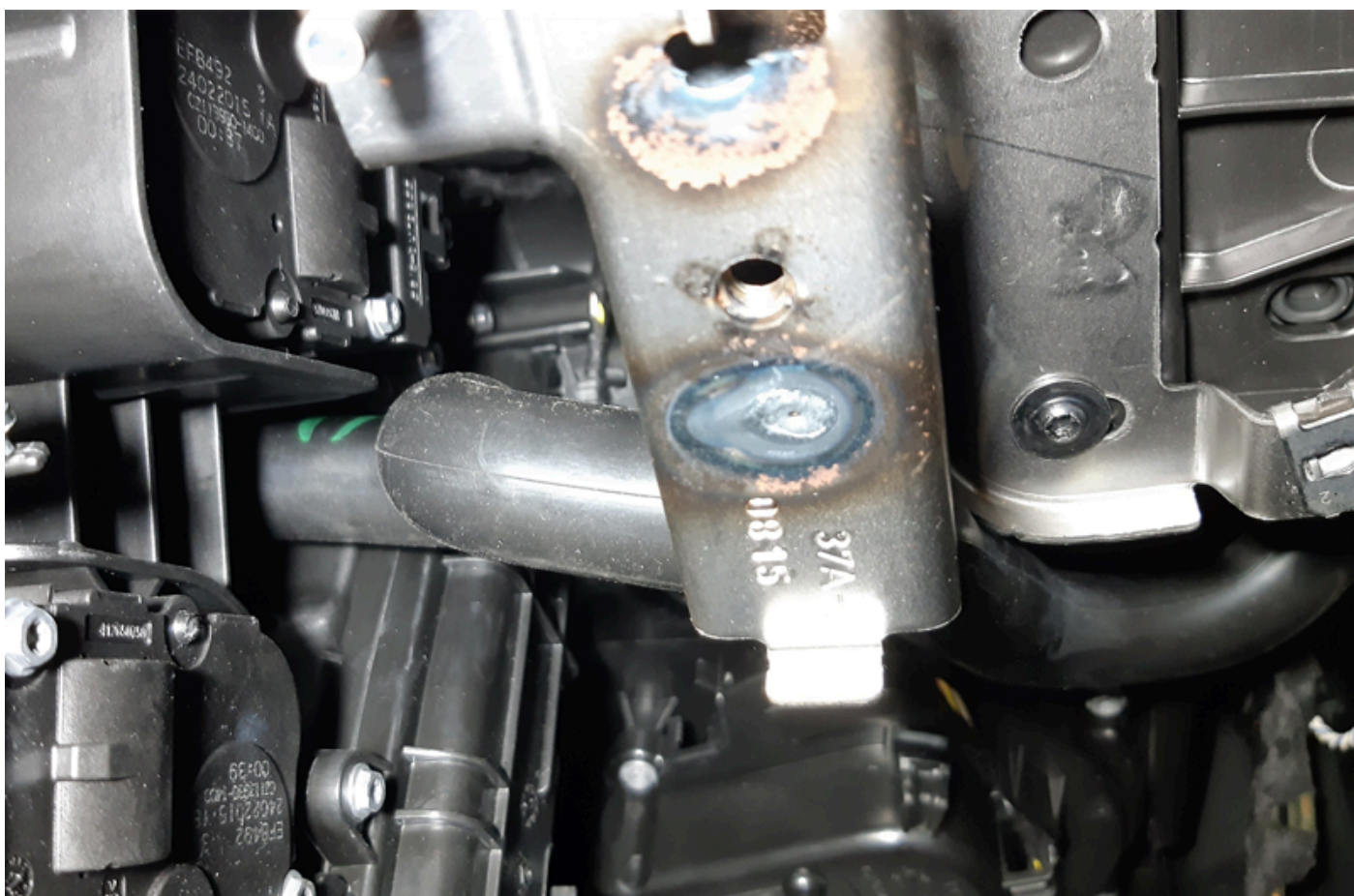
Important safety note

Pollen filter replacement for the BMW 2 Series Active Tourer

When replacing the cabin air filter on the above-mentioned vehicle, some points should be observed and therefore you should proceed as follows:

- [Figure 1](#): Remove the trim in the footwell on the passenger side by first of all removing the screws (2x).
 - [Figure 2](#): Remove the left cover in the footwell on the passenger side, again by first removing the two screws
 - [Figure 3](#): Remove the air outlet by removing the screw (1x) and pulling the air outlet to the right
 - [Figure 4](#): Pull off the hose from the heating/air-conditioning housing to the right
 - [Figure 5](#): Unlock and remove the cover from the heating/air-conditioning housing
 - [Figure 6](#): Pull out the cabin filter
- In order to install the new filter, proceed as above but in reverse order.







Reprinting, distribution, reproduction, exploitation in any form or disclosure of the contents of this document, even in part, is prohibited without our express, written approval; indication of the

document source is also required. The schematic illustrations, pictures and descriptions serve only for the purposes of explanation and representation of the instructions and cannot be used as a basis for installation or assembly work. All rights reserved.