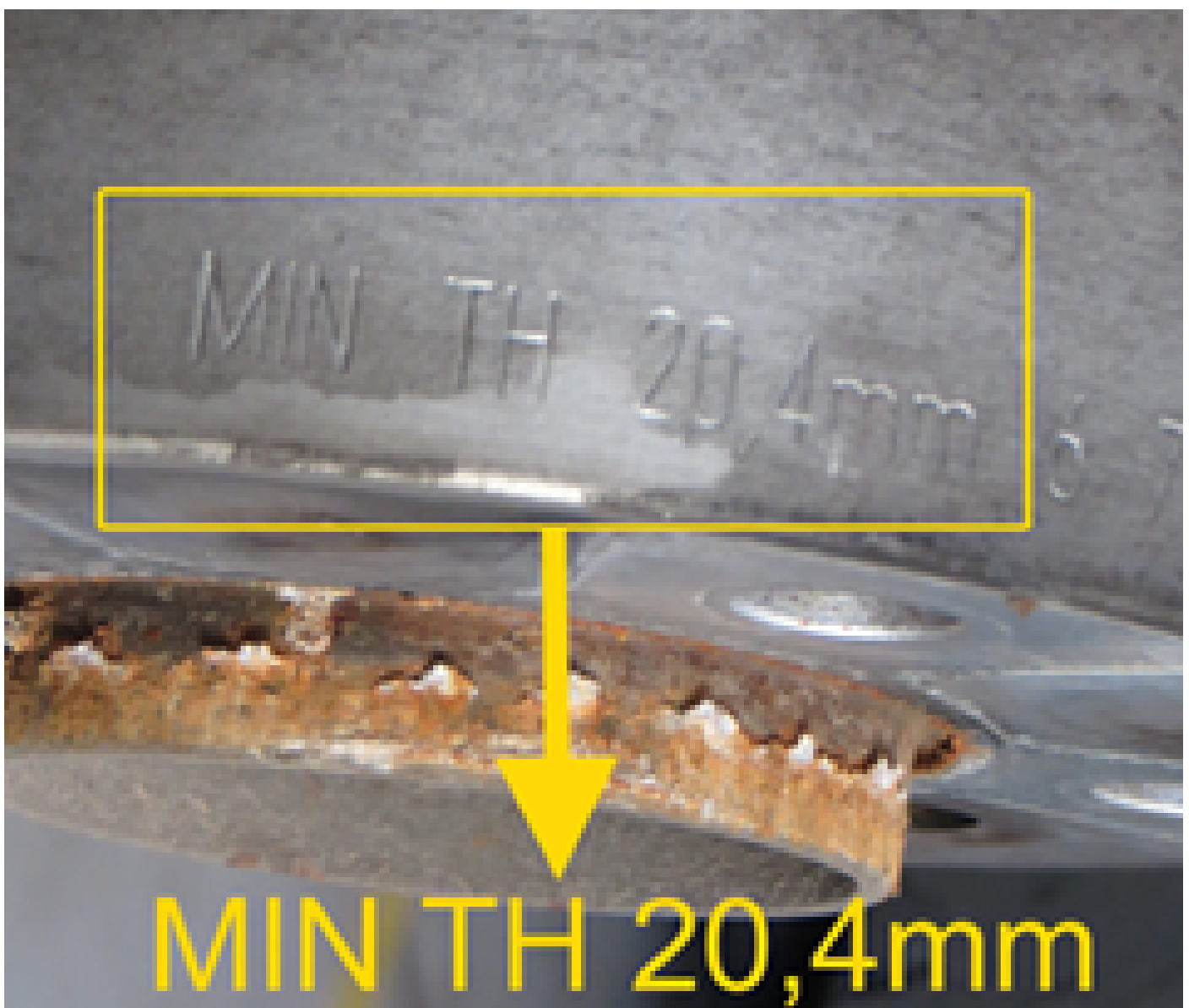


# Testing the minimum thickness of a brake disc | HELLA

## General information

The manufacturer's specification of the minimum thickness defines the wear limit of a brake disc. This value in millimetres has been stamped on the outer edge or on the brake disc chamber.

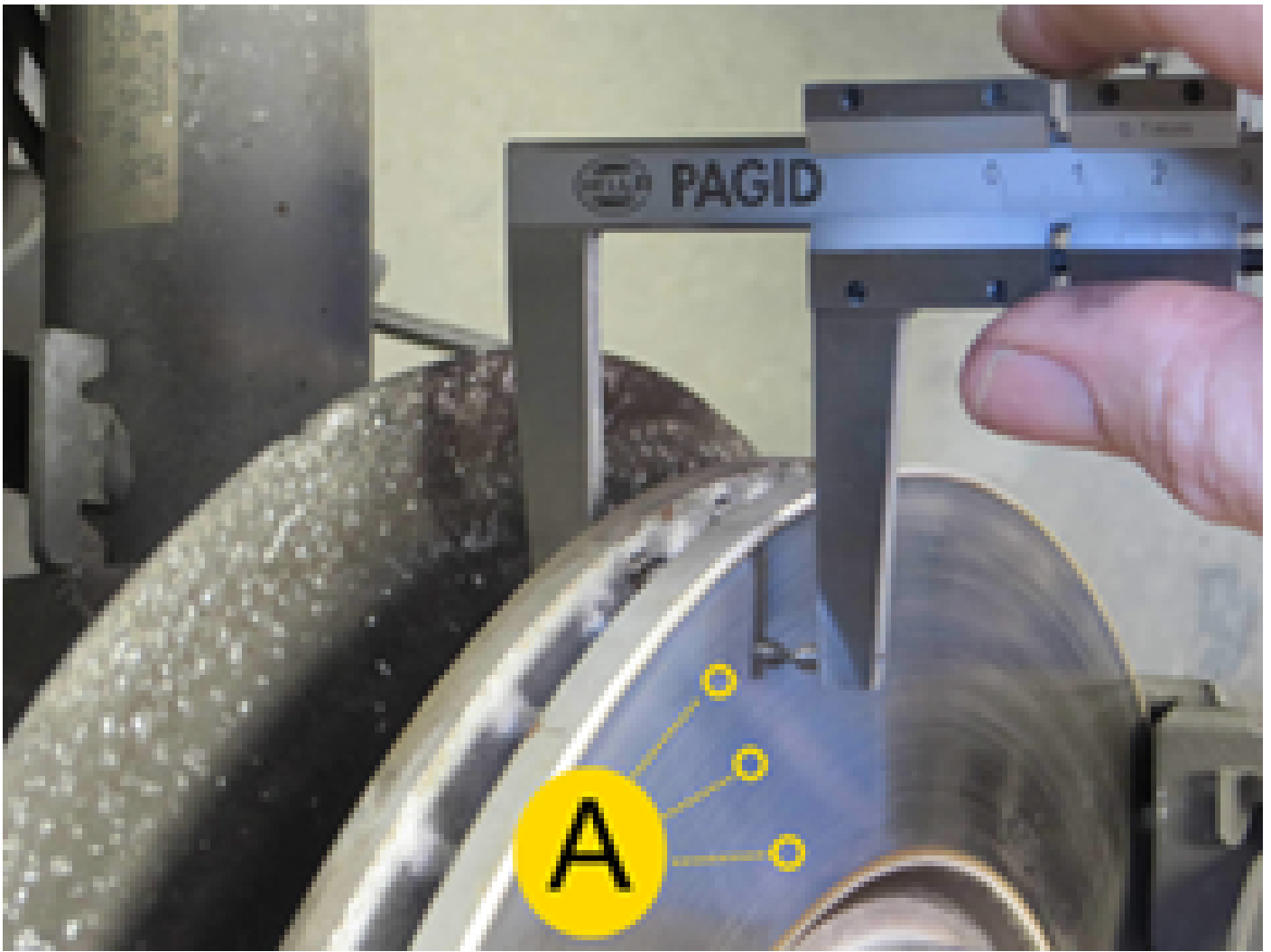
- MIN TH = Minimum thickness



## Testing

Check the wear limit of the brake disc using a suitable tool (brake disc gauge).

Once the setpoint value has been reached or undercut, the brake disc must be replaced.



## Repair notes

- Always replace brake discs in pairs.
- Only install new brake pads if the minimum thickness of the brake discs has not been undercut.

In this context, please observe the specifications in the maintenance and repair notes provided by the respective vehicle manufacturer.