

# Headlamp light patterns / light distribution | HELLA

## Halogen headlamps

### Ford Kuga, model year: 2017

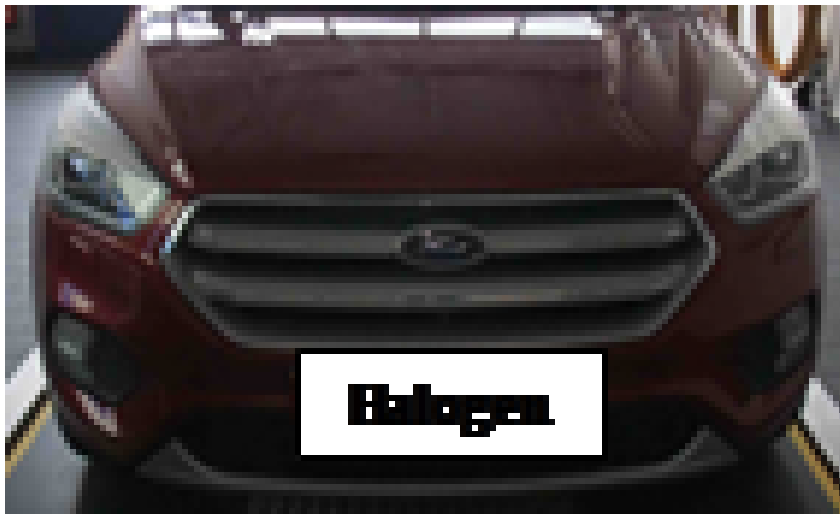
The measurement results of the light distribution of the halogen headlamp of a Ford Kuga produced in 2017 serve as the example. In this case, too, prior to carrying out the test, the correct location for beamsetting is to be selected and all requirements met.

Light patterns / light distribution with acceptable adjustment.

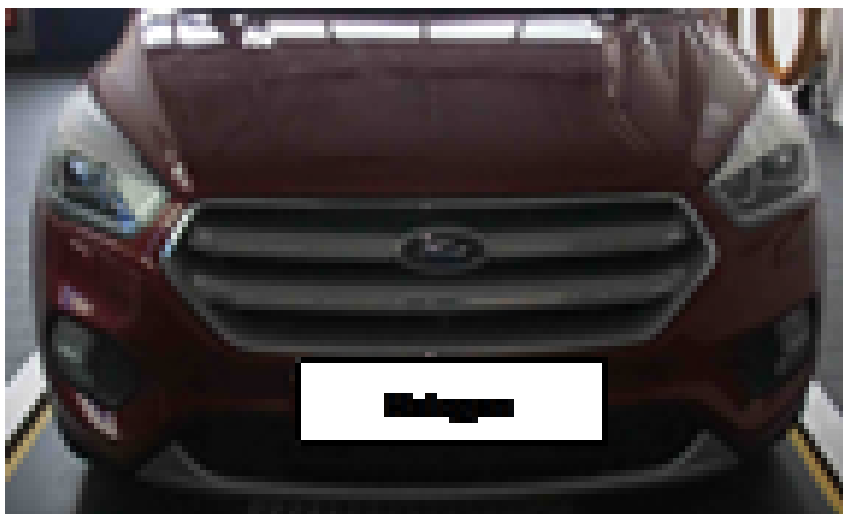
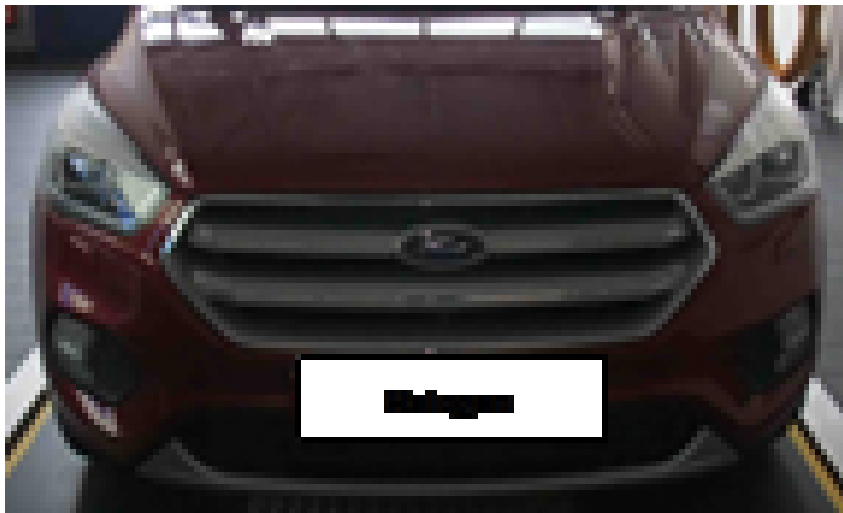


- Low beam + high beam

- Beamsetter analog + digital







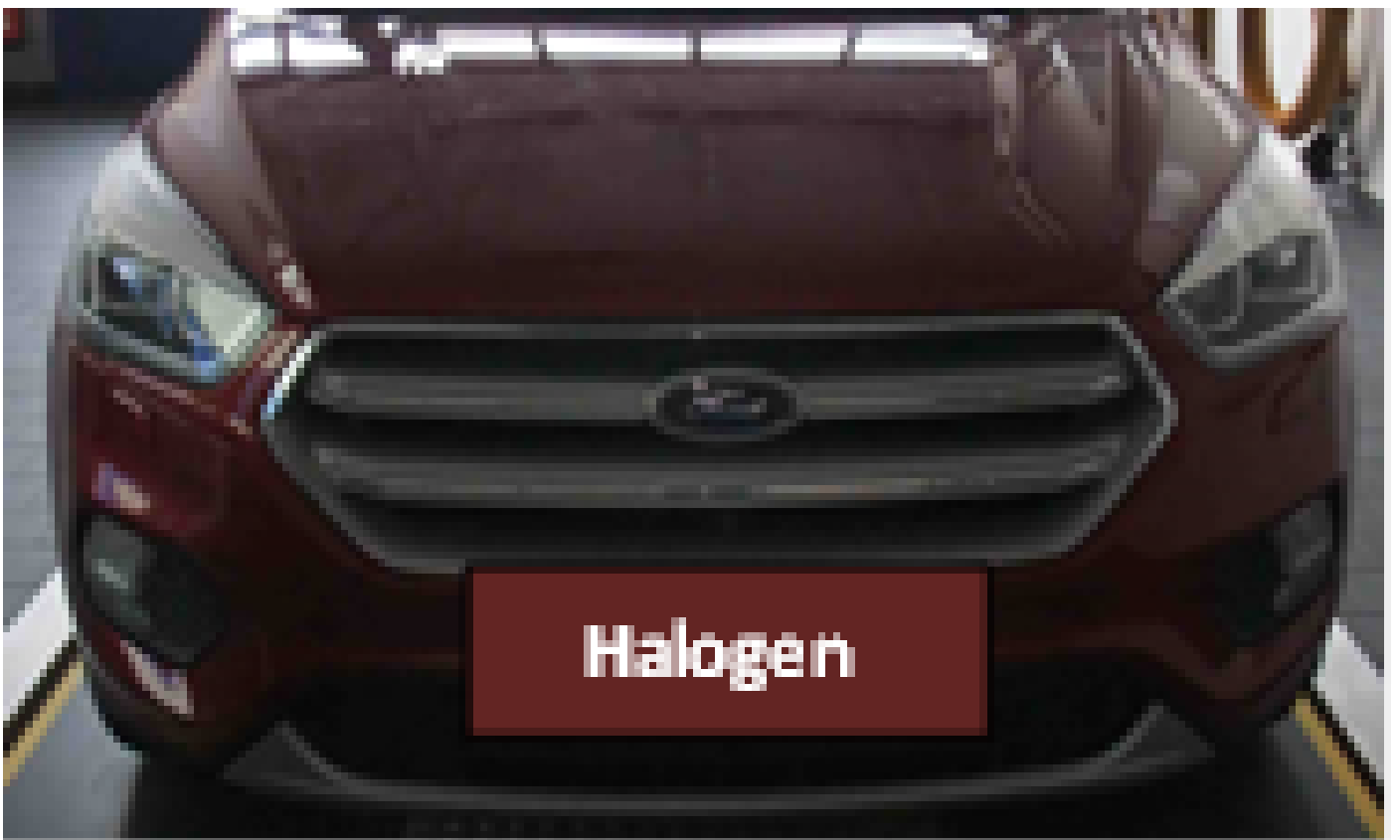
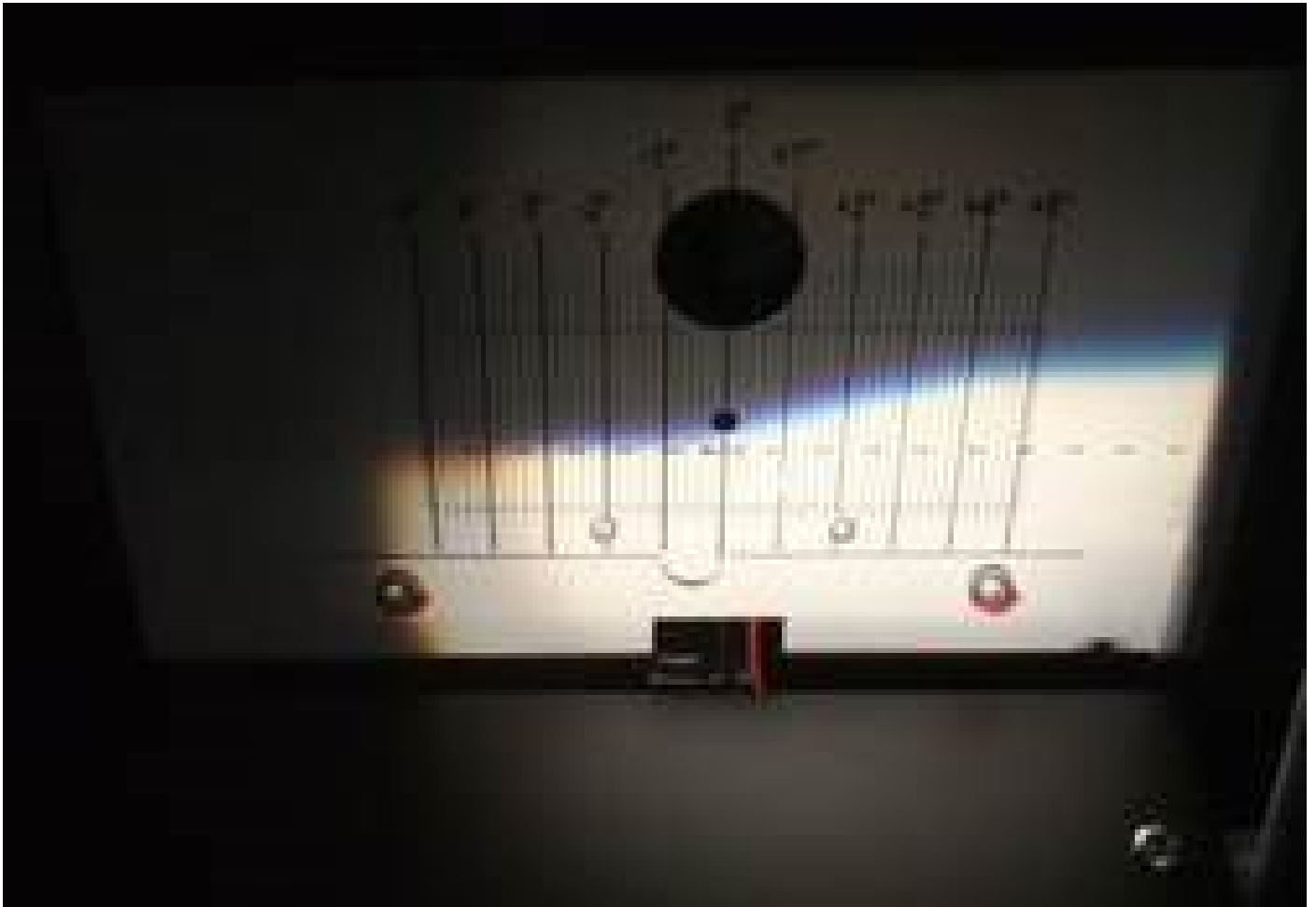
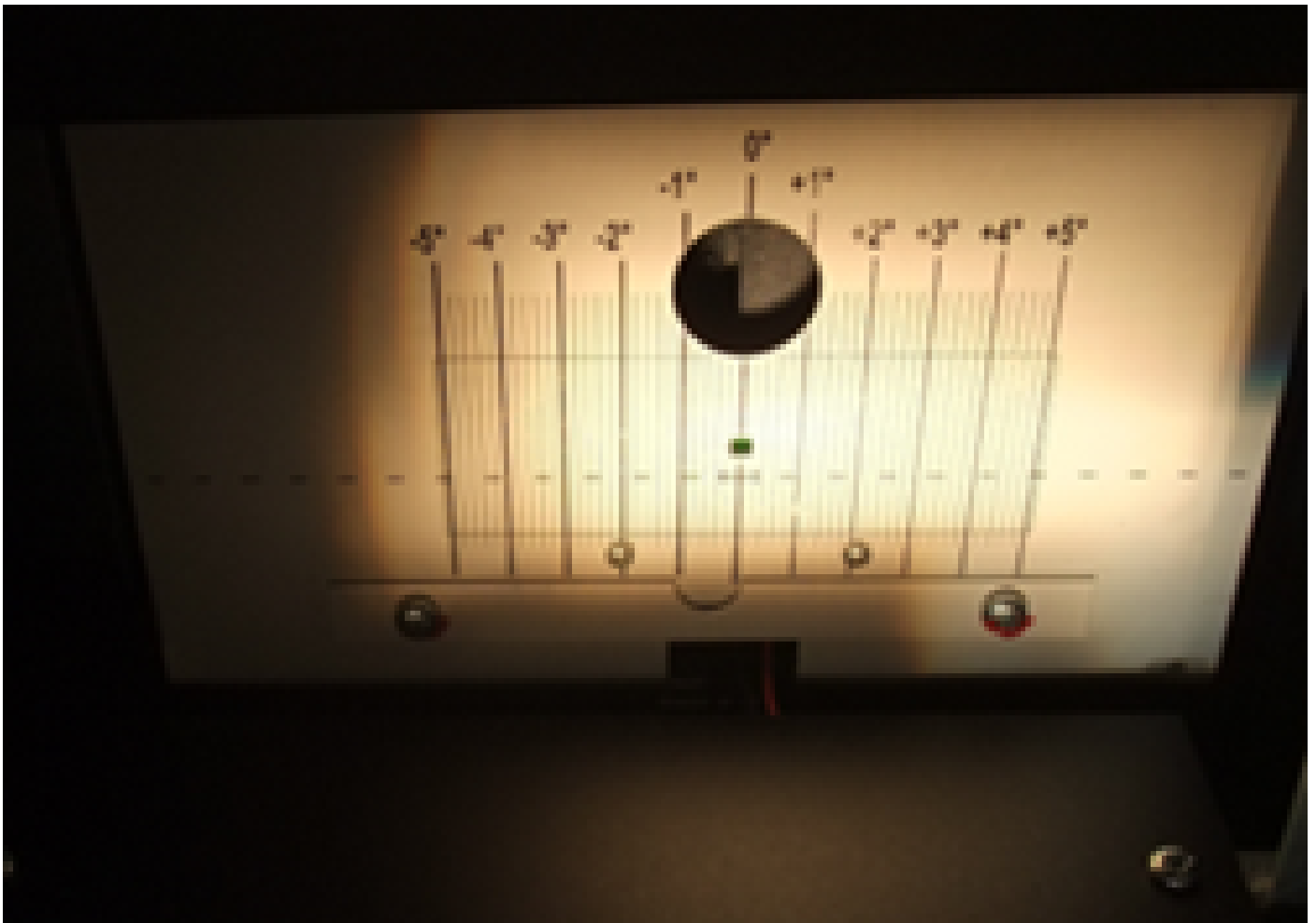


Fig.1

Fig.1: Vehicle front view

## Beamsetter: analog





Light patterns - light distribution

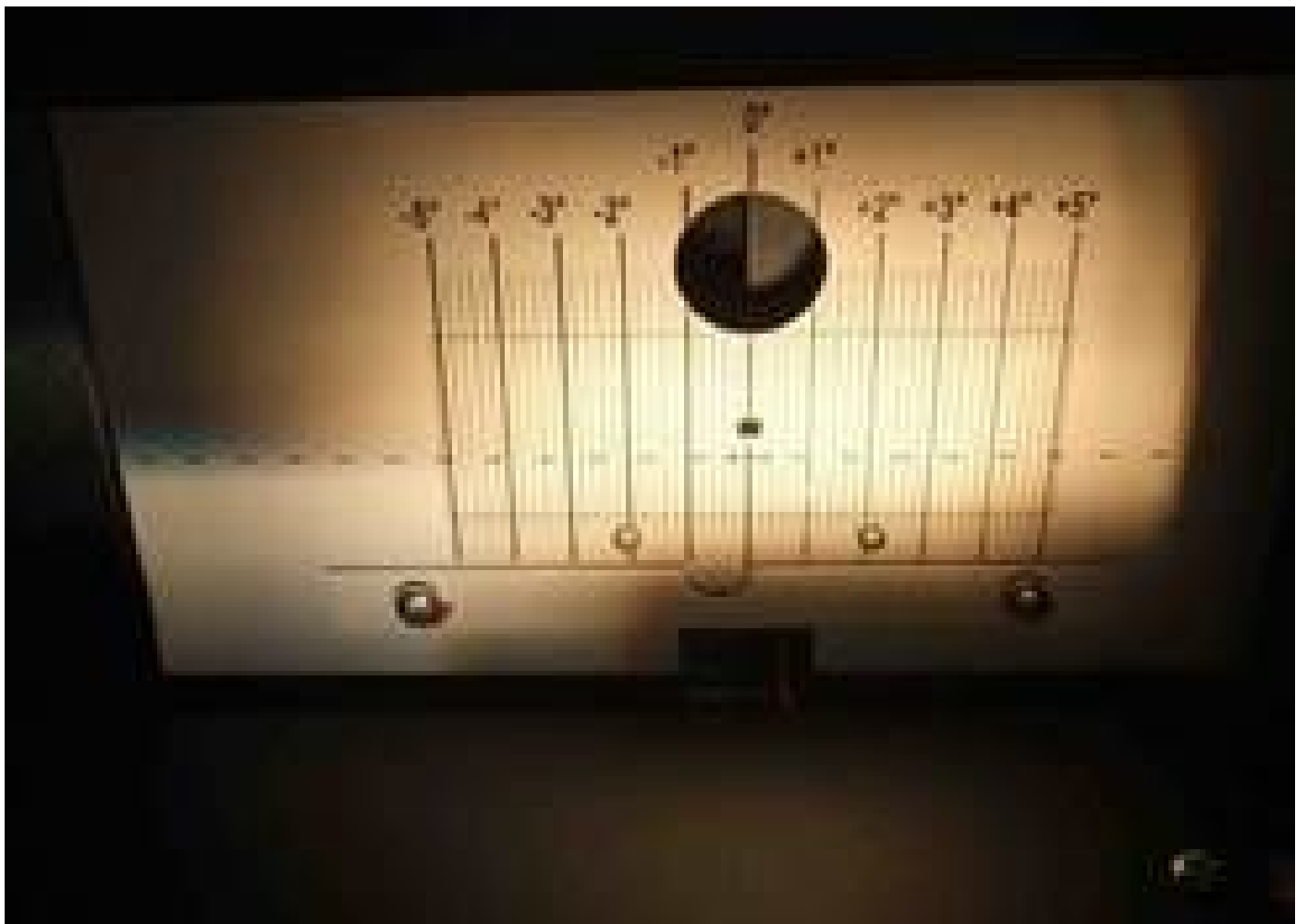
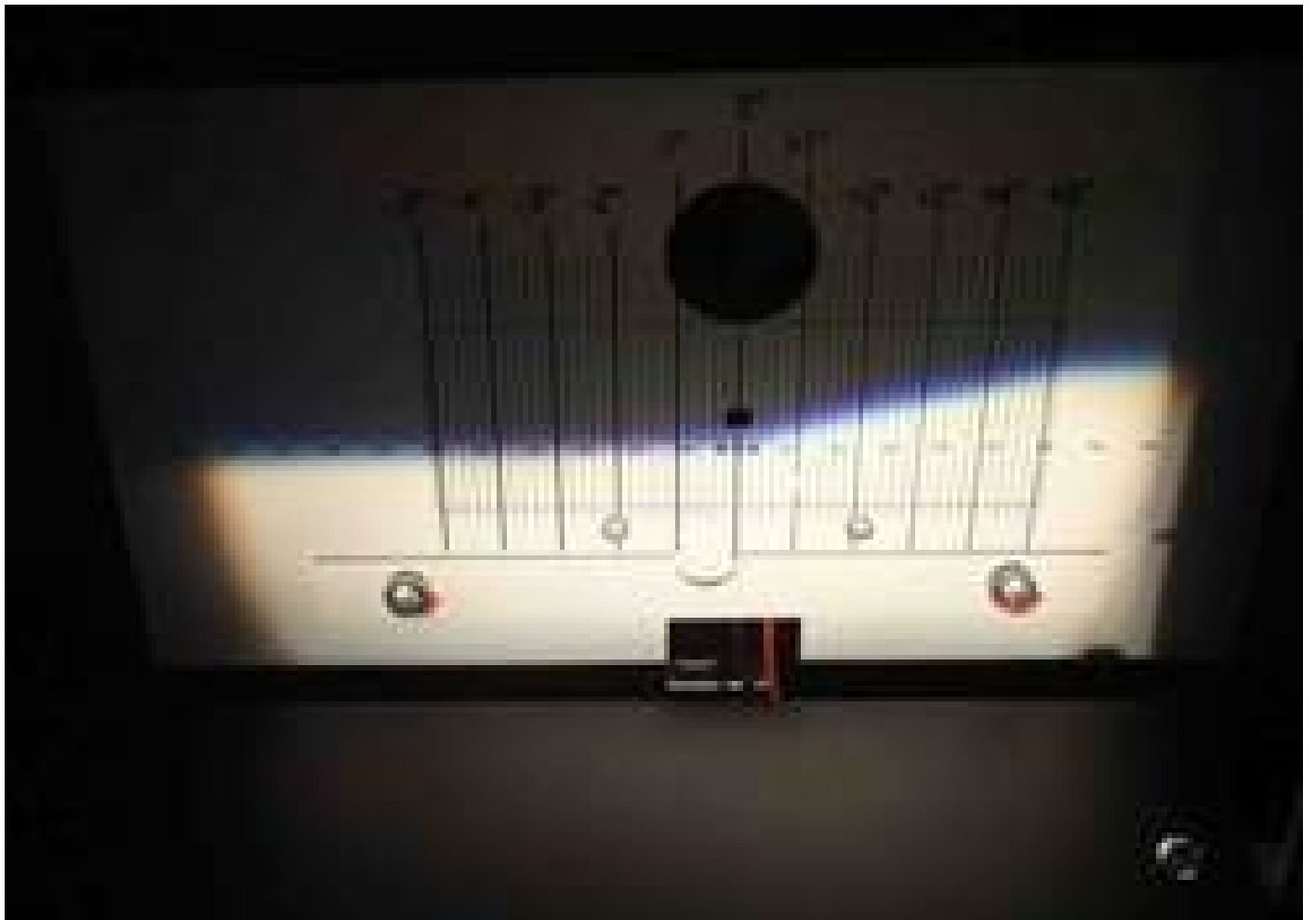
Beamsetter / analog

Fig.2: - Low beam; H7;

Fig.3: - High beam; H15;

Fig.2; Low beam; left

Fig.3 High beam; left





Light patterns - light distribution

Beamsetter / analog

Fig.4: - Low beam; H7;

Fig.5: - High beam; H15;

Fig.4; Low beam; right

Fig.5; High beam; right

Ford Kuga = Halogen - version

Beam setting: mechanical

H7/H15

Hella article no.

8GH 007 157-xxx

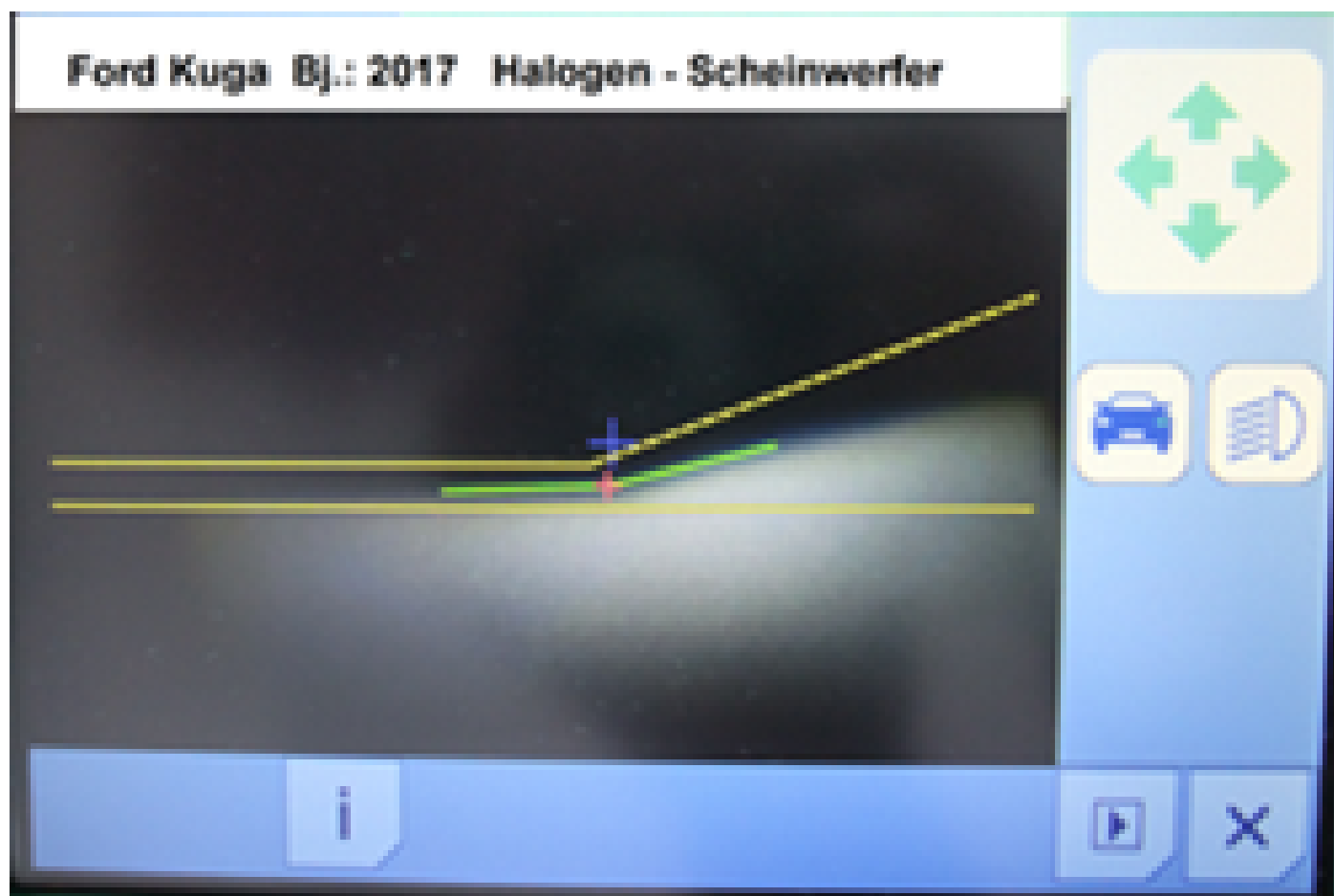
8GJ 168 119-001

The vehicle must stand on a level test surface and comply with country-specific regulations.

Observe vehicle manufacturer's instructions.

Headlamp adjustment location

## Beamsetter: digital / camera-based



Light patterns - light distribution

Beamsetter /

digital/ camera-based

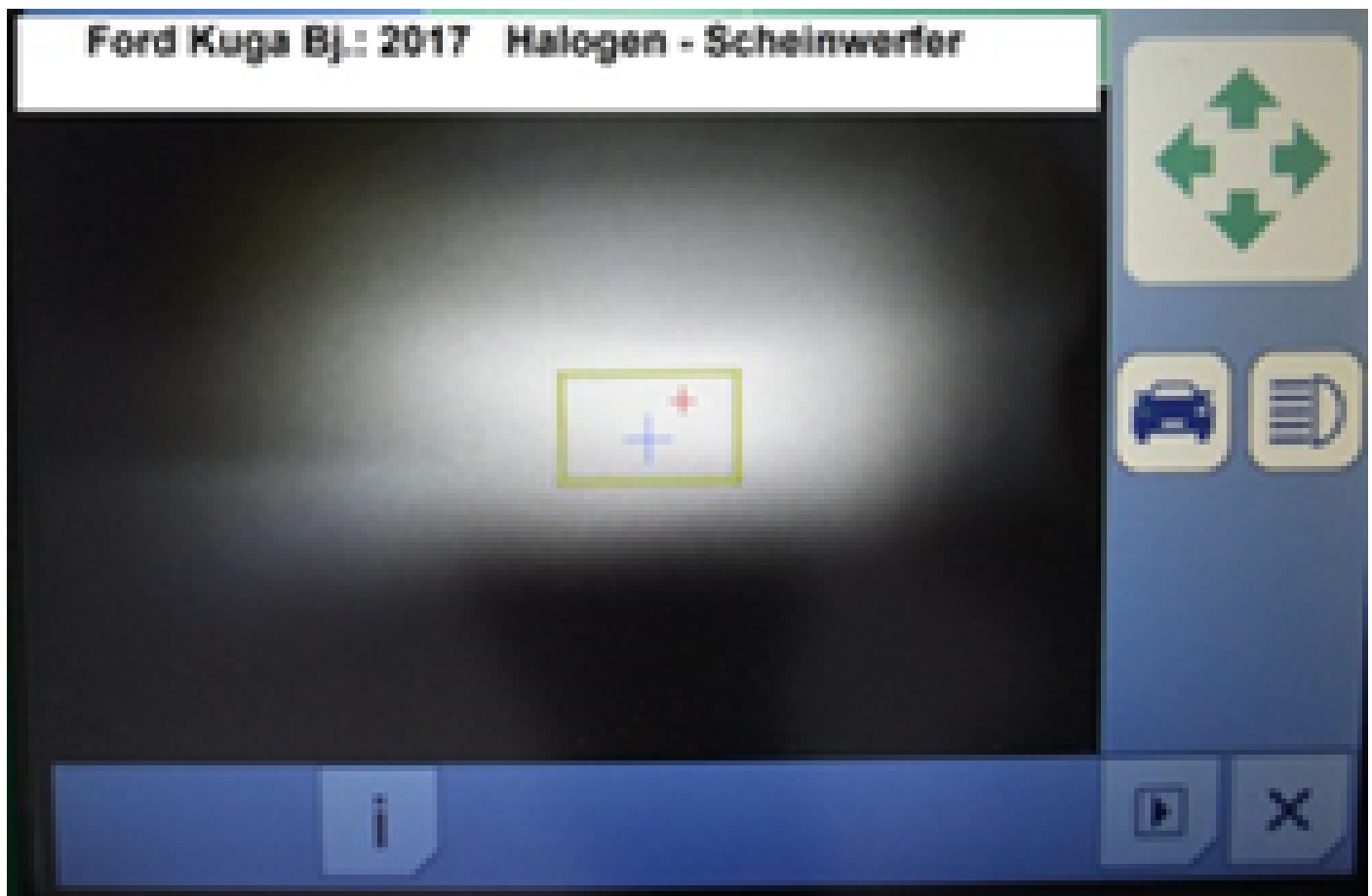
Fig.6: - Low beam; H7;

Fig.7: - High beam; H15;

Fig.6; Low beam; left

Fig.;7; High beam; left





Light patterns - light distribution

Beamsetter /

digital/ camera-based

Fig.8: - Low beam; H7;

Fig.9: - High beam; H15;

Fig.8; Low beam; right

Fig.9; High beam; right





Important:

- Ensure correct battery voltage, connect charger if necessary (Fig.10).

Fig.11

Inclination 1%

Fig.10

Fig.11







Important:

- Perform visual inspection and technical check of headlamp.

Recommendation:

- Replace faulty light sources in pairs

Beamsetter IV -- analog --

Beamsetter V – digital --

### **Important safety note**

Technical information and practical tips have been compiled by HELLA in order to provide professional support to vehicle workshops in their day-to-day work. The information provided on this website is intended for use by suitably qualified personnel only.