



# Subaru Forester - EGR valve fault

## Data sheet

Manufacturer	Subaru
Vehicle model	Forester (SJ)
Engine	Diesel XCDi
Year of manufacture	2014-2018
Symptoms	Check Engine warning lamp lights up / EGR valve fault

## Important safety note

## Check Engine warning lamp lights up showing error code P0401

If the Check Engine warning lamp comes on in the above-mentioned vehicle and the error code P0401 (EGR system, exhaust gas flow too low) is stored in the control unit, a faulty or clogged EGR valve may be the cause. In order to remove the EGR valve, you should proceed as follows:

- Remove upper engine cover
- Remove charge air cooler

The installation position of the EGR valve is now visible.

- Disconnect the central connector from the engine harness
- Disconnect the cooling water hoses from the EGR valve (collect escaping coolant)
- Remove the nuts from the two stud bolts of the EGR valve
- Unscrew the stud bolts
- Undo the EGR valve from the EGR cooler:

Loosen lower mounting of the EGR cooler (from the wheel well/underbody)

Push back the EGR cooler by hand and remove the EGR valve

The new EGR valve is installed in the reverse order to its dismantling.

The final steps:

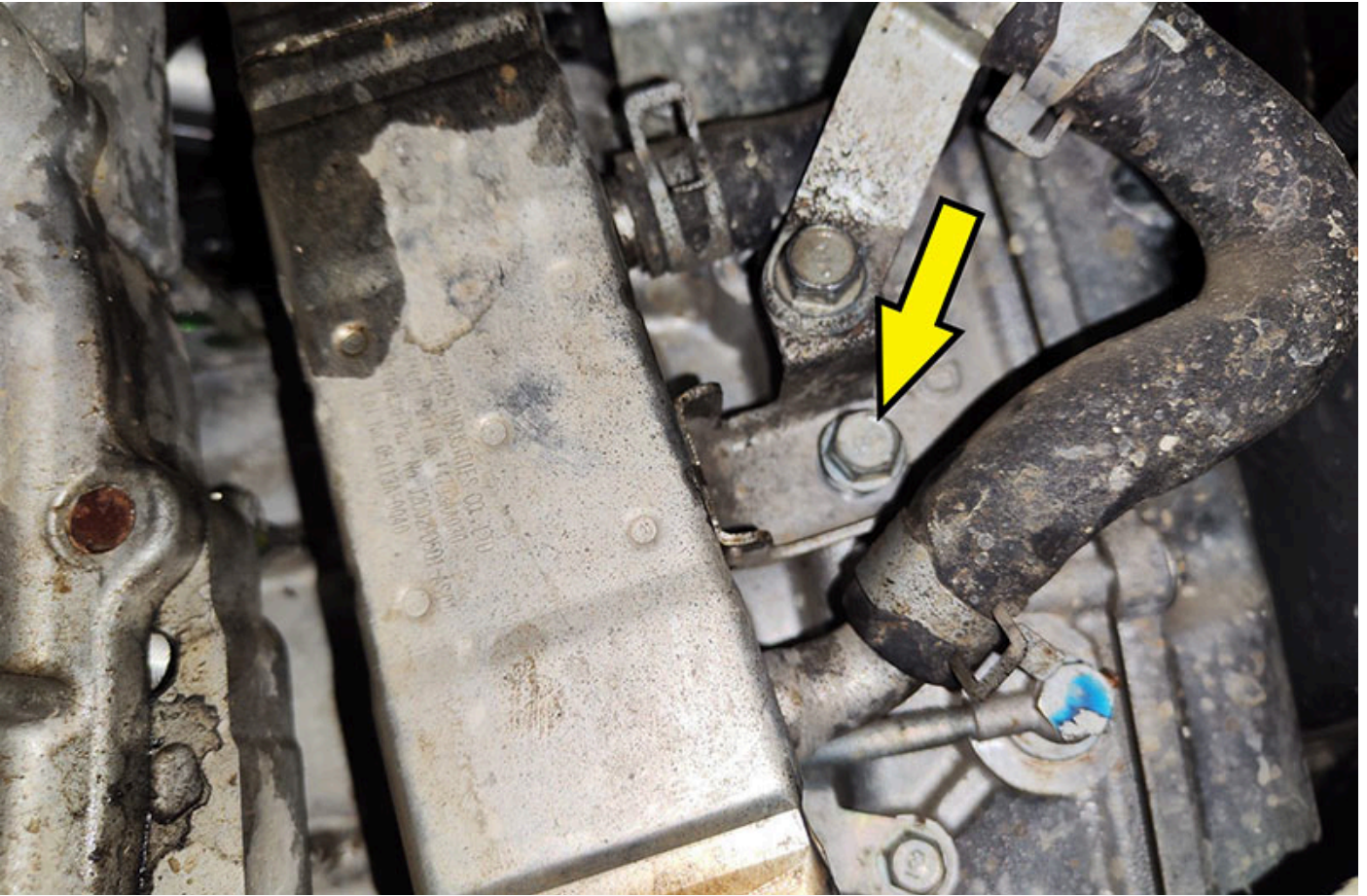
- Top up the coolant and bleed the cooling system in accordance with the vehicle manufacturer's instructions
- Clear error memory
- Carry out a test drive

In some cases, it may be necessary to update the engine control unit software in order to conclude the repair. So as to avoid subsequent errors, the software should be checked and updated if necessary.

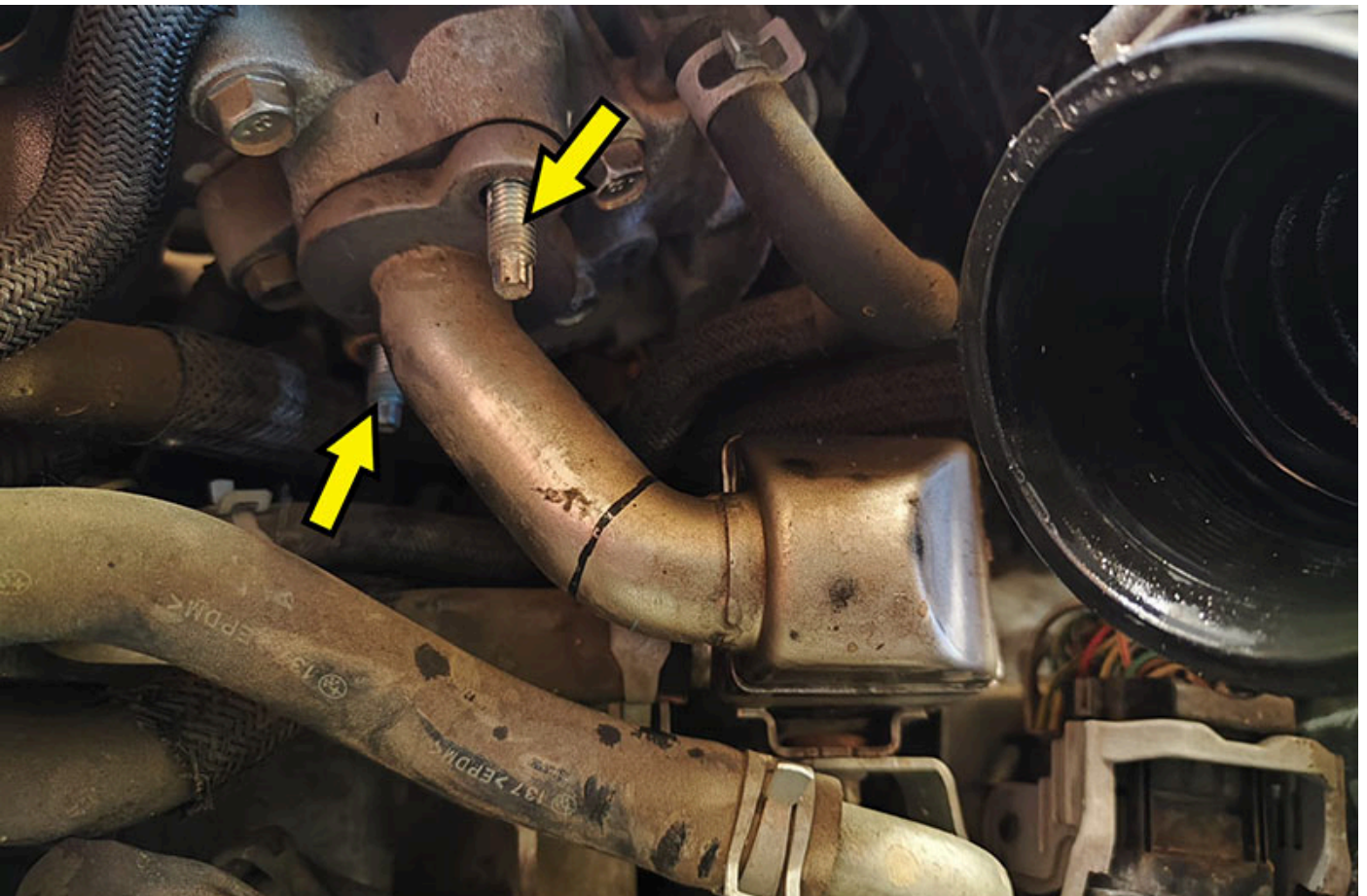
A software update can be carried out, for example, using Hella Gutmann macsRemote Services or by means of a pass-through-compatible diagnostic device taken from the mega macs series. Furthermore, registered access to the vehicle manufacturer's online portal is required. If the appropriate equipment is not available, please contact an authorised specialist workshop.

**IMPORTANT**

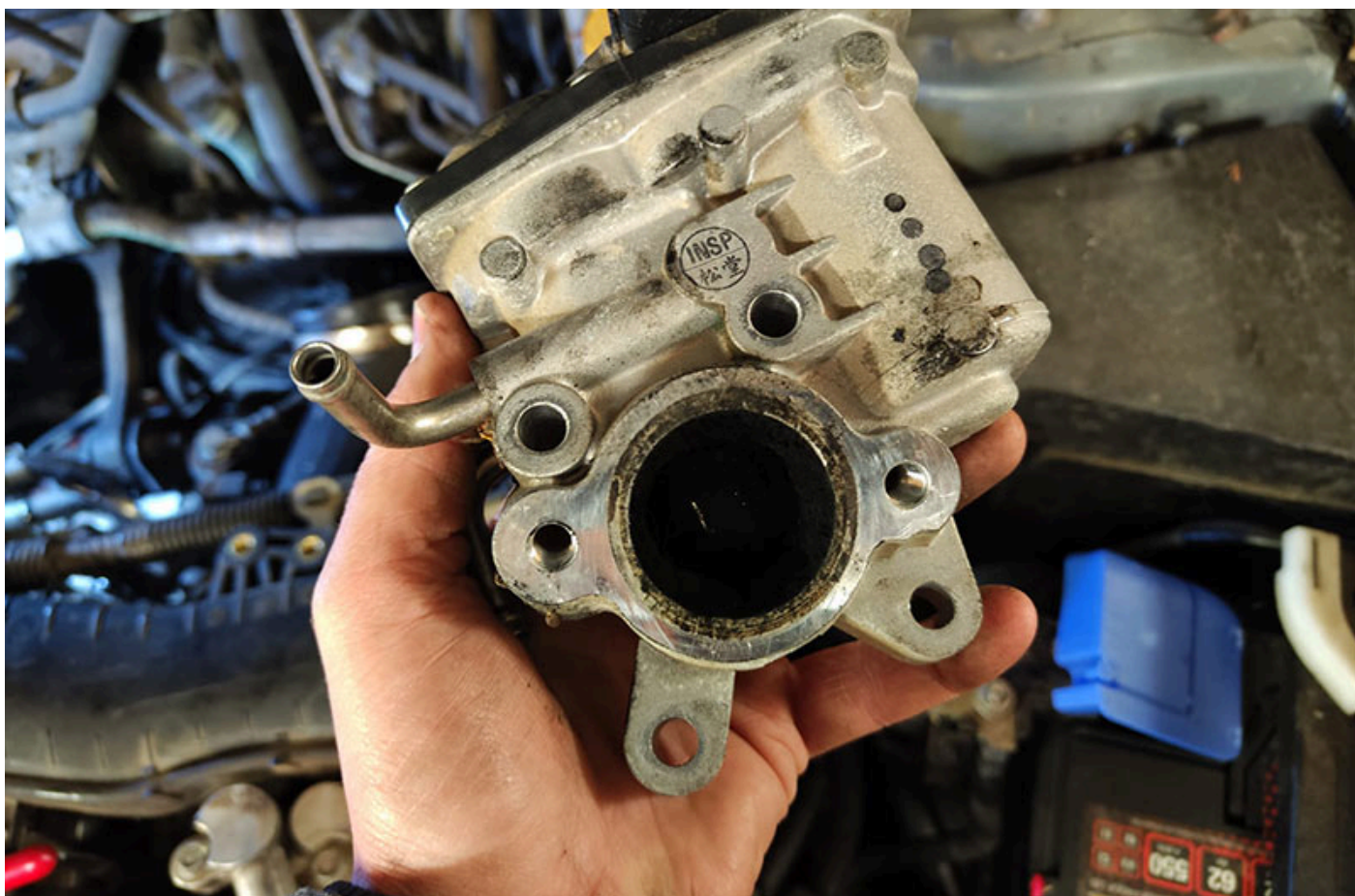
Please always observe in such cases the maintenance and repair notes provided by the vehicle manufacturer.



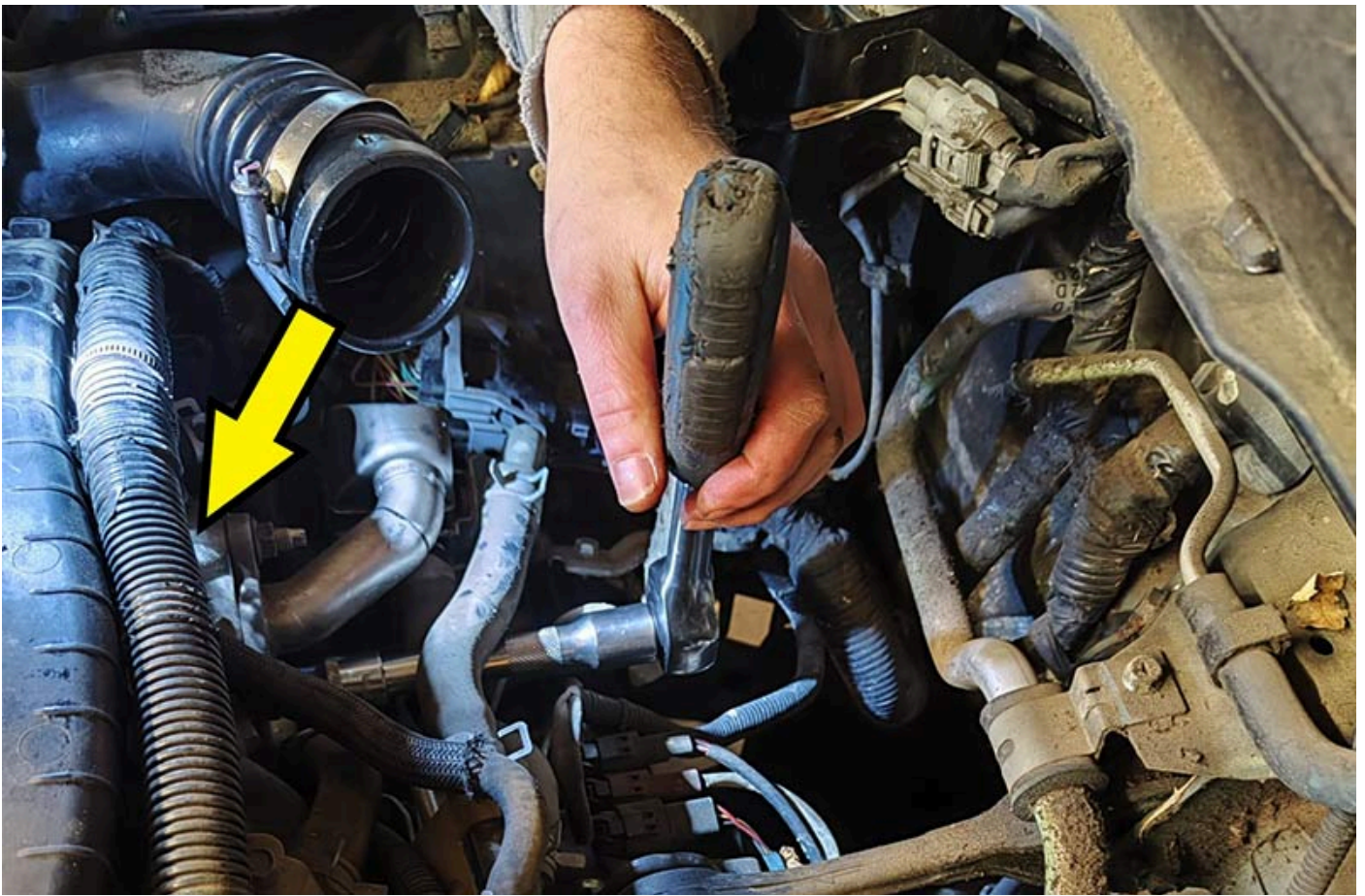
Subaru Forester EGR cooler bottom screw



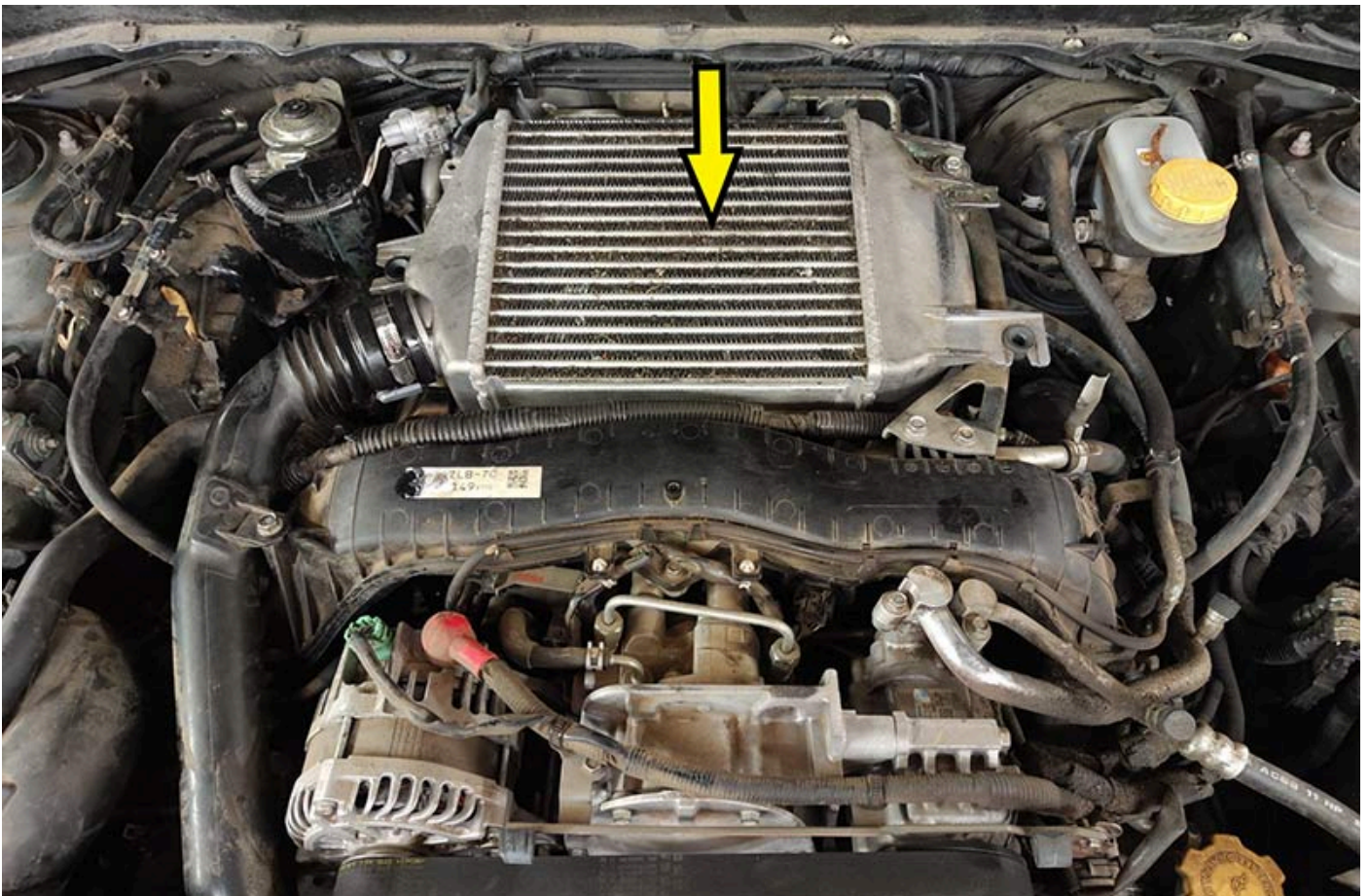
Subaru Forester stud bolts



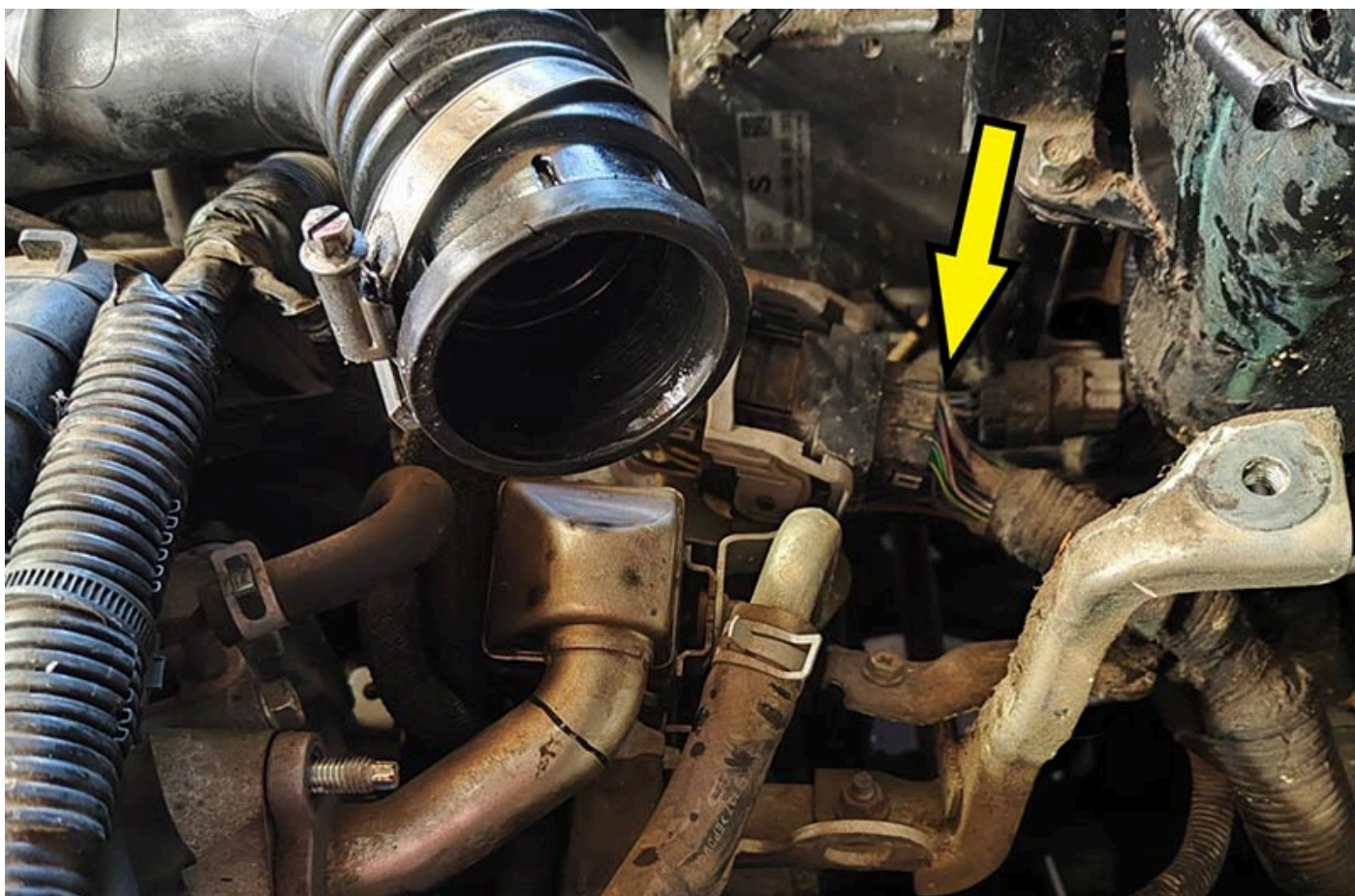
Subaru Forester EGR valve carbonised



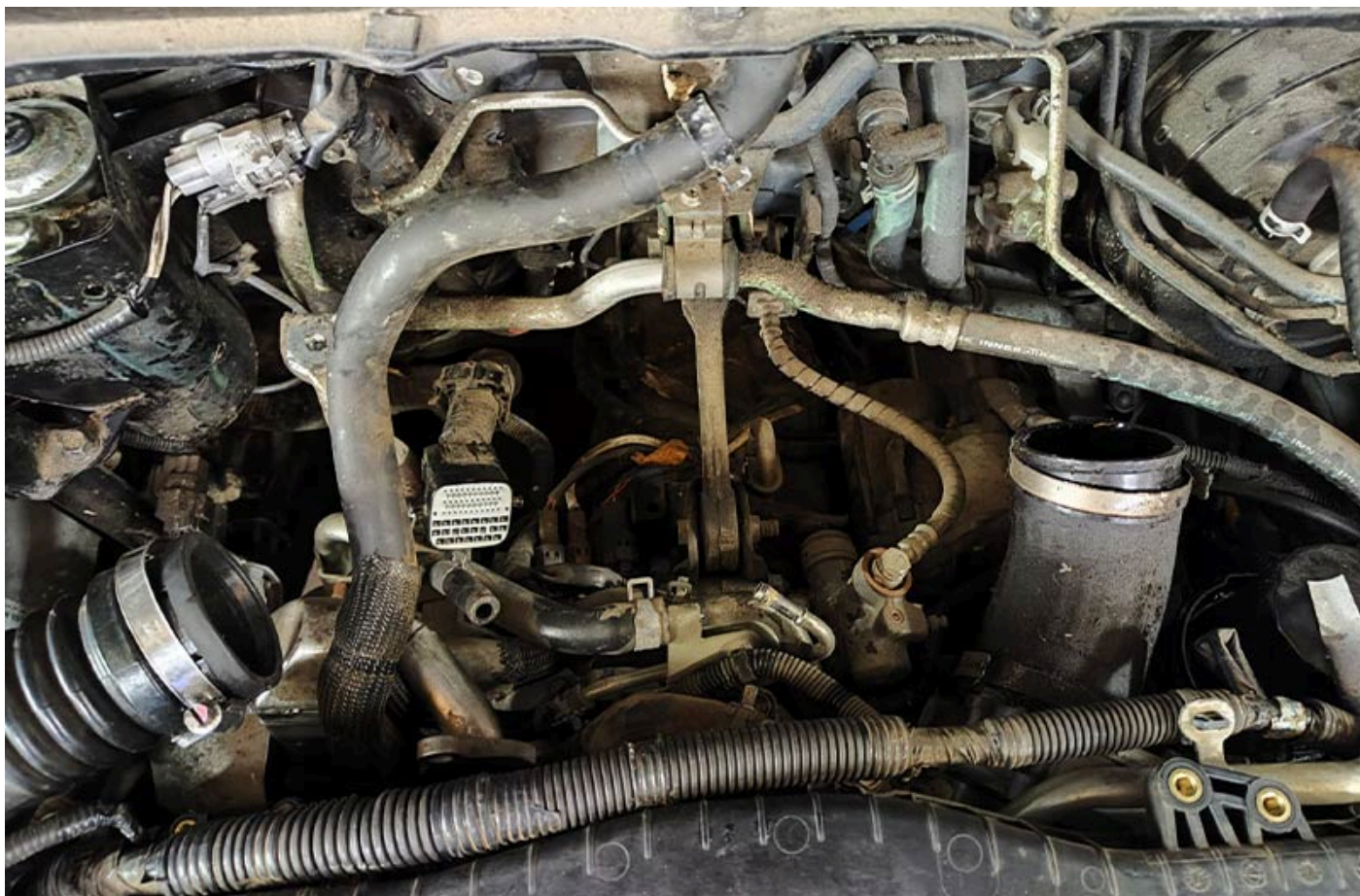
Subaru Forster EGR valve installation position



Subaru Forester charge air cooler



Subaru Forester central connector in engine compartment



Subaru Forester charge air cooler removed

## This may also be of interest to you

Reprinting, distribution, reproduction, exploitation in any form or disclosure of the contents of this document, even in part, is prohibited without our express, written approval; indication of the document source is also required. The schematic illustrations, pictures and descriptions serve only for the purposes of explanation and representation of the instructions and cannot be used as a basis for installation or assembly work. All rights reserved.