

Citroen C3 Pluriel (HB) - Water entering rear combination lamp | HELLA

Citroen

C3 Pluriel (HB)

Water entering rear combination lamp

On the vehicles mentioned above, there is a risk of the rear combination lamp functions failing due to water ingress (Figure 1).

The rear combination lamp must be removed for closer inspection. Remove both screws (Figure 2).

Then unclip the lamp at the side (Figure 3), remove and unscrew the bulb holders. Look out for contamination and corrosion (Figure 4).

In most cases, the water ingress is due to a faulty welding seam on the plastic (above the lamp) (Figure 5).





Figure 1 Figure 2



Figure 3



Figure 4

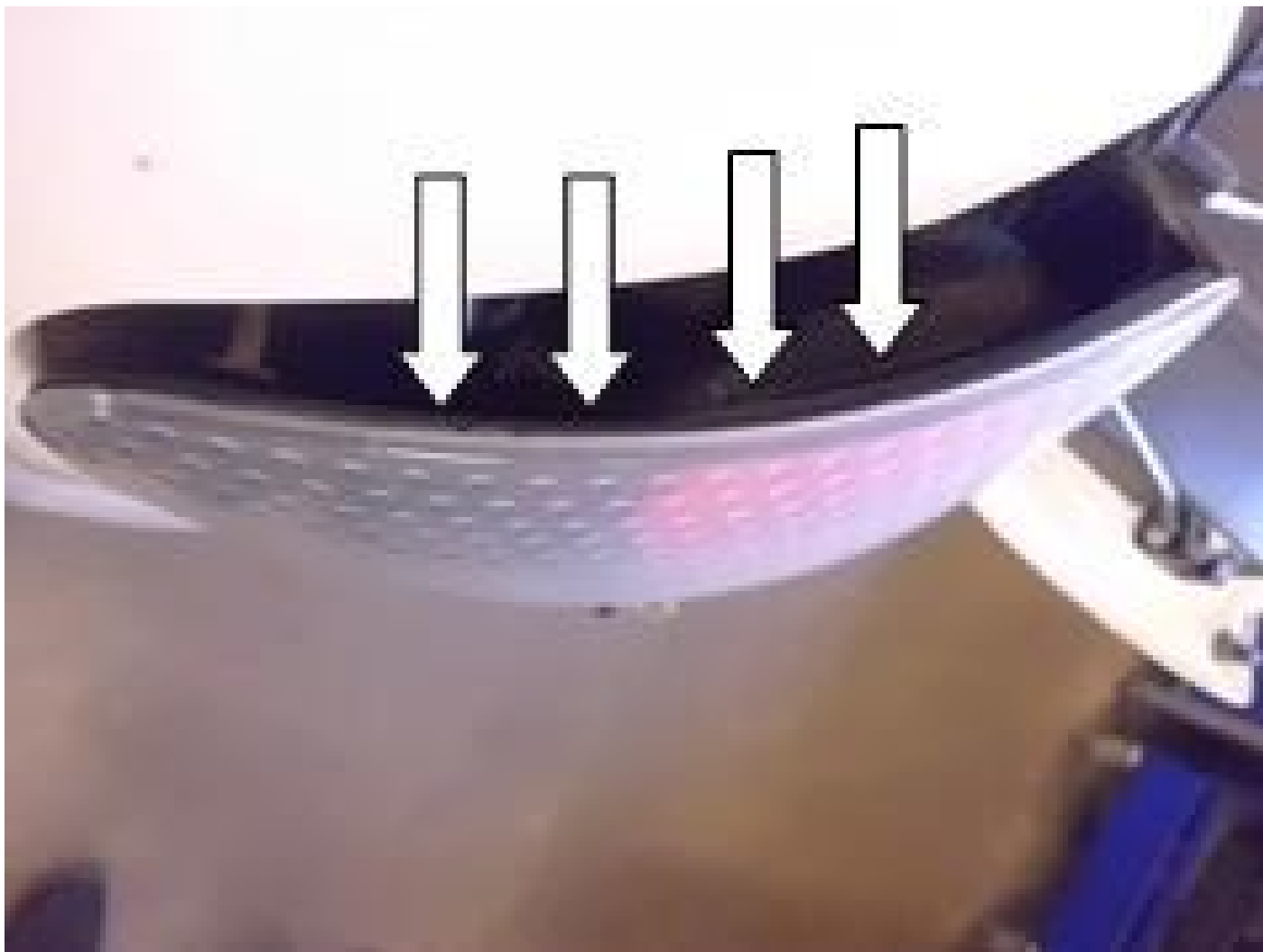


Figure 5

ⓘ Important safety note

The following technical information and tips for practical use have been set up by HELLA in order to offer professional support to automotive workshops in their daily work. The information available here on this website is only to be used by appropriately trained specialist staff.

The reprinting, distribution, reproduction, exploitation in any form and disclosure of the contents of this document, even in part, is prohibited without our express written approval and indication of the source. The schematic illustrations, figures and descriptions are for explanation and presentation of the document text and cannot be used as a basis for installation or design. All rights reserved.