

# Citroen C-Crosser - Engine misfires | HELLA

**Citroen**

**C-Crosser**

**Model year: from 2007**

**All models with engine code 4 HN**

## **Engine misfires**

If a customer complains about the above problem, this could be caused by the injectors. In addition, the following fault codes may be stored:

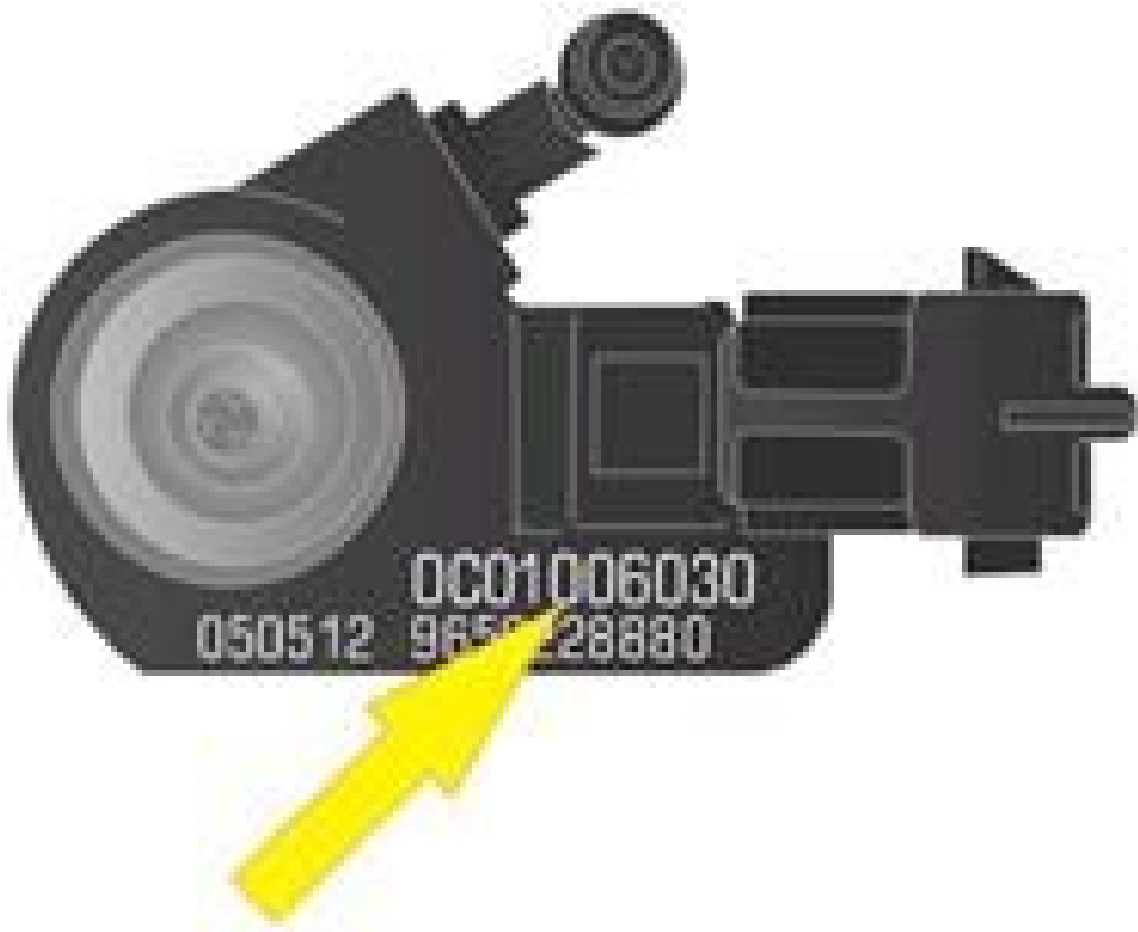
P0201 Injection valve circuit malfunction, cylinder 1

P0202 Injection valve circuit malfunction, cylinder 2

P0203 Injection valve circuit malfunction, cylinder 3

P0204 Injection valve circuit malfunction, cylinder 4

Very irregular engine running and poor starting performance may also be among the complaints. In this case, the injectors should be checked. Use a suitable diagnostic tester, to display the parameters, such as quantity correction comparison, injection timing BTDC, injection duration, and injection quantity. Compare actual against target values. If the measurements reveal unacceptable deviations, the defective injectors must be replaced. As each new injector has its own "classification code" has (see Figure 1), they must be input in the ECU after the injectors have been replaced. This can be done in the 'Injector adjustment' menu. As part of this, the fuel filter and the return lines should also be replaced.



The reprinting, distribution, reproduction, exploitation in any form and disclosure of the contents of this document, even in part, is prohibited without our express written approval and indication of the source. The schematic illustrations, figures and descriptions are for explanation and presentation of the document text and cannot be used as a basis for installation or design. All rights reserved.