



# VW T6 - leakage in the SCR system, AdBlue escaping

Data sheet	
Manufacturer	Volkswagen
Vehicle model	Transporter T6
Engine	1.6 TDI + 2.0 TDI
Year of manufacture	2015 - 2019
Symptoms	SCR system leaking

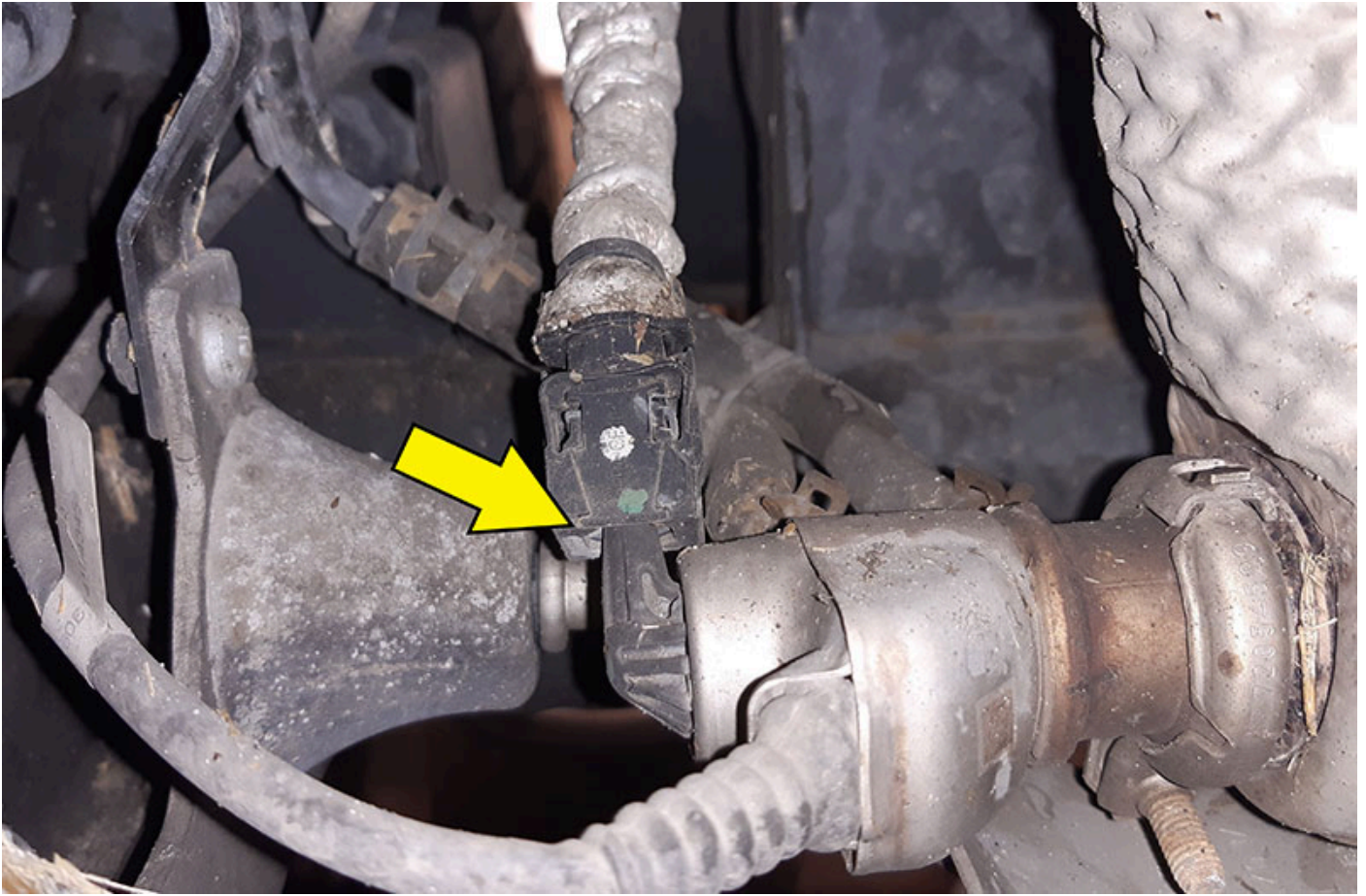
## Important safety note

## AdBlue leaks from the SCR system in a VW Transporter T6

In the case of the above-mentioned vehicle with a selective catalytic reduction (SCR) system, leaks may occur in the area of the SCR components. Special attention must be paid here to the connection between the additive injector and the additive supply line. The additive (AdBlue) can leak out because the supply line does not engage completely with the injector.

In order to remedy this, the additive supply line should be replaced and at the same time the connector of the injector cleaned. Make sure that the pipe completely engages with the injector.

This information may also apply to other vehicle models with the same SCR system.



Reprinting, distribution, reproduction, exploitation in any form or disclosure of the contents of this document, even in part, is prohibited without our express, written approval; indication of the document source is also required. The schematic illustrations, pictures and descriptions serve only for the purposes of explanation and representation of the instructions and cannot be used as a basis for installation or assembly work. All rights reserved.