



# MCC Smart - lamp adjustment

Data sheet

Manufacturer	MCC Smart
Vehicle model	450
Engine	All models
Year of manufacture	1997-2007
Symptoms	Adjusting lamps

## Important safety note

## Adjustment of lamps

In order to be able to adjust lamps, they firstly have to be made accessible. To do this, please proceed as follows:

- Remove the ventilation grille on the left under the windscreen
- First turn the screw in the grille using a suitable tool in order to release the locking mechanism.
- Unclip the ventilation shaft and pull it out upwards
- The two adjusting screws are now visible and can be turned using an Allen key.
- Remove the ventilation grille on the right under the windscreen

First turn the screw in the grille using a suitable tool in order to release the locking mechanism.

The two adjusting screws are now visible and can be turned using an Allen key.

The lamps can now be adjusted using a suitable adjustment device/adjustment station in accordance with the vehicle manufacturer's specifications.



**IMPORTANT**

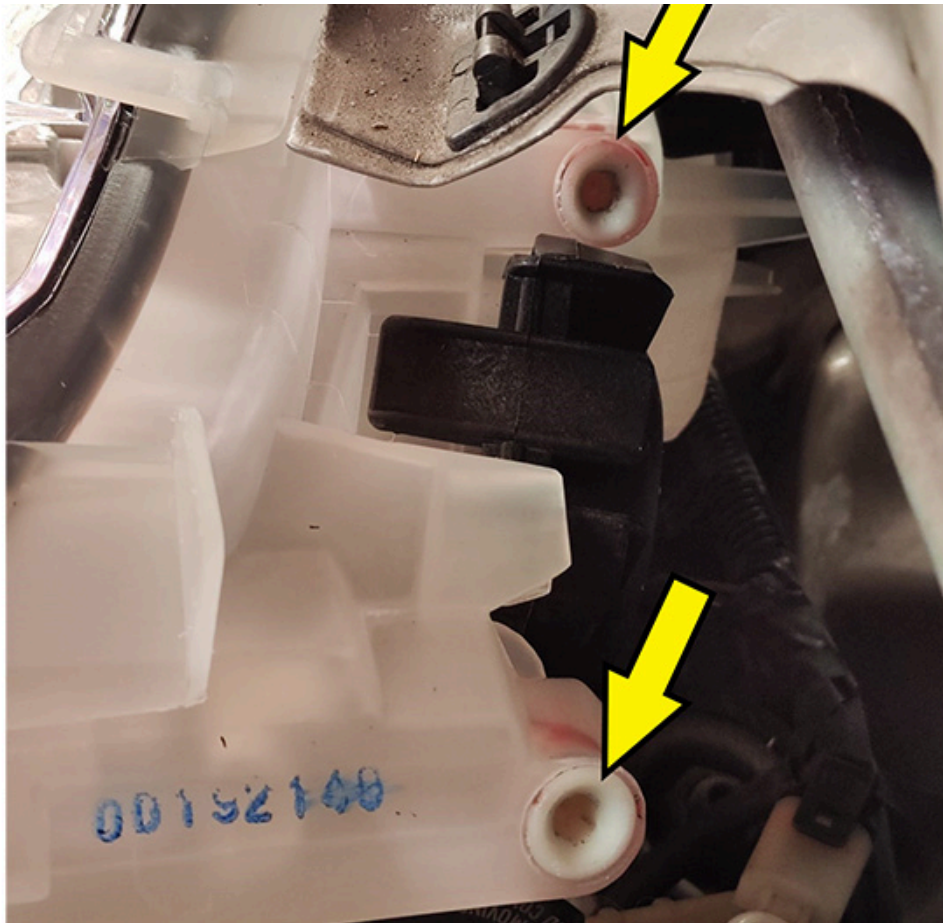
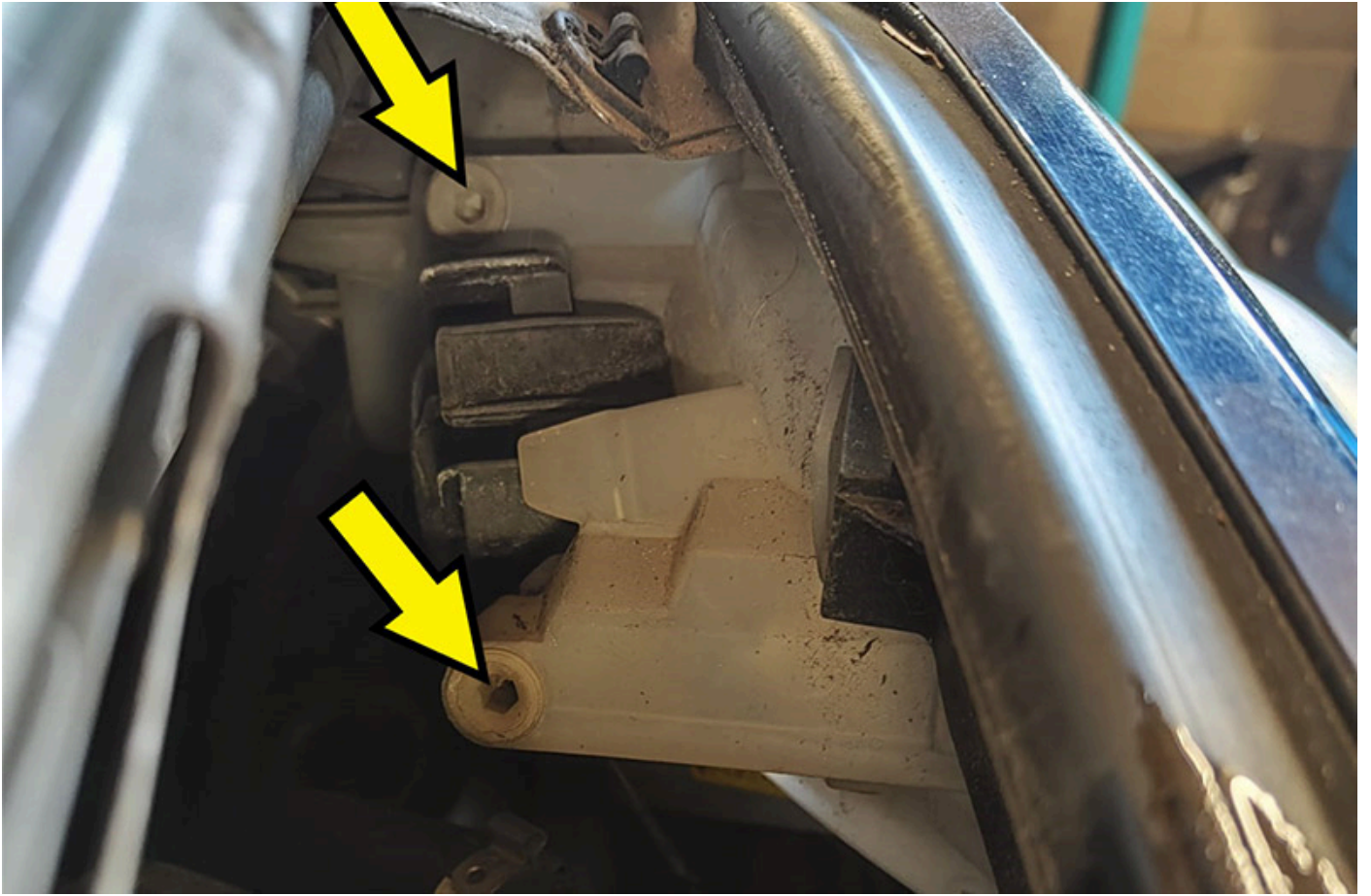
Please always follow the repair instructions from the vehicle manufacturer when carrying out such work.











## **This may also be of interest to you**

Reprinting, distribution, reproduction, exploitation in any form or disclosure of the contents of this document, even in part, is prohibited without our express, written approval; indication of the document source is also required. The schematic illustrations, pictures and descriptions serve only for the purposes of explanation and representation of the instructions and cannot be used as a basis for installation or assembly work. All rights reserved.