



BULB REPLACEMENT



TABLE OF CONTENTS

1 | VEHICLES WITH COMBUSTION ENGINES

Audi A1	5	Ford B-Max	41
Audi A3 2.0 TDI PD	8	Ford Fiesta 1.4i	44
(Year of construction from 2003)		(Year of construction commencing from 11.2001)	
Audi A4 1.9 TDI	11	Ford Focus II 1.6i	48
With xenon light		(Year of construction commencing from 11.2004)	
Audi A4 (8K5/8K2)	15	Ford S-Max	51
With bi-xenon headlamps		Honda Jazz	52
Audi A6 2.4	19	All engines	
Audi A6 (4F) 2.4	22	Land Rover Range Rover Sport	54
(year of construction commencing from 05.2004)		Mercedes-Benz A-Class (W168)	58
BMW 3 series (E91, E92) 330d	27	All engines	
With xenon light		Mini Cooper S	60
BMW 5 series (E60)	30	Opel Corsa D 1,4	62
With xenon light		(year of construction from 2007)	
BMW X3 (E83) 2.0d	35	Opel Signum / Vectra V6 CDTI	67
Diesel		With xenon light	
BMW Z4 (E85) 2.2	37	Opel Zafira II 1.6i	72
Petrol engine, with xenon light		(Year of construction commencing from 07.05)	
Citroën C1, Peugeot 107	39		
All engines			

2 | ELECTRIC AND HYBRID VEHICLES

Renault Espace IV	75	Renault Zoe	102
All engines		Electric vehicles	
Renault Laguna (K74) 2.2 dci	77	(year of construction from 2012)	
Renault Modus	80	Toyota Auris	104
All engines		Hybrid	
Skoda Octavia 2.0 FSI	84	Toyota C-HR	106
With bi-xenon headlamps (year of construction commencing from 01.2009)		VW e-up!	108
Skoda Roomster 1.9 TDI	88	Electric vehicles	
With bi-halogen headlamps (year of construction from 2006 to 2010)		(year of construction from 2013)	
VW Beetle 1.9 TDI PD	92		
VW Passat (B5) 1.9 TDI	95		
VW Polo (9N) 1.4 TDI	97		

REPLACING LIGHT SOURCES DOES NOT HAVE TO BE DIFFICULT

Today's cars are becoming increasingly complex. More and more components have to be included in vehicles. In extreme cases, this often means that there is not a hand's breadth of space between the components in the engine compartment. This is particularly annoying whenever a light source in the headlamp needs to be replaced. Once you have finally found the headlamp cover after some time, it is not uncommon to have to "unscrew" a path towards it. The time required to do this for some vehicles is quite considerable because the entire headlamp has first to be removed in order to gain access to the light source. Painful encounters with sharp edges and unpleasant burrs are also involved in such everyday work.

This manual lists vehicles that require an increased amount of work in this respect. With easy-to-follow work steps and detailed photos, this manual helps to make replacing the light source easier and indeed more efficient. How to make replacing light sources a simple job.

REPAIR TIPS

Bulbs or xenon lamps should only be replaced when the light source has cooled down. A defective bulb may only be replaced by a bulb of the same type. The relevant designation can be found on the lamp base plate. Do not touch the glass surface of the bulb. The maintenance and safety information in the vehicle operating instructions must be observed!

We recommend the following procedure when replacing bulbs: Switch off the lights and ignition; remove the key and keep it in a safe place; secure the vehicle against rolling away and apply the handbrake; have spare bulbs ready to hand.

SYMBOL EXPLANATION



Very high amount of work



High amount of work



Medium amount of effort



Little effort



Very little effort

1

VEHICLES WITH COMBUSTION ENGINES

AUDI A1



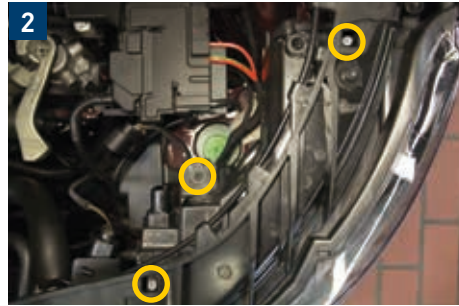
Replacing the light source

In order to replace the light sources in this kind of vehicle, you must follow the additional repair instructions found on page 3.



1
High beam
(driver side / passenger side)

→ The light source can be replaced without any problems.

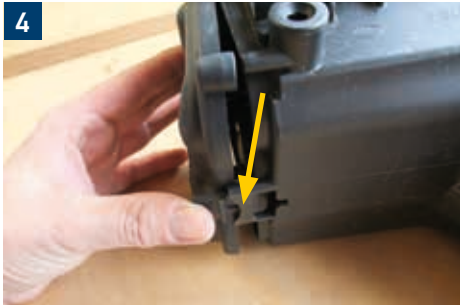


2
Low beam, position light, daytime running light and direction indicator light
(driver side / passenger side)

→ Remove the headlamp. To do this, first disconnect the plug connection on the headlamp using a screwdriver [Fig. 1].
→ Loosen the fastening screws (2 x Torx 25; 1 x Torx 30) [Fig. 2].

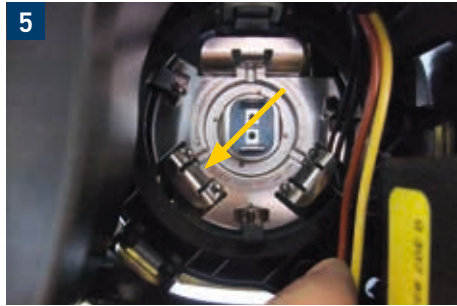


3
→ Carefully slide the headlamp forwards out of the guides and remove it from the body.



4
Low beam, position light, daytime running light and direction indicator light
(driver side / passenger side)

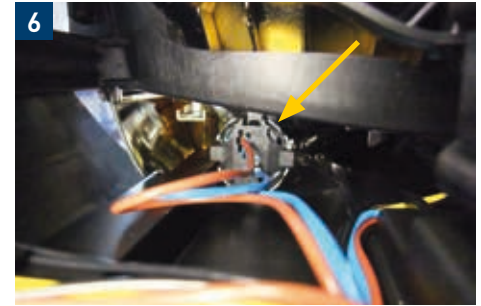
→ Press the locking mechanism of the cover cap to the left until it releases. Remove the cover cap from the housing.



5
Low beam
(driver side / passenger side)

→ Remove the contact plug/connector from the H7 bulb. Press one of the lower retaining clips slightly outwards and remove the bulb backwards from the reflector.

→ **Caution!** The clamping position is very tight. The bulb must not be pulled or levered too vigorously because the reflector bracket or the bulb holder could in this way be damaged as a result of the high force involved.

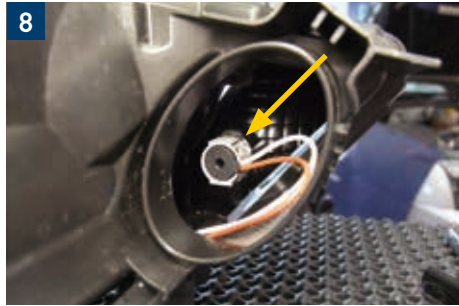


→ When fitting the new lamp, make sure that the bulb base lies flat against the lamp/bulb holder.



7
Position light / daytime running light
(driver side / passenger side)

- Remove the rubber cap from the housing.
- Because the light source is installed very deep in the headlamp, the lamp base plate should be carefully pulled backwards out of the reflector using needle-nose pliers. It cannot be reached just by using your fingers [Fig. 6 and 7].



8
Direction indicator light
(driver side / passenger side)

- Remove the rubber cap from the housing.
- Carefully pull the lamp base plate with the light source backwards out of the reflector.



- **Caution!** When mounting the headlamp in the body, it is important to pay attention to the guides.

Reinstall all the dismantled parts in reverse order.
Check functioning of the lighting system. Check headlamp adjustment and correct if necessary.

AUDI A3 2.0 TDI PD

(YEAR OF CONSTRUCTION FROM 2003)

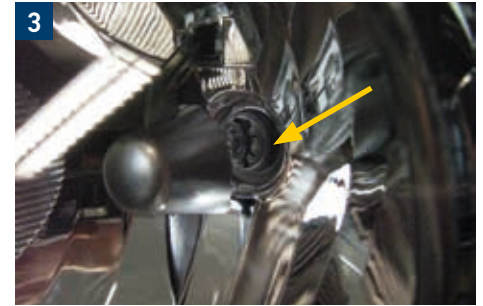
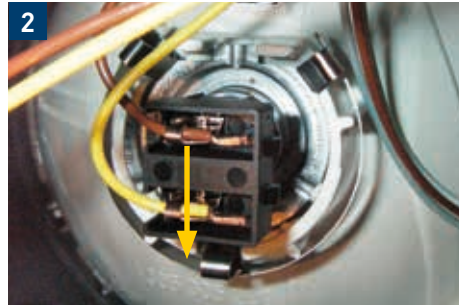


Replacing the light source

To replace the light sources in this type of vehicle, you must follow the additional repair instructions found on page 3. As the work steps for both sides of this vehicle are identical, the procedure for just the one side is described as an example.



1
Low beam



→ Press the release lever of the cover cap downwards and remove the cap from the rear headlamp housing.

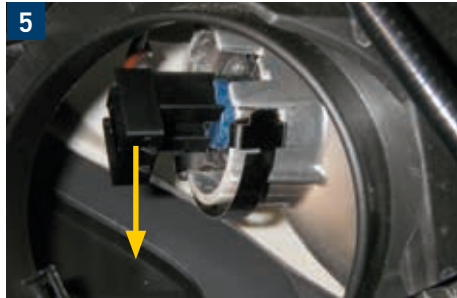
→ Press the lamp connector slightly downwards out of the holder and remove it from the headlamp together with the lamp.
→ Remove the lamp from the connector and replace it.

→ When installing the bulb, it is important to ensure that the lamp is positioned correctly. The lamp must be pressed home into the holder as far as it will go. In order to obtain better orientation, we recommend looking through the headlamp lens.



High beam

- Release the fastening bracket from the cover cap and remove the cap from the rear headlamp housing.



- Press the lamp connector slightly downwards out of the holder and remove it from the headlamp together with the lamp.
- Remove the lamp from the connector and replace it.



Parking light

- To access the lamp for the parking light, the cover cap and the high beam lamp, as already described for the high beam, must both be removed.
- Use needle-nose pliers to pull the lamp holder with its bulb out of the reflector and remove it from the headlamp.
- Replace lamp.



Direction indicator light

- Unscrew the front screws (Torx 20) of the upper wheel well trim.
- Push the trim enough to the side so that the lamp can be accessed.
- Turn the bulb base plate to the left as far as it will go and remove it from the housing together with the lamp.
- Replace lamp.

Reinstall all the dismantled parts in reverse order. Check functioning of the lighting system. Check headlamp adjustment and correct if necessary.

AUDI A4 1.9 TDI WITH XENON LIGHT



Replacing the light source

In order to replace the light sources in this kind of vehicle, you must follow the additional repair instructions found on page 3.



1
Position light and high beam
(driver side)

→ The light sources can be replaced without any problems.

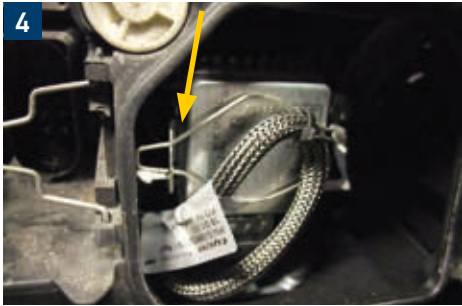


2
Low beam
(driver side)

→ Remove the headlamp. To do this, unscrew the upper screws (Torx 30) [Fig. 1].



- 3**
- Only loosen the two lower screws [Fig. 2 and 3].
 - Disconnect the plug connection from the headlamp and move the headlamp forwards to take it out of the body.
 - Unlock the fastening bracket of the cover cap and remove the cap from the headlamp housing.



4
Low beam
(driver side)

→ Unlock the spring wire clip for locking the ignition module.

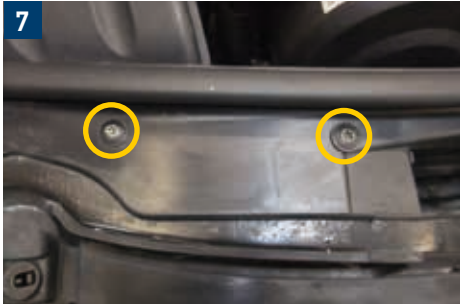


5
→ Carefully pull the ignition module with xenon lamp (one unit) backwards out of the reflector.
→ Disconnect the power supply cable from the ignition module.

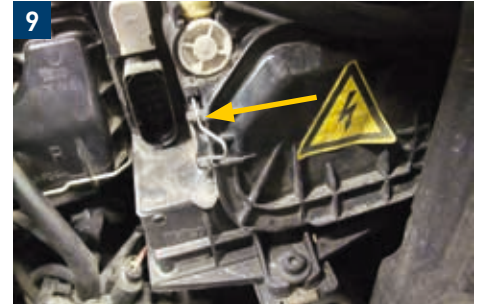


6
Direction indicator light
(driver side)

→ Remove headlamp, see low beam.
→ Turn the bayonet base plate to the left and remove it with the bulb from the reflector.



7
Low beam
(passenger side)



→ Unscrew the screws from the air intake duct (Torx 25) and remove the two-piece intake duct.

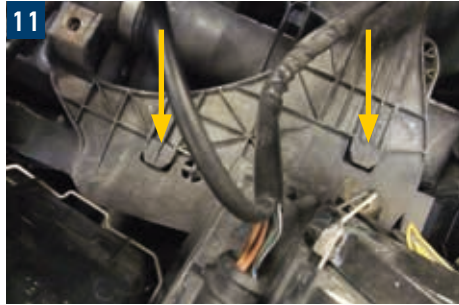
→ Remove the air filter box. To do this, remove the fastening plug.
→ Disconnect the plug connection from the air mass sensor.
→ Loosen the hose clamp from the intake air hose and pull the hose away from the air filter.
→ Move the air filter box upwards out of the rubber guides.

→ Disconnect the plug connection from the headlamp and lay the cable to one side so that it no longer gets in the way when the cover cap is removed.
→ Unlock the fastening bracket of the cover cap and remove the cap from the headlamp housing.
→ For all further work steps, see point 6.



10
High beam and position light
(passenger side)

- Unscrew the screws from the air intake duct (Torx 25) and remove the two-part intake duct [Fig. 7].
- Unlock the fastening bracket of the cover cap and remove the cap from the headlamp housing [Fig. 10]. The light sources can now be replaced.



11
Direction indicator light
(passenger side)

- See driver side.
- **Caution!** When refitting the headlamp, it is important to ensure that it is correctly reinserted in the guides.

Reinstall all the dismantled parts in reverse order. Check functioning of the lighting system. Check headlamp adjustment and correct if necessary.

AUDI A4 (8K5 / 8K2)

WITH BI-XENON HEADLAMPS



Replacing the light source

In order to replace the light sources in this kind of vehicle, you must follow the additional repair instructions found on page 3.



1
Low beam, high beam, daytime running light, position light and direction indicator light
(driver side / passenger side)



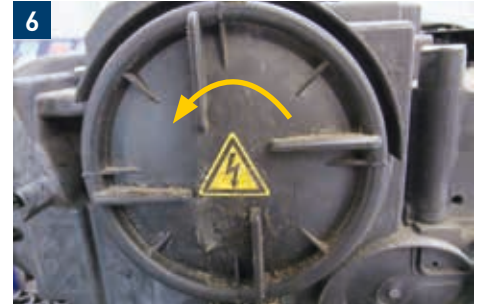
- 2**
- Unscrew the screws (4 x Torx 30) from the trim and pull this type of panelling upwards.
 - **Caution!** Take care not to damage the locking tabs.



- 3**
- Loosen the fastening screws (4 x Torx 30) from the headlamp. Two screws are located at the top [Fig. 3] and two at the bottom [Fig. 4 and 5] of the headlamp.
 - Move the headlamp forwards out of the body.



4
Low beam, high beam, daytime running light, position light and direction indicator light
(driver side / passenger side)



6
Low beam and high beam
(driver side / passenger side)

→ Turn the cover cap to the left and remove it from the headlamp housing.



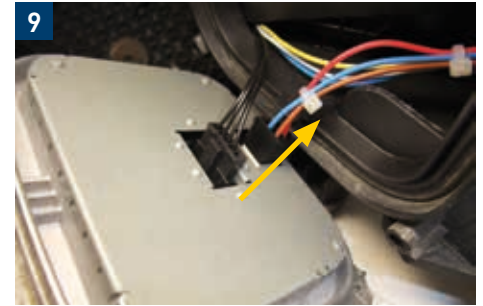
7
Low beam and high beam
(driver side / passenger side)

- Turn the ignition module to the left and then carefully remove the ignition module with the xenon lamp (one unit) from the reflector.
- Release lock on the plug connection and then disconnect cable from the ignition module.



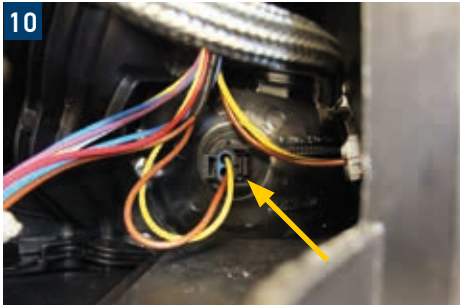
8
Direction indicator light
(driver side / passenger side)

- Unscrew the screws (4 x Torx 20) from the ballast and remove this from the headlamp housing.



- Disconnect the plug connections on the ballast.

10



Direction indicator light
(driver side / passenger side)

→ The lamp holder sits very deep in the headlamp and cannot be reached simply by using your fingers. Therefore it is necessary to use a suitable tool, e.g. needle-nose pliers, to carefully twist the lamp base plate to the left and remove it from the reflector together with the bulb.

Daytime running light and position light
(driver side / passenger side)

→ These two light functions are generated with LEDs. The LEDs are not replaceable.

Reinstall all the dismantled parts in reverse order. Check functioning of the lighting system. Check headlamp adjustment and correct if necessary.

AUDI A6 2.4

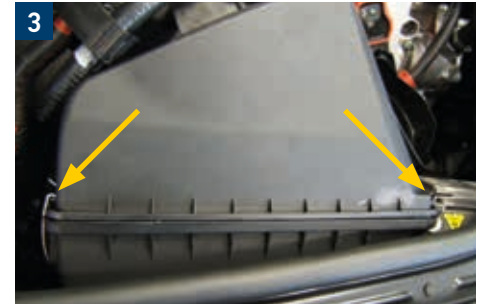
WITH XENON LIGHT (YEAR OF CONSTRUCTION COMMENCING FROM 05.2004)

Replacing the light source

In order to replace the light sources in this kind of vehicle, you must follow the additional repair instructions found on page 3.



1
Low beam
(passenger side)



- Remove the screws from the intake duct (to the air filter) on the front cross member.
- Remove the intake duct from the air filter box.

- Remove the engine cover in an upward direction.
- Remove the hose brackets from the air filter box.
- Loosen the hose clamp of the intake hose on the intake manifold and the two retaining clips on the air filter box. Remove the intake hose.

- Release the retaining clips on the air filter box.
- Remove the front housing section with air filter.



4
Low beam
(passenger side)

→ Pull out the rubber pin in the lower part of the air filter box in an upward direction.



→ Pull the rear part of the housing facing the engine away from the bracket and move it away from the inner wall until the headlamp housing cover can be easily reached.
→ Release the locking tabs and remove the housing cover.



→ Push the safety bracket for the supply cable backwards.



7
Low beam
 (passenger side)

- Turn ignition module to the left. The cable connector is automatically pushed out of the module.
- Remove ignition module from the xenon lamp.
- Press the spring wire clip together and fold it back.
- Replace xenon lamp.



8
Low beam
 (driver side)

- Unscrew the fastening screw from the power steering oil reservoir.
- Remove the container from the bracket.
- Remove the headlamp housing cover and replace the lamp as described for the passenger side.

Parking light, direction indicator light and high beam
 (driver side / passenger side)

- "Uncover and free up" the headlamp as described above.
- The bulb in question can then be replaced.

Reinstall all the dismantled parts in reverse order. Check functioning of the lighting system. Check headlamp setting and correct if necessary using a diagnostic tester (read out error code, basic setting of headlamp levelling etc.).

AUDI A6 (4F) 2.4

(YEAR OF CONSTRUCTION
COMMENCING FROM 05.2004)

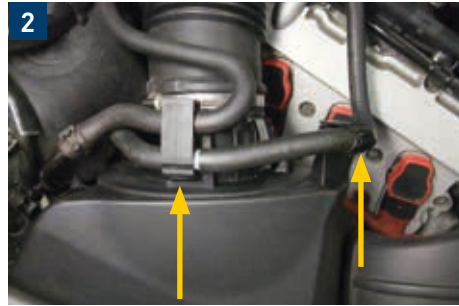


Replacing the light source

In order to replace the light sources in this kind of vehicle, you must follow the additional repair instructions found on page 3.



1
Low beam, high beam, position light and direction indicator light
(passenger side)



→ Unscrew the fastening screws from the intake duct.

→ Remove the intake duct from the air filter box.

→ Release the fastening clips on both sides of the air filter housing and remove the front housing section together with the air filter.

→ Remove the hose brackets from the air filter housing.

→ Loosen the hose clamp from the intake air hose and pull the hose away from the air filter box.



4
Low beam, high beam, position light and direction indicator light
(passenger side)

→ Pull the expansion link out of the fastening plug.
Then remove the rear housing section facing the engine from the mudguard wall.



5
→ Unlock nozzle connector from the air hose and remove it from the air filter housing.

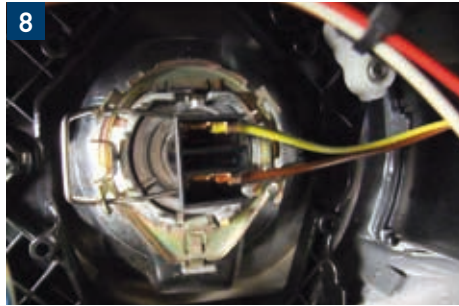


6
→ Pull out the rubber pin in the lower part of the housing in an upward direction.
→ Then pull the housing upwards out of the guides.



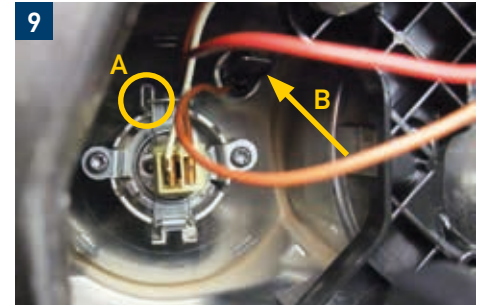
7
Low beam, high beam, position light and direction indicator light
(passenger side)

- Loosen the locking tabs on the cover cap and remove the cap from the housing.
- **Caution!** Because of the restricted view of the light sources, we recommend using a mirror to prevent any damage being caused and to avoid any incorrect installation work.



8
Low beam
(passenger side)

- Disconnect the contact plug or connector, release the spring wire clip and remove the bulb from the reflector.



9
High beam
(passenger side)

- Disconnect the contact plug or connector, release the spring wire clip and remove the bulb from the reflector [shown by point A].

Position light
(passenger side)

- Carefully pull the base plate handle backwards out of the reflector [shown by point B].



10
Direction indicator light
(passenger side)

→ Turn the base plate handle to the left and remove it with the bulb from the reflector.



11
Low beam
(driver side)

→ Unscrew the fastening screw (Torx 30) from the power steering storage reservoir.
→ Bend open the metal strip until the oil container can be placed to one side.



12
→ There is now enough space for the bulb to be replaced.

Direction indicator light

(driver side)

→ You can still just reach the base plate handle with your left hand. See passenger side info for replacement [Fig. 10 on page 25].

High beam and position light

(driver side)

→ Because of the low installation position of the bulbs, they cannot be reached by hand. It is therefore necessary to dismantle the headlamp in order to carry out a professional replacement job.

Reinstall all the dismantled parts in reverse order. Check functioning of the lighting system. Check headlamp adjustment and correct if necessary.

BMW 3 SERIES (E91, E92) 330D

WITH XENON LIGHT

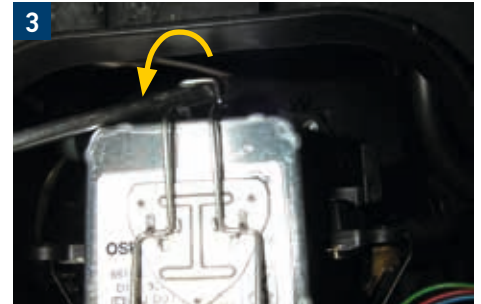


Replacing the light source

In order to replace the light sources in this kind of vehicle, you must follow the additional repair instructions found on page 3.



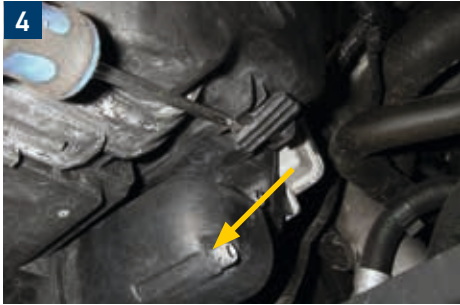
1
Low beam and high beam
(driver side / passenger side)



- Remove the complete inner panelling of the mudguard (6 screws with 8 SW). To make removal easier, jack up the vehicle and, if necessary, unscrew the relevant wheel.
- Release the upper locking mechanism by hand and the lower locking mechanism of the cover cap using a screwdriver and remove the cap backwards.

- Pull the connector from the ignition module downwards.

- Use a screwdriver to pull the fastening clip backwards from the ignition module.
- Remove the ignition module backwards out of the reflector.
- Pull the high beam lamp with connector backwards out of the reflector.



Position light

→ Use a screwdriver to loosen the cover cap and remove it backwards.



→ Unscrew both screws (Torx 20) and remove the small reflector completely backwards [Fig. 5 and 6].



→ Disconnect the connector from the lamp. The lamp and reflector form a single unit and are only replaced in their entirety. This component in its original form can currently only be obtained from BMW.



Direction indicator light

- The lamp for the direction indicator light can be replaced via a cover cap in the mudguard panelling. Jack up the vehicle for better accessibility.
- Turn the bayonet closures to the left and then release them.

- Remove the cover from the mudguard.
- Turn the lamp holder to the left and remove it together with the lamp from the reflector.

Reinstall all the dismantled parts in reverse order. Check functioning of the lighting system. Check headlamp adjustment and correct if necessary.

BMW 5 SERIES (E60)

WITH XENON LIGHT

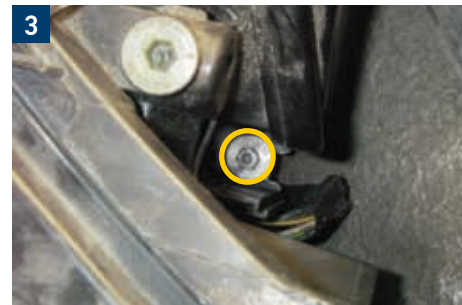


Replacing the light source

In order to replace the light sources in this kind of vehicle, you must follow the additional repair instructions found on page 3. As the work steps for both sides of this vehicle are identical, the procedure for just the one side is described as an example.



1
Low beam



- Pull the plastic strip between the headlamps upwards. This strip sits quite firmly in its groove. A screwdriver should therefore be used, if necessary, when loosening it.
- Unscrew the Torx screws located underneath.

- Loosen the lower fastening screws from the headlamp, but do not unscrew them completely [Fig. 2 and 3].



Low beam

- Unscrew the upper fastening screws.
- Pull the plastic cover between the headlamps slightly forwards and remove the headlamp from the body, ensuring that you handle this delicately.



- Loosen the plug connections. For the "large" plug connection, slide the locking bracket to the left in order to release the plug connection.
- Remove the large cover cap from the headlamp housing.



- Release the safety bracket on the ignition module.



7
Low beam

- Then turn the ignition module to the left as far as it will go and remove it from the xenon lamp. The contact connector is automatically pushed out of the ignition module during this rotation.
- Release the safety clip on the xenon lamp and then replace the lamp.



8
High beam and parking light

- Dismantle the headlamp as previously described.
- Remove the round cover cap.
- Turn the handle on the lamp base plate to the left and remove it together with the lamp from the headlamp.



9

- Use a screwdriver to push the fastening bracket outwards so that it fits over the locking tab.
- Replace bulb.



10
High beam and parking light

→ Turn the reflector of the parking light to the left.



→ Pull the reflector slightly backwards through the large opening and then remove it upwards out of the round opening.



12
Side marker light and direction indicator light

→ The headlamp does not need to be removed when these bulbs are being replaced.
→ Turn the base plate handle of the bulb for the direction indicator light to the left as far as it will go and then remove it.

13



Side marker light and direction indicator light

→ Undo the plug connection on top of the headlamp and remove it with the lamp.

Reinstall all the dismantled parts in reverse order. Check functioning of the lighting system. Check headlamp setting and correct if necessary using a diagnostic tester (read out error code, basic setting of headlamp levelling etc.).

BMW X3 (E83) 2.0D

DIESEL



Replacing the light source

In order to replace the light sources in this kind of vehicle, you must follow the additional repair instructions found on page 3.



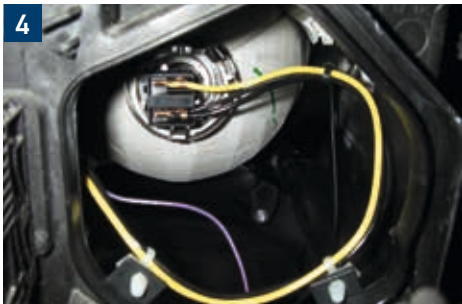
1
Low beam, high beam and position light
(passenger side)



- Remove the washer fluid reservoir upwards out of its bracket mounting and place it a little further back.
- There are 2 cover caps on the rear of the headlamp housing. The outer cap is for the low beam, the inner cap for the high beam and position light.



- Use a screwdriver to press "the locking tab" of the appropriate cap upwards and pull the cap backwards [Fig. 3].
- Pull the bulb with its connector out of the reflector backwards [Fig. 4 on page 36].
- Remove the bulb from the connector and replace it.



Low beam, high beam and position light
(driver side)

→ The replacement is identical, except that no water tank etc. has to be removed.

Direction indicator light

- However, the washer water tank must also be removed here.
- Press down "the locking tab" on the cap and pull the cap backwards.
- Turn the bayonet base plate to the left and remove it from the reflector.
- Replace lamp.

Reinstall all the dismantled parts in reverse order. Check functioning of the lighting system. Check headlamp adjustment and correct if necessary.

BMW Z4 (E85) 2.2

PETROL ENGINE, WITH
XENON LIGHT



Replacing the light source

In order to replace the light sources in this kind of vehicle, you must follow the additional repair instructions found on page 3.



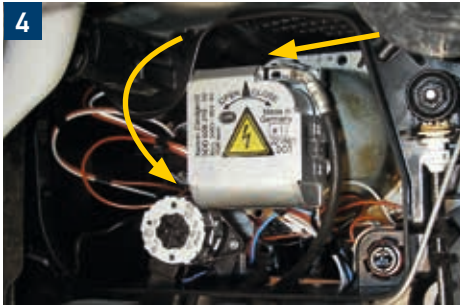
1
Low beam, high beam and position light
(driver side / passenger side)



- Replacement is carried out via a flap on the inside of the mudguard [Fig. 1]. To improve accessibility, jack up the car and unscrew the wheel if necessary.
- Turn the bayonet closures to the left and release them [Fig. 2].
- Remove the cover from the mudguard.

- First pull the metal clamping bracket slightly forwards out of its mount and then fold it upwards [Fig. 3].
- Fold the cover cap backwards and remove it from the guides.
- Turn the ignition module to the left. The connector for the supply voltage is automatically pressed out of the ignition module following this action [Fig. 4 on page 38].

- **Caution!** It is important to follow the correct sequence during subsequent assembly. First remount the module and then press the connector into the module. See also the TI sheet entitled "Replacing the xenon burner/bulb in 4th generation ballasts".



4
Low beam, high beam and position light
 (driver side / passenger side)

- Remove the ignition module from the xenon burner. Disengage the spring wire clip and replace the burner.
- Turn the handle of the base plate for the high beam lamp to the left and remove it together with the lamp from the reflector.
- Pull the handle of the base plate for the position lamp under the high beam lamp backwards out of the reflector.



5
Direction indicator light

- Pull the handle of the base plate for the lamp of the direction indicator light backwards out of the reflector. This is located on the right in the headlamp.

Reinstall all the dismantled parts in reverse order. Check functioning of the lighting system. Check headlamp adjustment and correct if necessary.

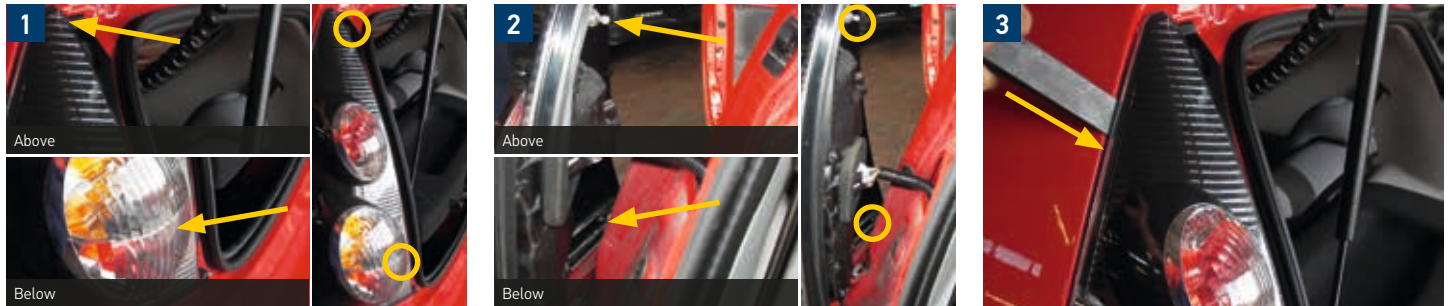
CITROËN C1, PEUGEOT 107

ALL ENGINES



Replacing the light source

In order to replace the light sources in this kind of vehicle, you must follow the additional repair instructions found on page 3.



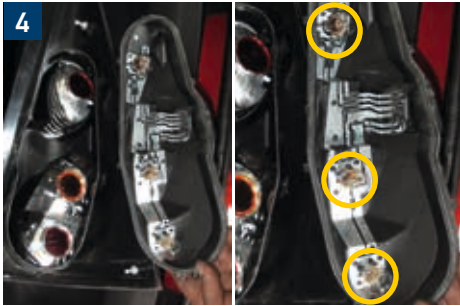
Position light, stop light, direction indicator light, fog light and reverse light
(Rear lamp)

→ Unscrew the fastening screws at the top and bottom of the rear lamp (10 SW).

→ The lamp is fastened to the body at two points with ball head fittings.

→ **Caution!** Do not use a screwdriver for this. If the pressure surface or contact surface is too minimal, there is a risk of parts breaking out of the lamp.

→ Carefully press a rubber wedge between the body and the lamp until the ball head fittings are released out of the brackets.



Position light, stop light, direction indicator light, fog light and reverse light
(Rear lamp)

- Unlock and remove the contact connector.
- Unlock the latching mechanism from the cover cap and remove the cap from the lamp.
- Replace the appropriate lamp in the lamp holder.

Reinstall all the dismantled parts in reverse order.
Check functioning of the lighting system. Check headlamp adjustment and correct if necessary.

FORD B-MAX

DIESEL (YEAR OF CONSTRUCTION
FROM 2012 TO 2015)



Replacing the light source

In order to replace the light sources in this kind of vehicle, you must follow the additional repair instructions found on page 3.



1
Low beam



- The headlamp has to be removed in order to replace the bulbs.
- To do this, open the bonnet and secure it firmly. Undo and remove the screws [shown at points A] on the headlamp. Lift the headlamp just slightly and release it from its mounting bracket. Pull the headlamp to the centre of the vehicle and lift it up. Disconnect the electrical plug connections [point B]. Remove the headlamp from the vehicle.

- Disconnect the two-pole electrical connector.
- First press the safety clip on the left-hand side slightly forwards and then downwards. Finally fold the bracket out to the right.

- Remove the bulb from the base plate [Fig. 2].
- Insert new bulb, fasten safety clip.
- Plug in the connector.
- **Caution!** When installing the new bulb, it is important to make sure that the bulb is correctly seated in the lamp holder.



High beam

- The headlamp has to be removed in order to replace the bulbs. For removal, see low beam [Fig. 1 on page 41].
- Disconnect the one-pole electrical connector.
- Unhook the safety clip on the left and right side.

- Remove the bulb from the base plate [Fig. 3].
- Insert new bulb, fasten safety clip.
- Plug in the connector.
- **Caution!** When installing the new bulb, it is important to make sure that the bulb is correctly seated in the lamp holder.



Direction indicator light (front)

- Turn the lamp holder together with bulb a quarter turn to the left and remove it from the headlamp.
- Press the bulb slightly downwards, turn it to the left and remove it from the lamp holder.

Direction indicator light (front)

- Insert the new bulb into the holder, press down lightly and turn to the right [Fig. 4 on page 42].
- Replace the lamp holder.

Reinstall all the dismantled parts in reverse order.
Check functioning of the lighting system. Check headlamp adjustment and correct if necessary.

FORD FIESTA 1.4i

(YEAR OF CONSTRUCTION
COMMENCING FROM 11.2001)



Replacing the light source

In order to replace the light sources in this kind of vehicle, you must follow the additional repair instructions found on page 3.

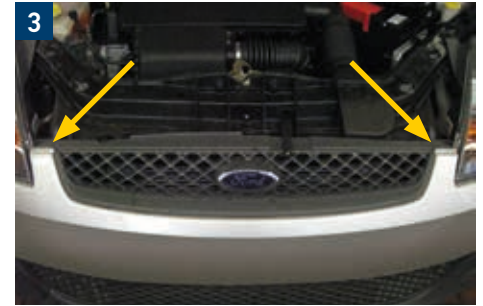


1
Low beam and high beam
(driver side)

→ Remove the rubber cap from the headlamp housing.



2
→ Loosen the spring wire bracket and replace the H4 bulb.



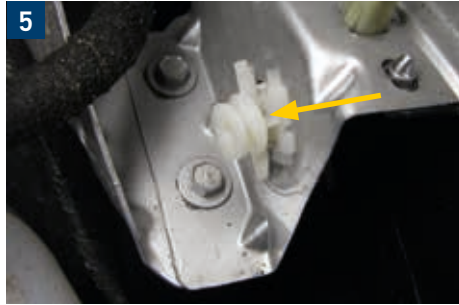
3
Parking light and direction indicator light
(driver side / passenger side)

→ Release the radiator grille fastening (there are notches or grooves on the right and left) and then pull it upwards.



Parking light and direction indicator light
(driver side / passenger side)

→ Unscrew the fastening screws (Torx 30) from the headlamp.



→ The headlamp now has to be pulled forwards with a quick tug from an extra guide. This is located at the bottom (on the mudguard side) of the headlamp.

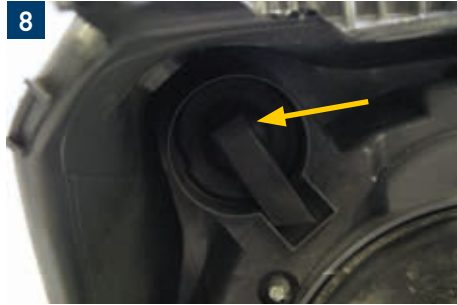


→ Pull the front panelling slightly forwards and remove the headlamp from the body.



7
Parking light and direction indicator light
(driver side / passenger side)

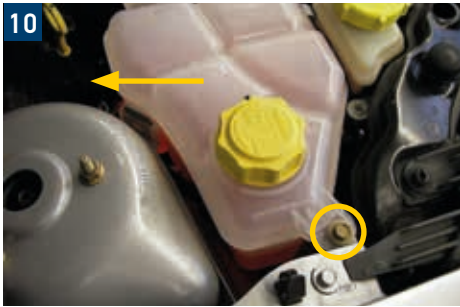
→ Disconnect the plug connection and remove the connector from the headlamp.



→ Remove the rubber cap from the parking light, take out the holder together with the lamp from the reflector and replace the bulb.



→ Turn the handle of the base plate for the lamp of the direction indicator light to the left as far as it will go and remove it with the bulb from the headlamp.



Low beam and high beam
(passenger side)

- Unscrew the fastening screw of the coolant expansion tank and pull the tank upwards out of the guide. Place the container to one side.
- Replace the bulb in the same way as on the driver's side.

Reinstall all the dismantled parts in reverse order.
Check functioning of the lighting system. Check headlamp adjustment and correct if necessary.

FORD FOCUS II 1.6I

(YEAR OF CONSTRUCTION
COMMENCING FROM 11.2004)



Replacing the light source

In order to replace the light sources in this kind of vehicle, you must follow the additional repair instructions found on page 3. As the work steps for both sides of this vehicle are identical, the procedure for just the one side is described as an example.



1
Low beam, high beam and parking light

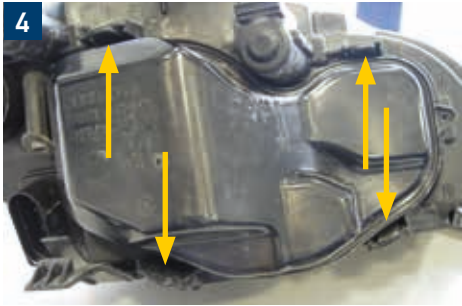
→ Unscrew the fastening screw (Torx 30) from the headlamp.



2
→ Reach behind the headlamp with one hand. Then pull the headlamp forwards with one tug and remove it from the body.



3
→ Disconnect the plug connection on the headlamp. Use a screwdriver to release the lock and then remove the central connector.



Low beam, high beam and parking light

→ Press the locking tabs on the headlamp cover out of the brackets and remove this.



→ The bulb in question can now be replaced.



Direction indicator light

→ Dismantle the headlamp as previously described.
→ Turn the bulb base plate to the left as far as it will go and then remove it together with the bulb from the headlamp.



Direction indicator light

- Reinstall all the dismantled parts in reverse order.
- When inserting the headlamp, it is important to make sure that the two lower brackets of the headlamp engage properly with the body.

Reinstall all the dismantled parts in reverse order. Check functioning of the lighting system. Check headlamp adjustment and correct if necessary.

FORD S-MAX

Replacing the light source

In order to replace the light sources in this kind of vehicle, you must follow the additional repair instructions found on page 3.



1 Low beam, high beam, position light and direction indicator light
(driver side / passenger side)



→ Unscrew the fastening screws (2 x Torx 30).



→ Remove the headlamp out of the body in a forward direction.
→ The relevant light source can now be replaced.

Reinstall all the dismantled parts in reverse order.
Check functioning of the lighting system. Check headlamp adjustment and correct if necessary.

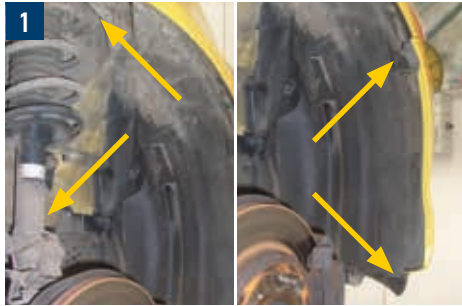
HONDA JAZZ

ALL ENGINES

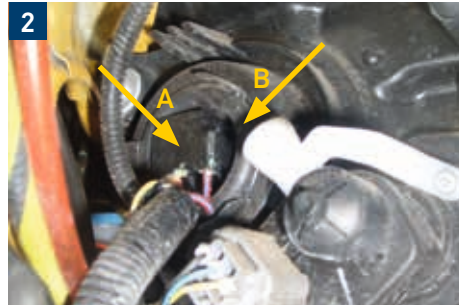


Replacing the light source

In order to replace the light sources in this kind of vehicle, you must follow the additional repair instructions found on page 3.



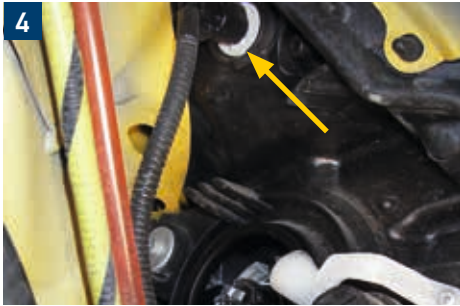
1
Low beam and high beam
(driver side / passenger side)



- Remove connector from the H4 bulb [shown at point A].
- Then remove the surrounding rubber seal from the headlamp housing [shown at point B].



- Release the spring wire clip and remove the lamp from the reflector.



Position light

- Remove the front inner panelling of the mudguard (expanding rivets [Fig. 1 on page 52]). To make removal easier, jack up the vehicle and unscrew the wheel if necessary.
- Turn the lamp holder (connector can remain connected) to the left and remove it from the reflector [Fig. 4].

Direction indicator light

- Replacing the direction indicator light is straightforward and is carried out by first opening the bonnet for access.

Reinstall all the dismantled parts in reverse order. Check functioning of the lighting system. Check headlamp adjustment and correct if necessary.

LAND ROVER

RANGE ROVER SPORT

WITH XENON LIGHT (YEAR OF CONSTRUCTION FROM 2005)



Replacing the light source

In order to replace the light sources in this kind of vehicle, you must follow the additional repair instructions found on page 3.



1 Low beam, high beam, dynamic cornering light, position light and direction indicator light (driver side / passenger side)

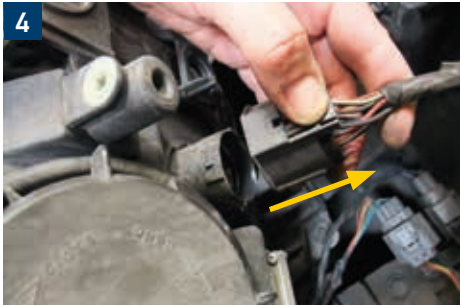


2 → Pull the fastening bracket upwards until the fastening points are exposed.



3 → Carefully pull the headlamp forwards out of the body.

→ Release the latching elements (4 x) from the radiator grille.
→ Pull the radiator grille forwards out of the lower guides and remove it from the body.



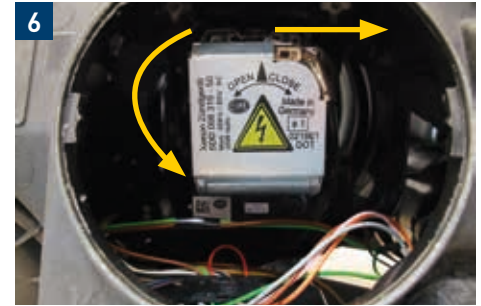
4
Low beam, high beam, dynamic cornering light,
position light and direction indicator light
(driver side / passenger side)

→ Use a screwdriver to release the locking mechanism of the plug connection and remove the connector.

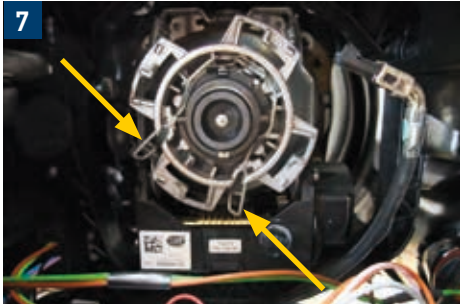


5
Low beam
(driver side / passenger side)

→ Turn the cover cap to the left and remove it from the housing.

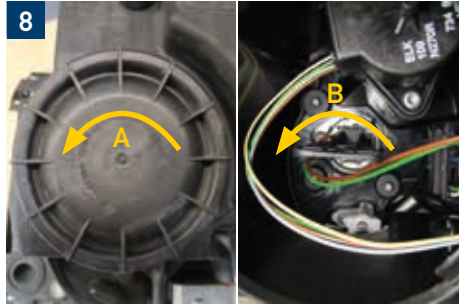


6
→ Turn the ignition module to the left and pull the cable for the supply voltage out of the module.
→ Carefully pull the ignition module backwards from the xenon lamp.



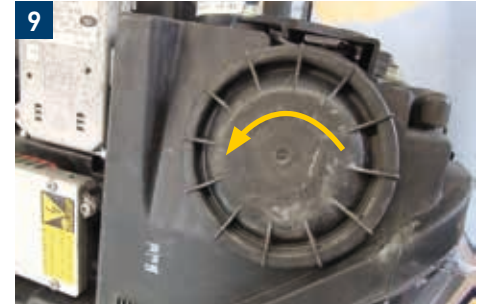
7
Low beam
 (driver side / passenger side)

→ Release the spring wire clip and carefully pull the xenon lamp backwards out of the reflector.



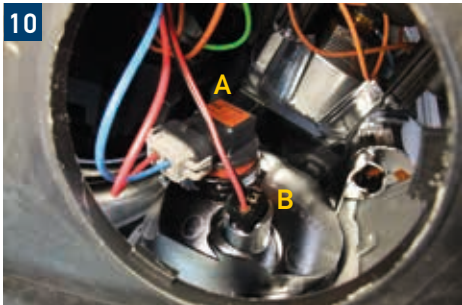
8
High beam
 (driver side / passenger side)

→ Turn the cover cap to the left and remove it from the housing [shown at point A].
 → Turn the handle of the base plate to the left and pull it backwards out of the reflector together with the bulb [shown at point B].



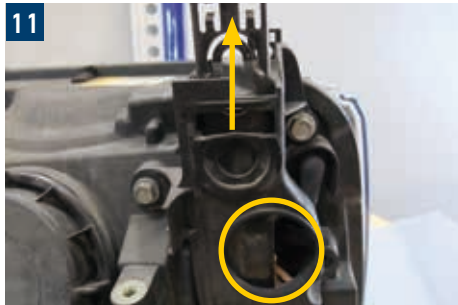
9
Dynamic cornering light and position light
 (driver side / passenger side)

→ Turn the cover cap to the left and remove it from the housing.



10
Dynamic cornering light and position light
(driver side / passenger side)

- Turn the lamp base plate of the H8 lamp to the left and remove it from the reflector [shown at point A].
- Pull the lamp base plate for the position light backwards out of the reflector [shown at point B].



11
Direction indicator light
(driver side / passenger side)

- Pull the rail for locking the headlamp upwards out of the guide until access to the handle of the base plate is freed up.
- Turn the handle of the base plate to the left and pull it together with the bulb out of the reflector.

Reinstall all the dismantled parts in reverse order. Check functioning of the lighting system. Check headlamp adjustment and correct if necessary.

MERCEDES-BENZ A-CLASS (W168)

ALL ENGINES



Replacing the light source

In order to replace the light sources in this kind of vehicle, you must follow the additional repair instructions found on page 3.



1
Low beam and high beam
(driver side / passenger side)



- Replacement is carried out via a flap on the inside of the mudguard.
- Jack up the car for better accessibility.
- Turn the bayonet closures to the left and then release them.
- Remove the cover from the mudguard.

- Release the locking mechanism on the cover cap. To do this, press the lever to the right.

- Remove the cap from the guides.



Low beam and high beam (driver side / passenger side)

- Disconnect the plug connection and spring wire bracket from the lamp and replace it.

Direction indicator light and position light

- Replacing the direction indicator light and position light is straightforward and can be done via the bonnet.

Reinstall all the dismantled parts in reverse order. Check functioning of the lighting system. Check headlamp adjustment and correct if necessary.

MINI COOPER S

PETROL ENGINE (YEAR OF
CONSTRUCTION FROM 2012 TO 2015)



Replacing the light source

In order to replace the light sources in this kind of vehicle, you must follow the additional repair instructions found on page 3.



Low beam

- The headlamp has to be removed in order to change the light sources.
- To do this, open the bonnet and secure it firmly.
- Undo and remove the screws [shown at points A] on the headlamp.

- Pull the headlamp slightly forwards and disconnect the hose connection of the headlamp cleaning nozzle.

- Remove / disconnect the electrical plug connection.
- Remove the headlamp from the vehicle.



Low beam

- Remove the cover cap on the back of the headlamp by unlocking the retaining clip.
- Disconnect the electrical connection.
- Turn ignition module to the left and remove (bayonet closure).
- When fitting the new xenon lamp or ignition module, it is important to ensure that everything is correctly seated in the lamp holder.



Direction indicator light (front)

- Remove the cover cap on the back.
- Turn the lamp holder together with bulb a quarter turn to the left and remove it from the headlamp.
- Press the bulb slightly downwards, turn it to the left and remove it from the lamp holder.

- Insert the new bulb into the holder, press down lightly and turn to the right.
- Replace the lamp holder.

Reinstall all the dismantled parts in reverse order. Check functioning of the lighting system. Check headlamp adjustment and correct if necessary.

OPEL CORSA D 1,4

(YEAR OF CONSTRUCTION
FROM 2007)



Replacing the light source

In order to replace the light sources in this kind of vehicle, you must follow the additional repair instructions found on page 3.



1
Low beam
(driver side)



→ Unscrew the two screws (Torx 20) of the wheel well trim on both sides.



→ Unscrew the lower fastening screws (5 x Torx 20) from the bumper.
→ Pull the bumper forwards away from the body.
→ **Caution!** Disconnect the plug connection from the air quality sensor (if present).



4
Low beam
(driver side)



→ Unscrew the fastening screws from the headlamp (3 x 8 mm) [Fig. 4 and 5] and pull the headlamp slightly forwards out of the body.

→ Unlock the plug connection on the headlamp and remove it from the headlamp.
→ Release the fastening bracket of the cover cap and remove the cap from the headlamp housing.



Low beam
(driver side)

- Carefully pull the bulb with the lamp connector backwards out of the reflector.



High beam and position light
(driver side)

- Pull the nozzle of the washer fluid reservoir upwards out of the guide and the tank.
- Turn the cover cap to the left and remove.
- The bulb in question can now be replaced.

Direction indicator light
(driver side)

- Remove headlamp, see low beam.
- Turn the bayonet base plate to the left and remove it together with the bulb out of the reflector.



9
Low beam
(passenger side)

→ Unscrew the screw (Torx 25) from the intake air duct and remove this.



→ Loosen the hose clamp on the air filter and pull the intake hose off the air filter.



→ Pull the air filter upwards out of the guides [Fig. 11 and 12 on page 66].



12
Low beam
(passenger side)

→ Release the fastening clip on the cover flap and remove it from the housing.



13
High beam and position light
(passenger side)

→ Unscrew the screw (Torx 25) from the intake air duct and remove this.



14
→ Turn the cover cap to the left and remove.
→ The bulb in question can now be replaced.

Reinstall all the dismantled parts in reverse order.
Check functioning of the lighting system. Check headlamp adjustment and correct if necessary.

OPEL SIGNUM / VECTRA V6 CDTI WITH XENON LIGHT



Replacing the light source

In order to replace the light sources in this kind of vehicle, you must follow the additional repair instructions found on page 3.



1
Low beam
(driver side)



- Release the retaining clip from the filler nozzle and pull the nozzle upwards out of the washer fluid tank.
- Turn the nozzle back and forth slightly.

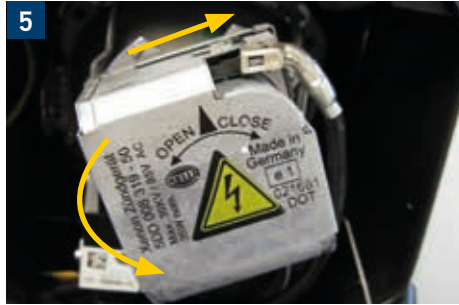


- Unscrew the fastening screws from the headlamp housing cover (Torx 20).
- The next thing is to fold the cover backwards as far as possible and then pull it upwards out of the brackets.



4
Low beam
 (driver side)

→ Pull the safety bracket forwards.



5

→ Turn the ignition module to the left as far as it will go. At the same time the cable for the supply voltage is automatically pushed out of the ignition module.
 → Remove ignition module from the xenon lamp.
 → Loosen the spring wire clip and replace the xenon lamp.



6
Parking light
 (driver side)

→ Turn the handle of the base plate to the left and then remove it from the reflector together with the lamp.



7
High beam and static dynamic cornering light
(driver side)

→ Unscrew the fastening screws from the headlamp housing cover (Torx 20) and remove the cover.



8
Direction indicator light
(driver side)

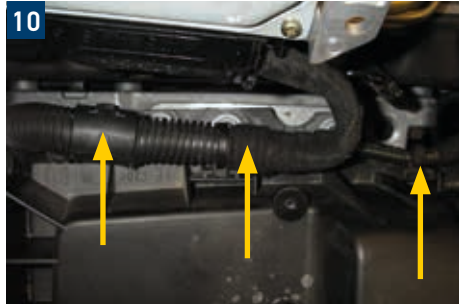
→ Remove the connector from the H1 lamp (left-hand plug connection), push back the spring clips and replace the lamp.
→ Remove the connector of the H11 lamp (right plug connection), turn the lamp base plate upwards and remove it from the reflector together with the lamp.

→ The lamp for the direction indicator light is called a "long-life lamp" and generally lasts for the entire life of a car.
And it also cannot be replaced.



9
Direction indicator light
(passenger side)

→ Unscrew the fastening screws from the engine control unit on the air filter box.



→ Open or loosen the harness fastening clips. Turn the control unit 180° and place it on the engine.



→ Disconnect the plug connection of the mass air flow sensor, loosen the outer hose clamp and pull off the intake air hose.



Direction indicator light
(passenger side)

→ Also remove the air hose underneath.



- Pull the air filter box (diagonally upwards to the right) out of the guides [Fig. 13].
- The hose for the crankcase ventilation is also removed at the same time [Fig. 14].



- All lamps can now be replaced as listed on the driver's side.

Reinstall all the dismantled parts in reverse order. Check functioning of the lighting system. Check headlamp setting and correct if necessary using a diagnostic tester (read out error code, basic setting of headlamp levelling etc.).

OPEL ZAFIRA II 1.6i

(YEAR OF CONSTRUCTION
COMMENCING FROM 07.05)



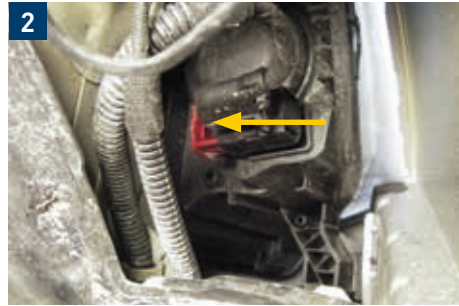
Replacing the light source

In order to replace the light sources in this kind of vehicle, you must follow the additional repair instructions found on page 3. As the work steps for both sides of this vehicle are identical, the procedure for just the one side is described as an example.



1
Low beam

→ Remove the service flap in the wheel arch.



→ Disconnect the plug connection on the headlamp.
To do this, press the safety bracket to the left and then remove the central connector.

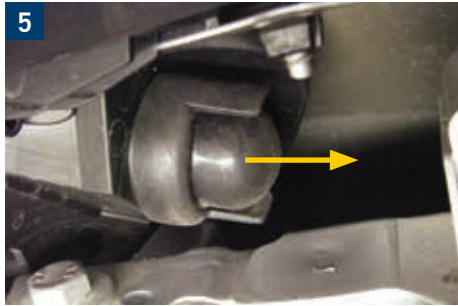


→ Remove the rubber cap from the back of the headlamp housing.
→ Turn the bulb holder to the left and remove it together with the bulb from the reflector.



Low beam

- Use a small screwdriver to bend the safety bracket until it can be pushed over the locking tab.
- Replace bulb.



Direction indicator light

- Pull off the rubber cap.



- Turn the bulb holder to the left and remove it together with the bulb from the headlamp.
- As the holder has quite a tight fit, flat-nose pliers can also be used to help remove it.



High beam and parking light

→ Remove the rubber cap and replace the relevant bulb.

Reinstall all the dismantled parts in reverse order. Check functioning of the lighting system. Check headlamp adjustment and correct if necessary.

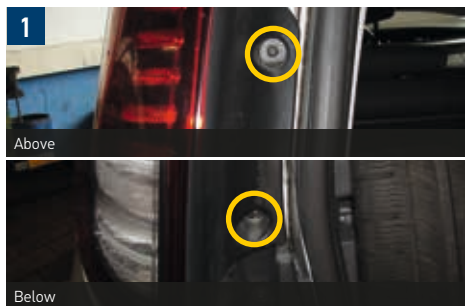
RENAULT ESPACE IV

ALL ENGINES



Replacing the light source

In order to replace the light sources in this kind of vehicle, you must follow the additional repair instructions found on page 3.



Position light, stop light, direction indicator light, fog light and reverse light
(Rear lamp)

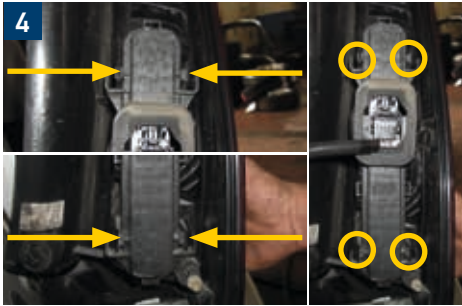


→ Unscrew the fastening screws of the rear lamp.

→ The lamp is fastened to the body at two points with ball head fittings.

→ Carefully press a rubber wedge between the body and the lamp until the ball head fittings are released out of the brackets.

→ **Caution!** Do not use a screwdriver for this. If the pressure surface or contact surface is too minimal, there is a risk of parts breaking out of the lamp.



4
Position light, stop light, direction indicator light, fog light and reverse light
 (Rear lamp)

→ Unlock the four latching mechanisms so that the lamp holder can be removed from the lamp.



5
 → Replace the appropriate lamp in the lamp holder [Fig. 5, rotated 90°].

Reinstall all the dismantled parts in reverse order. Check functioning of the lighting system. Check headlamp adjustment and correct if necessary.

RENAULT LAGUNA (K74) 2.2 DCI

WITH XENON LIGHT (YEAR OF CONSTRUCTION COMMENCING FROM 05.2005)

Replacing the light source

In order to replace the light sources in this kind of vehicle, you must follow the additional repair instructions found on page 3.



1
Low beam
(passenger side)



→ Turn the fastening clip 90° anti-clockwise and remove the cover. To do this, lift the cover slightly and pull it towards the engine's interior.

→ Pull the power steering oil reservoir upwards out of its bracket and place it to one side.
→ Remove the cover cap from the headlamp housing.

→ Turn the ignition module to the left as far as it will go and remove it from the xenon lamp.
→ Loosen the spring wire bracket and replace the lamp.



4
Direction indicator light
(passenger side)

- Pull the filler nozzle of the storage reservoir for the windscreen washer system in an upward direction. Move the nozzle back and forth slightly [Fig. 4].
- Turn the handle of the direction indicator holder to the left and remove it together with the bulb [Fig. 5].



5
High beam and parking light
(passenger side)

- Remove the rubber cap of the high beam lamp from the headlamp housing.
- The bulbs can now be replaced - ensuring that you handle them delicately.



6
Low beam
(passenger side)

- Unscrew the fastening screw from the intake duct (Torx 20).



7
Low beam
(passenger side)

- The intake duct consists of two parts and can be separated.
- Use a screwdriver to gently press down the locking tab.



- At the same time, pull the front part of the intake duct forwards and remove it upwards out of the engine compartment.
- The bulbs can now be removed as described for those on the passenger side.

Reinstall all the dismantled parts in reverse order. Check functioning of the lighting system. Check headlamp setting and correct if necessary using a diagnostic tester (read out error code, basic setting of headlamp levelling etc.).

RENAULT MODUS

ALL ENGINES



Replacing the light source

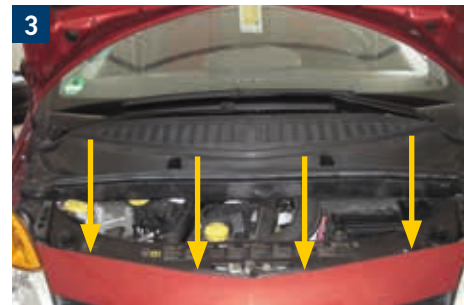
In order to replace the light sources in this kind of vehicle, you must follow the additional repair instructions found on page 3.



1
Low beam and high beam
(driver side / passenger side)



2
→ Remove the underbody panelling (10 SW).

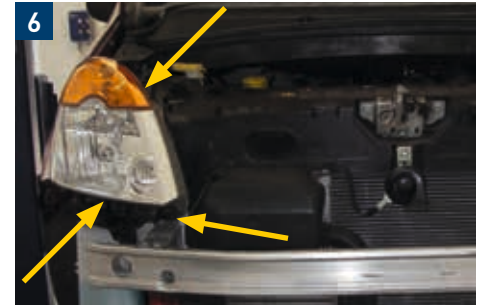


3
→ To remove the front apron, remove the upper fastening screws (4 pieces).

→ Remove the front fastening screws of the mudguard inner panelling (Torx 20 screws). To make removal easier, jack up the vehicle and unscrew the wheel if necessary.



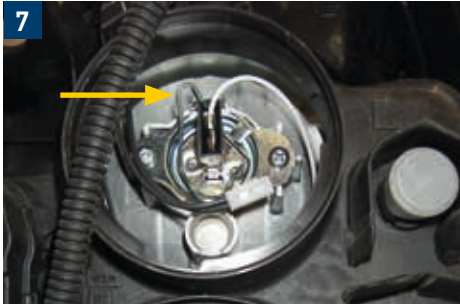
Low beam and high beam
(driver side / passenger side)



→ Unscrew the fastening screws (10 SW) at the ends of the front apron.

→ Pull the front apron forwards.

→ Remove the fastening screws (3 pieces, 10 SW) from the headlamp and, bringing this a little forwards, lift it out of the body.
→ As an option, the plug connections can also be disconnected so that the headlamp can be completely taken out.

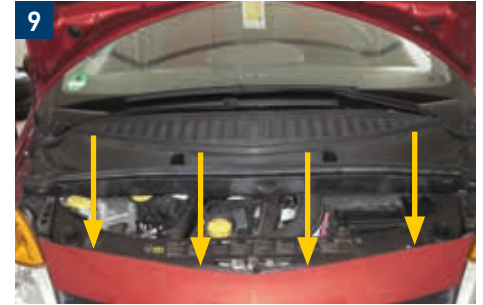


7
Low beam and high beam
(driver side / passenger side)

- Turn the cover cap in question to the left and remove.
- Loosen the spring wire clip on the high beam (upper reflector) and replace the lamp.



8
→ For the low beam, pull the lamp backwards out of the reflector together with the plug.



9
Position light

- To loosen the front apron, remove the upper fastening screws (4 pieces).

10



Position light

- Carefully pull the front apron forwards until the lamp holder becomes visible and can be reached by hand.
- Turn the lamp holder to the left and remove it from the reflector together with the lamp.

Direction indicator light

- Replacing the direction indicator light is straightforward and is carried out by first opening the bonnet for access.

Reinstall all the dismantled parts in reverse order. Check functioning of the lighting system. Check headlamp adjustment and correct if necessary.

SKODA OCTAVIA 2.0 FSI

WITH BI-XENON HEADLAMPS

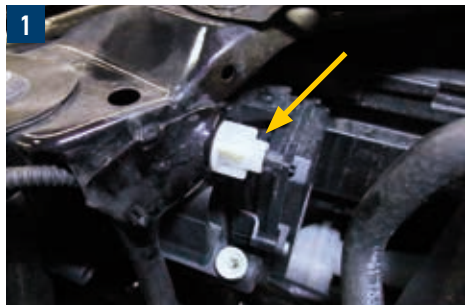
(YEAR OF CONSTRUCTION

COMMENCING FROM 01.2009)

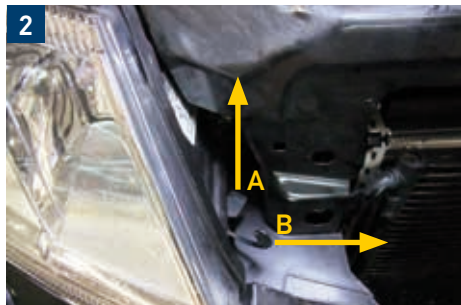


Replacing the light source

In order to replace the light sources in this kind of vehicle, you must follow the additional repair instructions found on page 3.



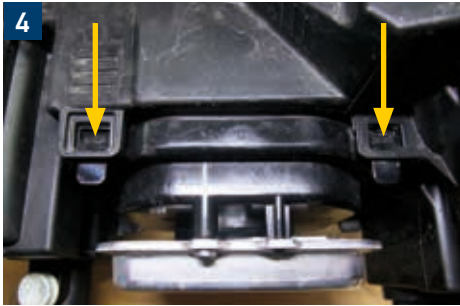
1
Low beam, high beam, position light and direction indicator light
(driver side / passenger side)



- 2**
- Press the small lever upwards and hold it in this position [shown at point A].
 - Then pull the locking rod backwards [shown at point B].



- 3**
- Move the headlamp forwards out of the body.
 - Disconnect the plug connection from the headlamp.



4
Low beam
(driver side / passenger side)

- Release the locking tabs at the top and bottom of the cover cap and remove the cap.
- **Caution!** When removing the cap, it is important to pay attention to the supply cable from the ballast.



- 5**
- Turn the ignition module to the left and carefully remove it from the reflector.
 - Unlock the plug connection from the ignition module and disconnect the cable.



6
High beam
(driver side / passenger side)

- Release the locking tabs at the top and bottom of the cover cap and remove the cap.



High beam
(driver side / passenger side)

→ Remove the connector from the bulb, unlock the spring wire clip and remove the lamp from the reflector.



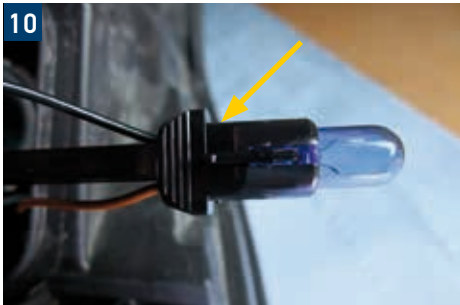
Direction indicator light
(driver side / passenger side)

→ Turn the bayonet base plate to the left and remove it together with the bulb from the reflector.



Position light
(driver side / passenger side)

→ To access the bulb, the xenon lamp must first be removed; see work steps for the low beam.



Position light
(driver side / passenger side)

- Pull the handle of the base plate with the bulb backwards out of the reflector.
- **Caution!** When fitting the handle of the base plate, it is important that you hear it locking into place.

Reinstall all the dismantled parts in reverse order.
Check functioning of the lighting system. Check headlamp adjustment and correct if necessary.

SKODA ROOMSTER 1.9 TDI

WITH BI-HALOGEN HEADLAMPS
(YEAR OF CONSTRUCTION FROM
2006 TO 2010)



Replacing the light source

In order to replace the light sources in this kind of vehicle, you must follow the additional repair instructions found on page 3.



Low beam, high beam and direction indicator light
(driver side)

→ The light sources can be replaced without any problems.



Position light
(driver side)

→ The battery must be removed in order to have sufficient space to carry out replacement work.

→ The lamp holder is installed deep in the headlamp and can only be seen by means of a mirror.
→ In some cases, the lamp holder sits very tightly in the reflector. Because of this and also on account of the small access opening, it is recommended to use needle-nose pliers for disassembly work.

Low beam and high beam (passenger side)

→ The light sources can be replaced without any problems.



Direction indicator light (passenger side)

→ In order to have enough space for your hand, pull the hose to the fuel filter out of the bracket and then push it to the right. Now you can reach the bayonet base plate.



Position light (passenger side)

→ Remove the cooling water tank. To do this, disconnect the plug connection on the container.



5
Position light
(passenger side)

→ Pull the cable guide upwards away from the threaded bolts and unscrew the fastening screws (2 x 10 mm).



→ Unscrew the screws (2 x 10 mm) and remove the metal bracket.



→ Remove the threaded bolts from the coolant tank (2 x 10 mm) [Fig. 6] and put to one side.



Position light
(passenger side)

- Remove the rubber cap from the position light.
The lamp holder is installed deep in the headlamp.
Use needle-nose pliers to carefully pull the lamp holder backwards out of the reflector.

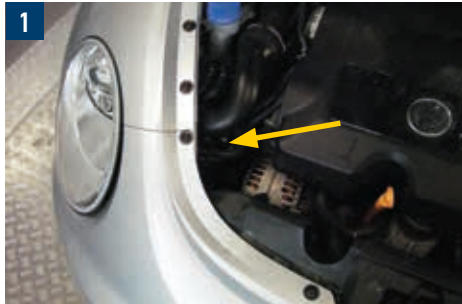
Reinstall all the dismantled parts in reverse order.
Check functioning of the lighting system. Check headlamp adjustment and correct if necessary.

VW BEETLE 1.9 TDI PD



Replacing the light source

In order to replace the light sources in this kind of vehicle, you must follow the additional repair instructions found on page 3. As the work steps for both sides of this vehicle are identical, the procedure for just the one side is described as an example.



Low beam

→ Unlock the headlamp housing. To do this, use a hexagonal socket (5 width across flats) to turn the lever slightly to the left until you hear a "clicking" sound.



→ The lever is located at the lower edge of the headlamp [Fig. 1 and 2].

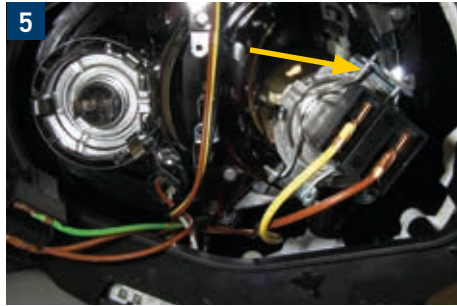


→ Press down the bracket of the safety locking plate and carefully push the headlamp out of the body from behind.

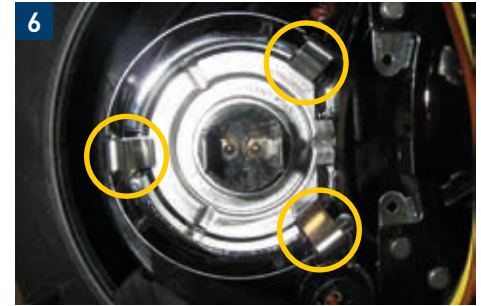


Low beam

- The safety locking plate is clearly visible when the headlamp is removed. On the driver's side, you need a long screwdriver or something similar to reach the lever.
- Press the safety bracket of the cover cap upwards and remove the cap from the back of the headlamp housing.

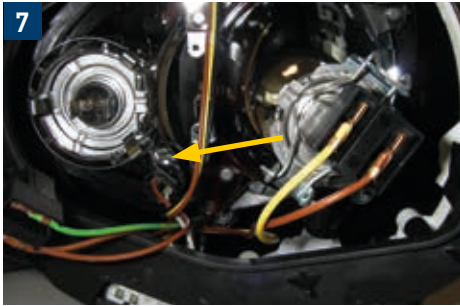


- Disconnect the connector from the lamp.
- Loosen the spring wire clip and replace the bulb.



High beam

- Remove the headlamp as previously described and remove the cover cap.
- Press the brackets back slightly with a screwdriver and replace the bulb.



7
Parking light

- Remove the headlamp as previously described and remove the cover cap.
- Remove the bulb base plate together with the lamp from the reflector and replace the lamp.



8
Direction indicator light

- Use a screwdriver to push the direction indicator housing forwards out of the bumper.
- Turn the bulb holder with connector to the left as far as it will go and remove it from the lamp housing.



9

- Remove the plug from the lamp and replace this.
- Reinstall all the dismantled parts in reverse order. Check functioning of the lighting system. Check headlamp adjustment and correct if necessary.

VW PASSAT (B5) 1.9 TDI



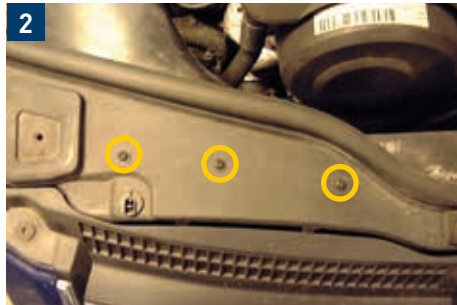
Replacing the light source

In order to replace the light sources in this kind of vehicle, you must follow the additional repair instructions found on page 3.



1
Low beam, high beam, parking light and direction indicator light
(driver side)

- Undo and remove the cover from the brake fluid reservoir.
- Remove the cover cap of the relevant bulb from the back of the headlamp housing.

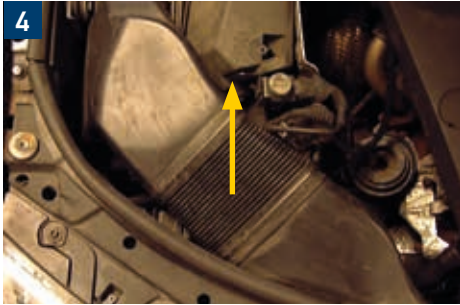


2
Low beam, high beam, parking light and direction indicator light
(passenger side)

- Unscrew the fastening screws from the intake air duct.

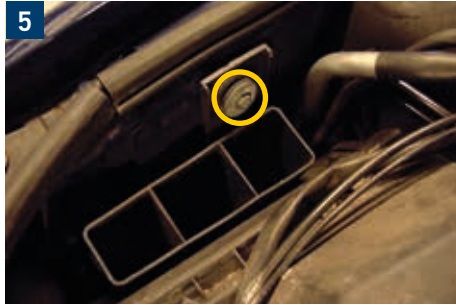


- Remove the cover caps from the fastening screws, unscrew the screws and remove the plastic cover.

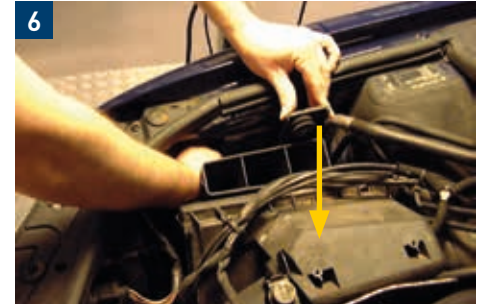


4
Low beam, high beam, parking light and direction indicator light
(passenger side)

→ Pull the air duct upwards from the air filter box.



5
→ Unscrew the fastening screw from the air filter box [Fig. 5].
→ So as to gain better access to the headlamp housing cap, push the air filter box approx. 5 cm towards the engine's interior and fix it in this position [Fig. 6].



6
→ Replace the relevant bulb, as on the driver's side.
Reinstall all the dismantled parts in reverse order. Check functioning of the lighting system. Check headlamp adjustment and correct if necessary.

VW POLO (9N) 1.4 TDI



Replacing the light source

In order to replace the light sources in this kind of vehicle, you must follow the additional repair instructions found on page 3.



1
Low beam
(driver side)

→ In order to have a little more space for installation, remove the battery cover and the fuse holder underneath from the fastening lugs and slide slightly to the left.

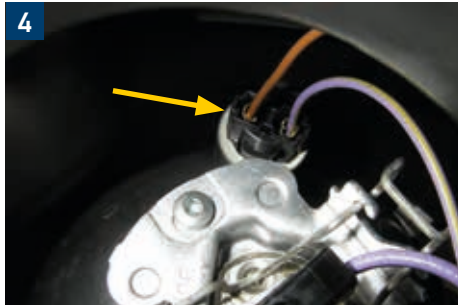


2
Direction indicator light
(driver side)

→ Remove the rubber cap (low beam) from the headlamp housing.
→ Remove the plug connection from the bulb and turn the fastening ring to the left.
→ Pull the bulb out of the reflector and replace it.



→ Turn the cover cap to the left and remove.
→ Turn the handle of the holder for the lamp of the direction indicator light to the left and remove it together with the lamp. Replace this.



High beam and parking light
(driver side)

- In order to access these two bulbs, the battery must be removed first. Make a note of the radio code beforehand.
- Remove the rubber cap (high beam and parking light) from the headlamp housing.
- Detach the spring wire clip and plug connection from the high beam lamp and replace the lamp.



Low beam
(passenger side)

- Pull the lamp holder for the parking light out of the reflector at the connector.
- Unscrew the fastening screw (Torx 40) from the fuel filter.

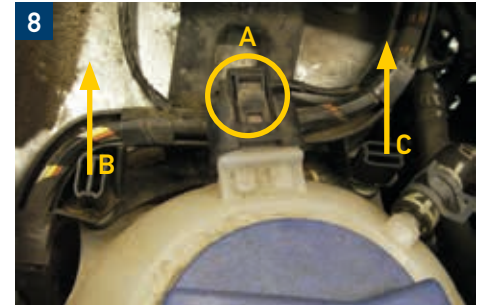


6
Low beam
(passenger side)

- Carefully bend the fuel filter slightly to the side.
- **Caution!** In vehicles with air conditioning, it is important to pay attention to the refrigerant line.



- The rubber cap is now within reach for "slim" hands.
- In order to gain more space, the coolant expansion tank should be removed.



- Loosen the plug connection [shown at point A] and pull the cable bridge upwards from the threaded bolts [shown at points B and C].
- Remove the fastening nuts from the expansion tank and put it to one side without loosening the hoses.

High beam, parking light and direction indicator light

→ Replace as described on the driver's side (without removing the battery).

Reinstall all the dismantled parts in reverse order. Check functioning of the lighting system. Check headlamp adjustment and correct if necessary.

2

ELECTRIC AND HYBRID VEHICLES



SAFETY INFORMATION FOR ELECTRIC VEHICLES

Observe the following when working on or in the immediate vicinity of high-voltage systems:

All repair work must only be carried out by 'electrically trained personnel'. Before the repair, the high-voltage (HV) system must be disconnected from the voltage by an HV expert who is certified to work on these types of systems. Country specific laws and regulations on working on high-voltage systems must be observed and followed.

RENAULT ZOE

ELECTRIC VEHICLES (YEAR OF CONSTRUCTION FROM 2012)



Replacing the light source

In order to replace the light sources in this kind of vehicle, you must follow the additional repair instructions found on page 3.



Low beam and high beam

→ Remove the rubber cover [shown at point A] on the back of the headlamp.

→ Turn the electrical connection with the lamp holder to the left and remove from the base plate complete with bulb.

→ Remove the bulb from the holder.

→ When installing the new bulb, it is important to make sure that the bulb is correctly seated in the lamp holder.

→ Reassemble lamp holder in the reverse order.



Direction indicator light
(front)

- Turn the lamp holder together with bulb a quarter turn to the left and remove it from the headlamp.
- Press the bulb slightly downwards, turn it to the left and remove it from the lamp holder.
- Insert the new bulb into the holder, press down lightly and turn to the right.

Reinstall all the dismantled parts in reverse order. Check functioning of the lighting system. Check headlamp adjustment and correct if necessary.

TOYOTA AURIS

HYBRID



Replacing the light source

In order to replace the light sources in this kind of vehicle, you must follow the additional repair instructions found on page 3.

Low beam, high beam, position light and direction indicator light
(driver side)

→ The light sources can be replaced without any problems.

Low beam, position light and direction indicator light
(passenger side)

→ The light sources can be replaced without any problems.



High beam
(passenger side)

→ Remove the coolant reservoir. To do this, unscrew the screws (2 x 10 mm) and pull the container upwards out of the guide.
→ Then place the container to one side on the right.



High beam
(passenger side)

→ Now you can reach the light source with your left hand.



→ Turn the light source (H8) to the left and pull it out of the reflector.
→ Disconnect the plug connection from the light source and replace it.

Reinstall all the dismantled parts in reverse order. Check functioning of the lighting system. Check headlamp adjustment and correct if necessary.

TOYOTA C-HR

HYBRID (YEAR OF CONSTRUCTION
FROM 2016 TO 2020)



Replacing the light source

In order to replace the light sources in this kind of vehicle, you must follow the additional repair instructions found on page 3.



Low beam and high beam

- Turn the lamp holder together with bulb a quarter turn to the left and remove it from the headlamp (bayonet closure).
- Disconnect the bulb with base plate from the electrical connector.

- Insert new bulb, fix connector [Fig. 1].
- When installing the new bulb, it is important to make sure that the bulb is correctly seated in the lamp holder.



**Direction indicator light
(front)**

- Turn the lamp holder together with bulb a quarter turn to the left and remove it from the headlamp.
- Press the bulb slightly downwards, turn it to the left and remove it from the lamp holder.
- Insert the new bulb into the holder, press down lightly and turn to the right.

Parking light and daytime running light

→ LED module. No replacement of individual light sources planned.

Reinstall all the dismantled parts in reverse order. Check functioning of the lighting system. Check headlamp adjustment and correct if necessary.

VW E-UP!

ELECTRIC VEHICLES (YEAR OF CONSTRUCTION FROM 2013)



Low beam and high beam

- Carefully remove the electrical connector from the bulb.
- Remove the rubber cover on the back of the headlamp.
- Unhook the safety bracket from the bulb and fold it to the side.

Replacing the light source

In order to replace the light sources in this kind of vehicle, you must follow the additional repair instructions found on page 3.



Parking light and daytime running light

- Turn the lamp holder with bulb a quarter turn to the left and remove it from the headlamp [shown at point 1].
- Press the bulb slightly downwards, turn it to the left and remove it from the lamp holder.
- Insert the new bulb into the holder, press down lightly and turn to the right.

3



Direction indicator light (front)

- Turn the lamp holder with bulb a quarter turn to the left and remove it from the headlamp [shown at point 2].
- Press the bulb slightly downwards, turn it to the left and remove it from the lamp holder.
- Insert the new bulb into the holder, press down lightly and turn to the right.

Reinstall all the dismantled parts in reverse order.
Check functioning of the lighting system. Check headlamp adjustment and correct if necessary.

HELLA GmbH & Co. KGaA

Rixbecker Straße 75

59552 Lippstadt, Germany

Tel.: +49 2941 38-0

Fax: +49 2941 38-7133

Internet: www.hella.com

© HELLA GmbH & Co. KGaA, Lippstadt

J01980/02.24

Subject to technical and price modifications.