



# BRIEF INFORMATION

## Metal Wiper

- Streak-free Rubber
- Graphite-coated rubber
- EASY CHANGE System

## PRODUCT FEATURES



### TECHNOLOGY TRENDS

- Significant decline in OE for years
- Still in high demand in the Aftermarket

### CHALLENGES

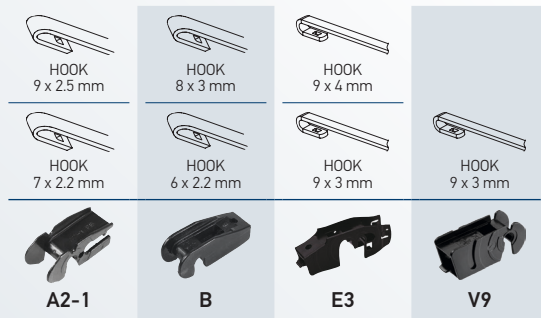
- Price pressure
- Increasing environmental awareness (packaging)

### SOLUTION (BY HELLA)

- Value for money
- Less PN's – Full coverage
- Recyclable carton packaging

You can always depend on metal wiper blades from HELLA. The blades' rubber lips are coated with graphite so that they can be constantly exposed to the most intense stresses. In addition, the design minimises annoying wind noise. This means smooth and quiet operation with longer lasting performance, which in turn improves safety and driving comfort.

## DETAILS



STREAK-FREE  
SILENT



ALL-WEATHER  
SAFETY

## VARIANTS

Short Code	Length inch	Adapter	Part number
S13	13"	E3, B, A2-1	398114013
S14	14"	E3, B, V9	398114014
S15	15"	E3, B, V9	398114015
S16	16"	E3, B, V9	398114016/1
S18	18"	E3, B, V9	398114018/1
S19	19"	E3, B, V9	398114019
S20	20"	E3, V9	398114020
S21	21"	E3, V9	398114021
S22	22"	E3, V9	398114022
S24	24"	E3, V9	398114024
S26	26"	E3, V9	398114026
S28	28"	E3	398114028
S11P	11" + 11"	E3, B, E, V9	398114011
S16P	16" + 16"	E3, B, V9	398114016
S18P	18" + 18"	E3, B, V9	398114018
S19/21P	19" + 21"	E3, B, V9	398114019/21
S14P	14" + 14"	E3, B, V9	398114014/14
S20P	20" + 20"	E3, V9	398114020/20
S22P	22" + 22"	E3	398114022/22