



## BRIEF INFORMATION

### HELLA VALUEFIT

### R2100, S3000 and S5000

- Universal LED work lamps for large-area illumination
- 3 versions with diverse light performance up to 5,000 lumens
- Robust die-cast aluminium housing
- Compact size for universal applications
- Position light in white (ECE R148) or amber

## PRODUCT FEATURES

With this HELLA ValueFit work lamp series, a powerful and versatile lighting series has been developed to meet the requirements of diverse working environments. Light performance and stylish design have been married together in these compact LED work lamps. The work lamps are veritable powerhouses with a light output of 2,100 lumens (R2100), 3,000 lumens (S3000) and also 5,000 lumens (S5000) when extremely powerful lighting is required.

The lens is made from special plastic, the housing from lightweight yet robust aluminium and the bracket is crafted from corrosion-resistant stainless steel in order to ensure a long service life.

With protection classes IP 6K7 and IP 6K9 and also boasting ECE R10 type approval, this work lamp is designed to handle harsh conditions and to comply with industry standards.

Version 2.0 combines the vehicle's lighting upgrade with the possibility of customising the vehicle design. These work lamps have an additional position light function that can be fitted with either a white

or amber position light. The white position light is homologated in accordance with ECE R148 and can be used in normal road traffic situations. The amber position light is only to be used as an off-road application and it makes for a striking impact.

Various mounting options and the 300-mm harness with 4-pin DT connector, which is supplemented by a 500-mm adapter harness with open end, make the installation of version 2.0 very simple. The S3000 with its amber lens was developed for particularly adverse operating conditions and it ensures optimum visibility in snow, dust and fog.

The HELLA VALUEFIT products are safe and reliable and enable a cost-effective changeover to maintenance-free LED technology.

# TECHNICAL DETAILS

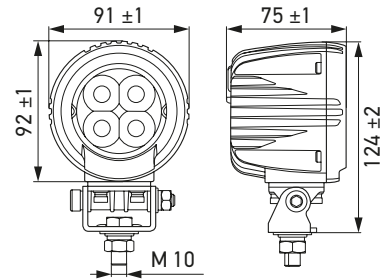
## HELLA VALUEFIT R2100 AND R2100 2.0



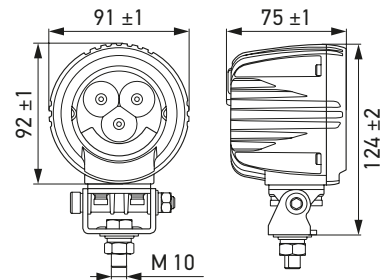
Technical data		
Variant	R2100	R2100 2.0
Operating voltage range	Multi-voltage (12 – 48 V)	Multi-voltage (12 – 30 V)
Rated voltage	12 V and 24 V	
Current consumption	1,80 A (12 V) 0,88 A (24 V)	2,40 A (12 V) 1,16 A (24 V)
Power consumption	21 W	29 W
Light output	2,100 lm	
Light source	LED	
Colour temperature	6,000 K	
Material	Housing: aluminium Cover lens: PC Fastening bracket: stainless steel	
Temperature range	- 40°C to + 65°C	
Protection class	IP 6K7, IP 6K9	
Approved	ECE-R10	ECE R10, ECE R148, ECE R86 (white position light)
Mounting	Upright and pendant	Upright
Connection	DEUTSCH DT connector, 800-mm cable	300-mm harness with 4-pin DEUTSCH DT connector with 500-mm cable

### Dimensional sketch

HELLA VALUEFIT R2100



HELLA VALUEFIT R2100 2.0





The work lamp with a white position light is to be mounted without inclination (0°) whenever used in normal road traffic.

Max. Mounting height: 400 – 2,500 mm

**Please note:**

The AMBER position light does not have ECE approval: use is limited to off-road areas away from public roads. (See installation instructions).

## PROGRAM OVERVIEW

Product Image	Variant	Light Function	Part Number	PU*
	HELLA VALUEFIT R2100	Close-range illumination	160 357 109-101	1
	HELLA VALUEFIT R2100 2.0	Close-range illumination Position light: white or amber	160 357 109-111	1

\* Packaging unit

# TECHNICAL DETAILS

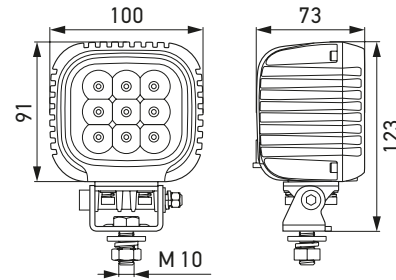
## HELLA VALUEFIT S3000 AND S3000 2.0



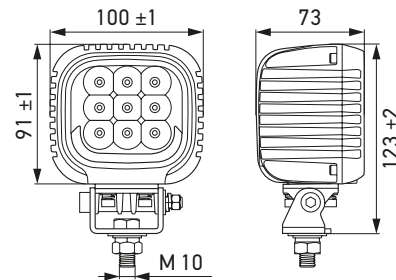
Technical data		
Variant	S3000	S3000 2.0
Operating voltage range	Multi-voltage (10 – 52 V)	Multi-voltage (12 – 30 V)
Rated voltage	12 V and 24 V	
Current consumption	2.6 A (12 V) 1.3 A (24 V)	2.9 A (12 V) 1.6 A (24 V)
Light source	LED	
Colour temperature	6,000 K (white) 1,800 K (amber)	6,000 K
Material	Housing: aluminium Cover lens: PC Fastening bracket: stainless steel	
Temperature range	- 40°C to + 65°C	
Protection class	IP 6K7, IP 6K9	
Approved	ECE-R10	ECE R10, ECE R148, ECE R86 (white position light)
Mounting	Upright and pendant	Upright
Connection	DEUTSCH DT connector, 800-mm cable	300-mm harness with 4-pin DEUTSCH DT connector with 500-mm cable

### Dimensional sketch

HELLA VALUEFIT S3000



HELLA VALUEFIT S3000 2.0



The work lamp with a white position light is to be mounted without inclination (0°) whenever used in normal road traffic.

Max. Mounting height: 400–2,500 mm

**Please note:**

The AMBER position light does not have ECE approval: use is limited to off-road areas away from public roads. (See installation instructions).

## PROGRAM OVERVIEW

Product Image	Variant	Light Function	Light Output	Power Consumption	Part Number	PU*
		Close-range illumination	3,000 lm	31 W	1GA 357 109-002	1
	HELLA VALUEFIT S3000	Long-range illumination	3,400 lm	31 W	1GA 357 109-012	1
		Close-range illumination (amber)	2,200 lm	25 W	1GA 357 109-022	1
	HELLA VALUEFIT S3000 2.0	Close-range illumination Position light: white or amber	3,000 lm	38 W	1GA 357 109-031	1
		Long-range illumination Position light: white or amber	3,000 lm	38 W	1GA 357 109-041	1

\* Packaging unit

# TECHNICAL DETAILS

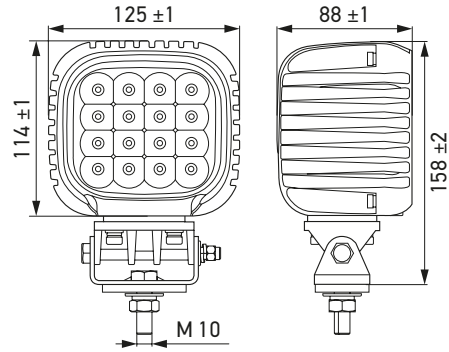
## HELLA VALUEFIT S5000 AND S5000 2.0



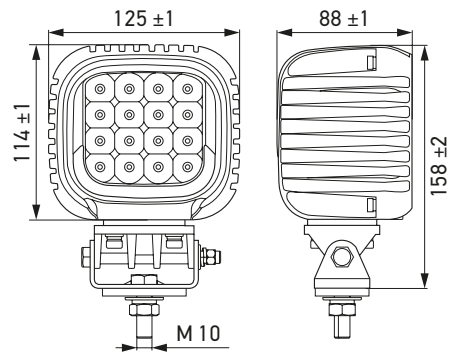
Technical data		
Variant	S5000	S5000 2.0
Operating voltage range	Multi-voltage (12 – 48 V)	Multi-voltage (12 – 30 V)
Rated voltage	12 V and 24 V	
Current consumption	3,90 A (12 V) 2,00 A (24 V)	5,5 A (12 V) 2,80 A (24 V)
Power consumption	47 W	66 W
Light output	5,000 lm	
Light source	LED	
Colour temperature	6,000 K	
Material	Housing: aluminium Cover lens: PC Fastening bracket: stainless steel	
Temperature range	- 40°C to + 65°C	
Protection class	IP 6K7, IP 6K9	
Approved	ECE-R10	ECE R10, ECE R148, ECE R86 (white position light)
Mounting	Standing and hanging	Upright
Connection	DEUTSCH DT connector, 800-mm cable	300-mm harness with 4-pin DEUTSCH DT connector with 500-mm cable

### Dimensional sketch

HELLA VALUEFIT S5000



HELLA VALUEFIT S5000 2.0



The work lamp with a white position light is to be mounted without inclination (0°) whenever used in normal road traffic.  
Max. Mounting height: 400 – 2,500 mm

**Please note:**

The AMBER position light does not have ECE approval: use is limited to off-road areas away from public roads.  
(See installation instructions).

## PROGRAM OVERVIEW

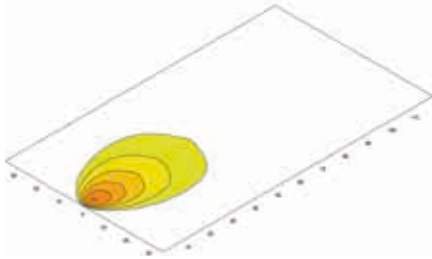
Product Image	Variant	Light Function	Part Number	PU*
	HELLA VALUEFIT S5000	Close-range illumination	1GA 357 109-201	1
		Long-range illumination	1GA 357 109-211	1
	HELLA VALUEFIT S5000 2.0	Close-range illumination Position light: white or amber	1GA 357 109-221	1
		Long-range illumination Position light: white or amber	1GA 357 109-231	1

\* Packaging unit

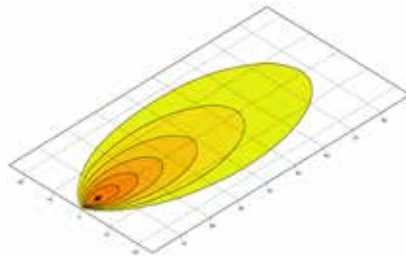
# LIGHT DISTRIBUTIONS

R2100	S3000	S5000
-------	-------	-------

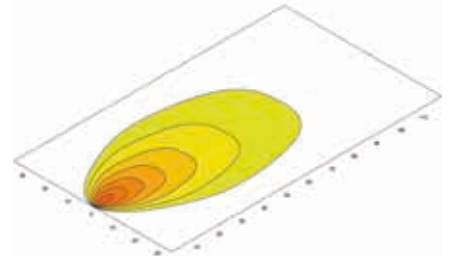
## Close-range illumination



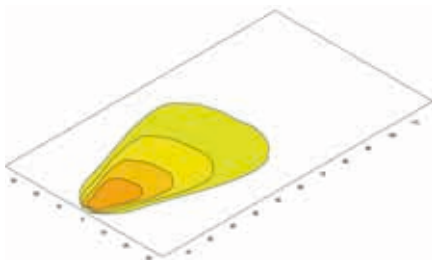
1G0 357 109-101



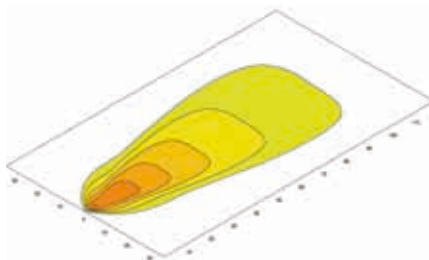
1GA 357 109-002



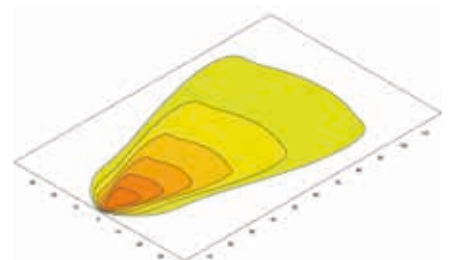
1GA 357 109-201



1G0 357 109-111

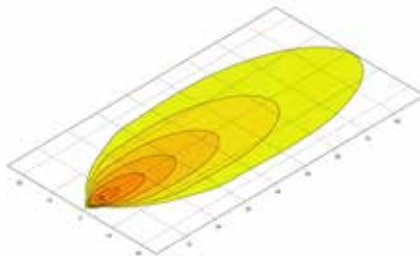


1GA 357 109-031

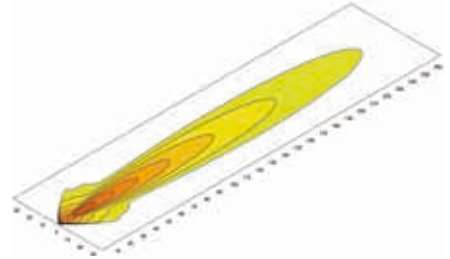


1GA 357 109-221

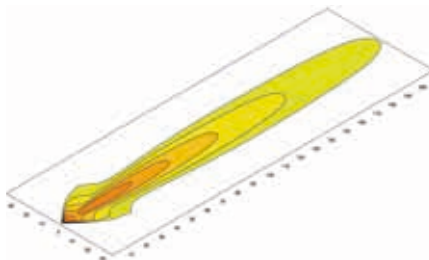
## Long-range illumination



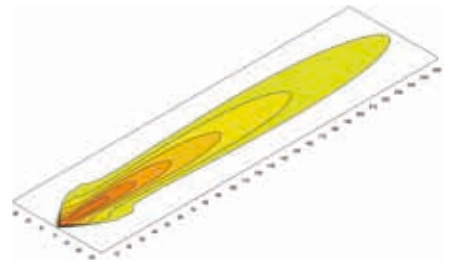
1GA 357 109-012



1GA 357 109-211



1GA 357 109-041



1GA 357 109-231



# PROGRAM OVERVIEW

Product Image	Variant	Light Function	Light Output	Power Consumption	Part Number	PU*
	HELLA VALUEFIT R2100	Close-range illumination	2,100 lm	21 W	<b>1G0 357 109-101</b>	1
	HELLA VALUEFIT R2100 2.0	Close-range illumination Position light: white or amber	2,100 lm	29 W	<b>1G0 357 109-111</b>	1
		Close-range illumination	3,000 lm	31 W	<b>1GA 357 109-002</b>	1
	HELLA VALUEFIT S3000	Long-range illumination	3,400 lm	31 W	<b>1GA 357 109-012</b>	1
		Close-range illumination (amber)	2,200 lm	25 W	<b>1GA 357 109-022</b>	1
	HELLA VALUEFIT S3000 2.0	Close-range illumination Position light: white or amber	3,000 lm	38 W	<b>1GA 357 109-031</b>	1
		Long-range illumination Position light: white or amber	3,000 lm	38 W	<b>1GA 357 109-041</b>	1
	HELLA VALUEFIT S5000	Close-range illumination	5,000 lm	47 W	<b>1GA 357 109-201</b>	1
		Long-range illumination	5,000 lm	47 W	<b>1GA 357 109-211</b>	1
	HELLA VALUEFIT S5000 2.0	Close-range illumination Position light: white or amber	5,000 lm	66 W	<b>1GA 357 109-221</b>	1
		Long-range illumination Position light: white or amber	5,000 lm	66 W	<b>1GA 357 109-231</b>	1

\* Packaging unit