



BRIEF INFORMATION

Power Beam S-series reverse lamp & Module 70 S-series reverse lamp

- › Halogen replacement series
- › Longer life and higher efficiency compared to halogen
- › Low weight and high corrosion resistance
- › ADR / GGVSEB certified for the transport of dangerous goods

PRODUCT FEATURES

The Power Beam S-series and Module 70 S-series reverse lamps from FORVIA HELLA set new standards for LED reverse lamps. These rectangular and round reverse lamps offer an outstanding price-performance ratio and are also very versatile. The slim and universal designs make it easy to switch from halogen to LED technology and enable a 1:1 conversion of existing halogen devices.

The LED reverse lamps stand out due to their long lifetime and high efficiency thanks to their outstanding lumen/watt output. Reliable overheating protection thanks to efficient cooling fin design and integrated thermal management ensures safe use between -40 °C and +85 °C.

The homogeneous illumination with a light colour similar to daylight at a colour temperature of 5,000 Kelvin ensures pleasant visibility and safe manoeuvring even in the dark. The housing and cover lenses are made of special plastics with high corrosion resistance and a lightweight design.

The lamps are ADR/GGVSEB-approved which means they are suitable for the transport of dangerous goods. They are completely dust and waterproof and high-pressure jet cleaner resistant in accordance with IP 6K7 and IP 6K9K. Upright and pendant mounting is possible.

The S-series reverse lamps are produced in Austria according to the state of the art and fulfil the highest EMC requirements for providing a reliable solution for demanding lighting requirements.

TECHNICAL DETAILS

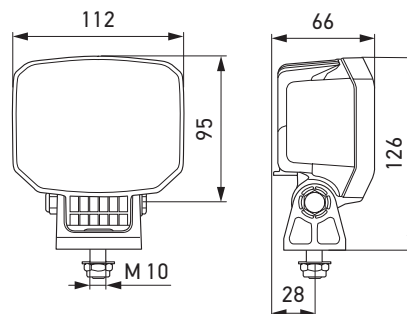
Technical data

	Power Beam S-series r. l.	Module 70 S-series r. l.
Operating voltage range	Multi-voltage (9 – 32 V)	
Rated voltage	12 V and 24 V	
Current consumption	12 V: Ø 0.85 A* 24 V: Ø 0.41 A**	
Power consumption	12 V: Ø 11.2 W* 24 V: Ø 11.6 W**	
Light output (warm)	Ø 1,150 lm	
Light source	LED	
Colour temperature	5,000 K	
Material	Housing: heat-conductive plastic Cover lens: impact-resistant plastic	
	Bracket: glass-fibre reinforced plastic	Bracket: stainless steel
Weight	398 g	229 g
Temperature range	-40 °C to +85 °C (overheating protection)	
Protection class	IP 6K7, IP 6K9K	
Approved	ECE-R10, ECE-R148, ADR / GGVSEB	
Compliant	RCM, CISPR 25 Class 5 (12 V) and Class 4 (24 V)	
Protection	Polarity reversal protection, overvoltage protection	
Salt spray resistance	720 h acc. to DIN EN ISO 9227	
Mounting	Upright and pendant mounting	
Connection	DEUTSCH DT connector	
Manufactured in	Austria	

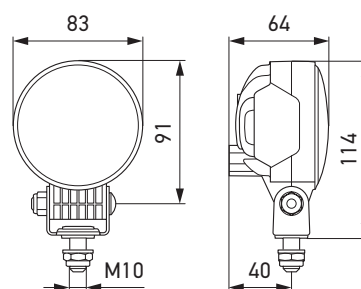
* Warm measured at 13.2 V after 30 minutes of operation.

** Warm measured at 28 V after 30 minutes of operation.

Dimensional sketch

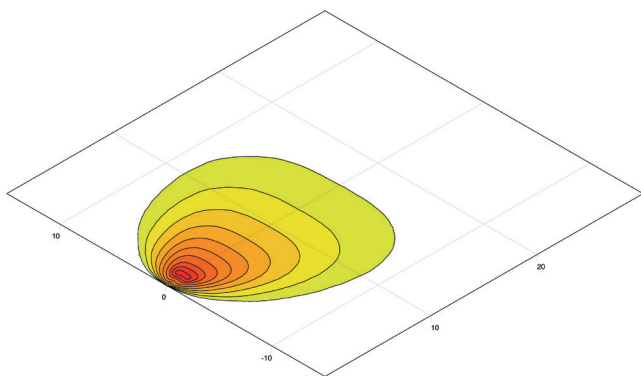


Power Beam S-series reverse lamp

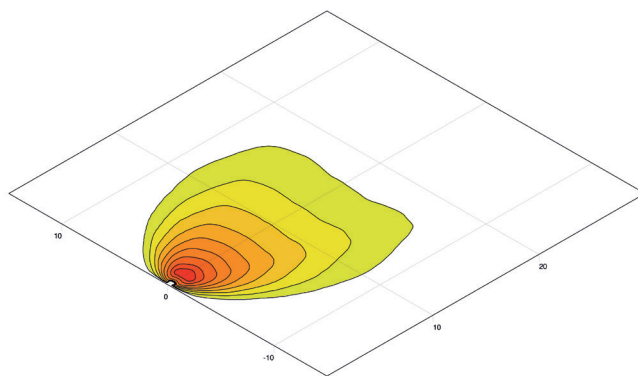


Module 70 S-series reverse lamp

LIGHT DISTRIBUTION



Extra-wide illumination | Power Beam S-series reverse lamp





Extra-wide illumination | Module 70 S-series reverse lamp

lux >= 0 1 2 4 8 16 32 64 128

Mounting position: 1.2 m high at -27° (Power Beam S-series reverse lamp) or -26° (Module 70 S-series reverse lamp)

PROGRAM OVERVIEW

Product picture	Variant	Illumination	Part number
	Power Beam S-series reverse lamp	Extra-wide illumination	2ZR 996 588-501
	Module 70 S-series reverse lamp	Extra-wide illumination	2ZR 996 776-501