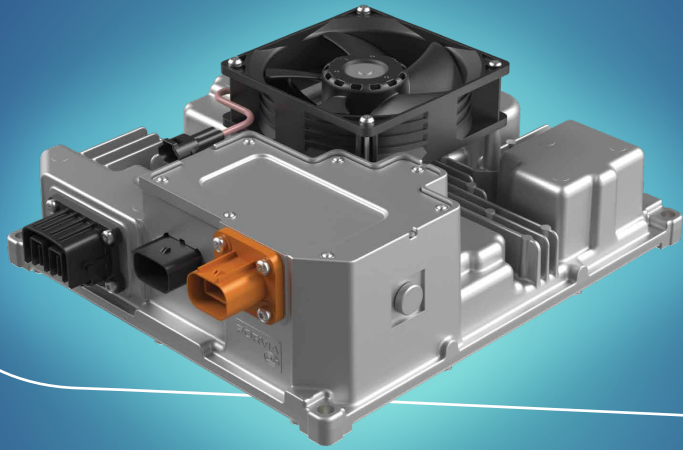


ON-BOARD CHARGER 3kW

85V – 270VAC / O/P 54V / 56.5 A



Upgrade your charging experience with our state-of-the-art 3kW On-Board Charger—designed for electric Three Wheelers.

Engineered in India, this compact yet powerful charger ensures seamless and efficient charging, even in the toughest conditions.

Experience effortless, on-the-go charging with cutting-edge technology, superior efficiency, and rugged reliability. Power up with confidence—wherever the road takes you!

FORVIA


ON BOARD CHARGER 3kW

85V – 270VAC /O/P 54V / 56.5 A

Specifications

Values

• Input Voltage Range	85V AC to 270VAC
• Input Frequency Range	45Hz to 55Hz
• Input Current	15 AC rms
• Input Inrush Current (Peak)	30A AC rms
• Output Power	3000W
• Output Voltage	54 +/- 0.5V
• Output Current	56.5 A @ 53.5 V DC
• Power Factor	99%
• Efficiency	94% at Full Load
• SW Implementation	Digital Controls
• Mode of Communication	CAN 2.0B
• Charge ON Profile	Soft Start
• Connector	Customer Proposed
• Ingress Protection	IP67
• Size	330 * 270 * 95 (Indicative)
• Thermal Packaging	Forced Cooling (FAN + heatsink)
• Applicable Regulations	AIS 138, IS17017, AIS 038
• Applicable Standards	AIS004, IS61851 -21
• Storage Temperature	-25 °C to 105 °C
• Operating Temperature	-25°C to 55 °C
• Output Current Ripple	<5%
• Output Voltage Ripple	<5%
• Line Regulation (Variation w.r.t input)	<5%
• Load Regulation (Variation w.r.t Output)	<5%
• Error Input Voltage Sensing	1% F.S.R
• Error Output Voltage Sensing	1% F.S.R
• Error Input Current Sensing	1% F.S.R
• Error Output Current Sensing	1% F.S.R
• Protection	Input Over Voltage, Under Voltage Over current Output Over Voltage, Under Voltage Over Current, Under Current Reverse Current Protection Output Short Circuit PCB Over Temperature Over - Load Protection

