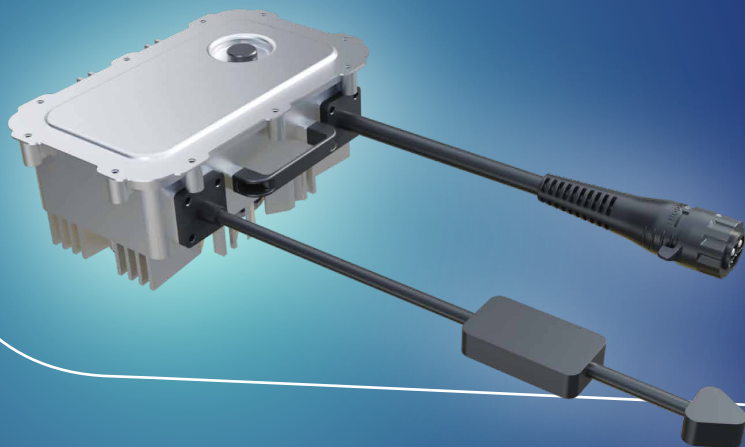


950W OFF BOARD CHARGER

100- 270VAc @O/P 58.2V / 17A



Experience hassle-free charging with our 950W Off-Board Charger, designed for electric two wheelers. Built for efficiency and durability, this compact and powerful charger ensures quick and reliable charging, even in demanding environments.

Delivering fast, safe, and reliable charging, the 950W Off-Board Charger is the perfect solution for efficient power management.

FORVIA


950W OFF BOARD CHARGER

100- 270VAC @O/P 58.2V / 17A

Parameter	Values
Type of battery charger	Off-board charger, Portable.
Charging temperature range of battery	-10°C to 55°C
Rated input voltage	110 & 230 V AC
AC input voltage range	100 to 270 V RMS
Nominal input frequency	60 & 50 Hz
Input frequency range	47 to 63 Hz
Power factor	0.98 min.
Maximum input current	6.5 A
Input Surge current	100 A (duration to be updated)
Number of phase	1 Phase (L, N and Earth)
Output DC voltage under no load condition	58.2+0.2V, OCV
Charging pattern	CC-CV
Rated output current	17A+0.5A
Rated power	950 W
Efficiency at all load conditions	94% min.
LED indication	For malfunction & Normal Condition operation
Ingress Protection	IP 65
Dimensions *	280mmX110mmX65mm*
Protections	Input /O/P under voltage Input/ O/P over voltage Over Temperature Short circuit Over current Reverse current flow protection
Communication	CAN 2.0B CAN Flashing for field updates