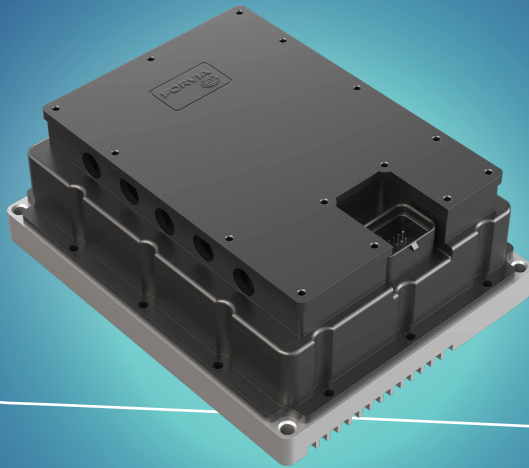


# 2W Motor Controllers

48V / 6 kW Motor Controller



Designed and developed in India, the L2 Motor Controller is engineered for high-performance electric vehicles, delivering advanced features, precise motor control, and seamless power management. With customizable current limits and scalable power options (5kW–8kW), it ensures a smooth, efficient, and safe ride under all conditions.

Experience next-level motor control with superior efficiency, intelligent protection, and advanced customization. The L2 Motor Controller is the perfect solution for high-performance EVs, delivering reliability and precision on every drive



# 2W MOTOR CONTROLLERS

48V / 6 KW MOTOR CONTROLLER

## Parameter

## Specifications

• Operating voltage	30 to 60V
• Nominal	51.2V
• Motor type	PMSM/BLDC/IM
• Motor position Feedback	Hall / Analog Sin-cos/ UVW
• Control Strategy	FOC with Field Weakening
• Maximum Electrical Frequency	500Hz
• Peak Current	300Arms (2min boost)
• Continuous 60 min current	120Arms
• Efficiency	> 95 %
• Cooling Type	Air Cooled
• Operating Temperature	- 5 to 55 °C
• Dimension (LxWxH)	205 X125X70 mm (under development)
• Weight	<2kg
• No. of Drive modes Supported	3
• Component qualification	AEC
• CAN for vehicle integration(CAN 2.0B)	Yes
• Regeneration ( CAT A / CAT B )	Configurable braking current
• Safety	Reverse polarity protection
	Short Circuit protection
	Thermal cutback warning and shutdown for motor and controller
	Ingress Protection IP67
	Vibration : 5g as per ISO 16750
	Voltage withstand : 500Vrms/60Hz
	Insulation Resistance: >10Mohm/ 500Vdc