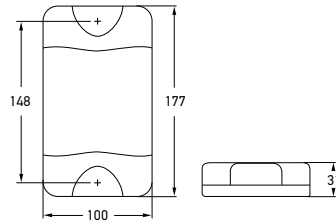


DuraLED® Stop/Rear Position Lamp with Night Light

DuraLED® stop, rear position lamp featuring Enhanced Definition Technology (EDT) for increased safety and awareness. Night light function allows illumination of the rear position lamp independently from the remaining marker lamps on the vehicle. Features HELLA Ultra Wide Visibility Optics for significantly improved side visibility.



2330-V	2SB 959 060-251		
Mounting	Two hole surface mount with mounting bushes supplied. Suitable for vertical mounting.		
Voltage	Multivolt™ for optimum brightness at input voltages from 9 to 33 volts		
Power Consumption	Stop: 6W	Rear position: 2.5W	Night: 2.5W
Protection	Reverse polarity and 5000 watt Transient Voltage Suppressor (TVS) IP 6K6 (Protection against dust and high-pressure water jets) IP 6K7 (Protection against dust and temporary water immersion)		
Cable Length	Pre-wired with 2.5m of sheathed multi-core cable		
Compliance	ADR 49/00	E24 5850	ECE R7/02

See page 76 for DuraLED® accessories.

DuraLED® Rear Direction Indicator Lamp

DuraLED® rear direction indicator lamp for trucks, buses, caravans and trailers. Features HELLA Ultra Wide Visibility Optics for significantly improved side visibility.



2151-V	2BA 959 070-251		
2151-VCS	2BA 980 607-501		HCS TECHNOLOGY
Mounting	Two hole surface mount with mounting bushes supplied. Suitable for vertical mounting.		
Voltage	Multivolt™ for optimum brightness at input voltages from 9 to 33 volts		
Power Consumption	2151-V	6W	
	2151-VCS	4W	
Protection	Reverse polarity and 5000 watt Transient Voltage Suppressor (TVS) IP 6K6 (Protection against dust and high-pressure water jets) IP 6K7 (Protection against dust and temporary water immersion)		
Cable Length	Pre-wired with 2.5m of sheathed multi-core cable		
Compliance	ADR 6/00: Cat 2a	E24 5850	ECE R6/01
		ISO 13207-1 (2151-VCS only)	

See page 276 for further information on HCS Technology and ISO 13207-1.

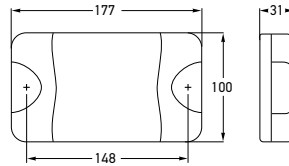
DuraLED® Reversing Lamp

DuraLED® reversing lamp for trucks, buses, caravans and trailers.



1430-V	2ZR 959 070-551		
Mounting	Two hole surface mount with mounting bushes supplied. Suitable for vertical mounting.		
Voltage	Multivolt™ for optimum brightness at input voltages from 9 to 33 volts		
Power Consumption	4W		
Protection	Reverse polarity and 5000 watt Transient Voltage Suppressor (TVS) IP 6K6 (Protection against dust and high-pressure water jets) IP 6K7 (Protection against dust and temporary water immersion)		
Cable Length	Pre-wired with 2.5m of sheathed multi-core cable		
Compliance	ADR 1/00	E24 5850	ECE R23/00

Reversing lamps are not designed for continuous operation.



2330-H	2SB 959 060-351	
2330-HBL	2SB 959 060-352	BLISTER PACK
Mounting	Two hole surface mount with mounting bushes supplied. Suitable for horizontal mounting.	
Voltage	Multivolt™ for optimum brightness at input voltages from 9 to 33 volts	
Power Consumption	Stop: 6W	Rear position: 2.5W Night: 2.5W
Protection	Reverse polarity and 5000 watt Transient Voltage Suppressor (TVS) IP 6K6 (Protection against dust and high-pressure water jets) IP 6K7 (Protection against dust and temporary water immersion)	
Cable Length	Pre-wired with 2.5m of sheathed multi-core cable	
Compliance	ADR 49/00	E24 5850 ECE R7/02

See page 76 for DuraLED® accessories.

DuraLED® Stop/Rear Position Lamp with Night Light

DuraLED® stop, rear position lamp featuring Enhanced Definition Technology (EDT) for increased safety and awareness. Night light function allows illumination of the rear position lamp independently from the remaining marker lamps on the vehicle. Features HELLA Ultra Wide Visibility Optics for significantly improved side visibility.



2330-HBL



2151-H	2BA 959 070-351	
2151-HBL	2BA 959 070-352	BLISTER PACK
2151-HCS	2BA 980 607-001	HCS TECHNOLOGY
Mounting	Two hole surface mount with mounting bushes supplied. Suitable for horizontal mounting.	
Voltage	Multivolt™ for optimum brightness at input voltages from 9 to 33 volts	
Power Consumption	2151-H/...-HBL/...-HBULK 6W	2151-HCS 4W
Protection	As per Part No. 2330-H	
Cable Length	Pre-wired with 2.5m of sheathed multi-core cable	
Compliance	ADR 6/00: Cat 2a	E24 5850 ISO 13207-1 (2151-HCS only)

See page 276 for further information on HCS Technology and ISO 13207-1.

DuraLED® Rear Direction Indicator Lamp

DuraLED® rear direction indicator lamp for trucks, buses, caravans and trailers. Features HELLA Ultra Wide Visibility Optics for significantly improved side visibility.



2151-HBL

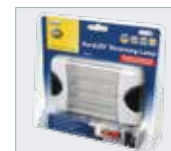


1430-H	2ZR 959 070-501	
1430-HBL	2ZR 959 070-502	BLISTER PACK
Mounting	Two hole surface mount with mounting bushes supplied. Suitable for horizontal mounting.	
Voltage	Multivolt™ for optimum brightness at input voltages from 9 to 33 volts	
Power Consumption	4W	
Protection	As per Part No. 2330-H	
Cable Length	Pre-wired with 2.5m of sheathed multi-core cable	
Compliance	ADR 1/00	E24 5850 ECE R23/00

Reversing lamps are not designed for continuous operation.

DuraLED® Reversing Lamp

DuraLED® reversing lamp for trucks, buses, caravans and trailers.



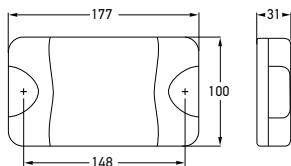
1430-HBL

DuraLED® Stop/Rear Position Lamp with Night Light

DuraLED® stop, rear position lamp featuring Enhanced Definition Technology (EDT) for increased safety and awareness. Night light function allows illumination of the rear position lamp independently from the remaining marker lamps on the vehicle.



2330BL



2330	2SB 959 060-001	
2330BL	2SB 959 060-002	BLISTER PACK
2330BULK	2TA 959 060-011	PACK OF 4
Mounting	Two hole surface mount with mounting bushes supplied. Suitable for horizontal or vertical mounting.	
Voltage	Multivolt™ for optimum brightness at input voltages from 9 to 33 volts	
Power Consumption	Stop: 6W Rear position: 1W Night: 1W	
Protection	Reverse polarity and 5000 watt Transient Voltage Suppressor (TVS) IP 6K6 (Protection against dust and high-pressure water jets) IP 6K7 (Protection against dust and temporary water immersion)	
Cable Length	Pre-wired with 2.5m of sheathed multi-core cable	
Compliance	ADR 49/00	

See page 76 for DuraLED® accessories.

DuraLED® Rear Direction Indicator Lamp

DuraLED® rear direction indicator lamp for trucks, buses, caravans and trailers.



2151BL



2151	2BA 959 070-011	
2151BL	2BA 959 070-012	BLISTER PACK
2151BULK	2BA 959 070-027	PACK OF 4
Mounting	Two hole surface mount with mounting bushes supplied. Suitable for horizontal or vertical mounting.	
Voltage	Multivolt™ for optimum brightness at input voltages from 9 to 33 volts	
Power Consumption	9W	
Protection	Reverse polarity and 5000 watt Transient Voltage Suppressor (TVS) IP 6K6 (Protection against dust and high-pressure water jets) IP 6K7 (Protection against dust and temporary water immersion)	
Cable Length	Pre-wired with 2.5m of sheathed multi-core cable	
Compliance	ADR 6/00: Cat 2a	