



BRIEF INFORMATION

Module 50 LED spot

- Compact warning light- improves the operational safety
- Creates a bright warning spot on the ground
- Innovative LED lens technology
- Available in various colours

PRODUCT FEATURES

The Module 50 LED spot is a new version of the already introduced Module 50 series from HELLA. These headlamps are used as warning lights to visually warn other vehicles or pedestrians about an oncoming vehicle. This significantly increases occupational safety and helps to prevent accidents.

The light technicians from HELLA have developed a special lens optic, which sharply focuses the colour LED light beams to project a circle-shaped warning point on the ground. This application is suitable for a wide variety of areas including forklifts for example. Due to its compact dimensions, the Module 50 LED is particularly well-suited for installation situations where there is little space.

Along with its compact dimensions, the advantages of the Module 50 LED also include high energy efficiency. Its power consumption of only 15 watts makes this worklight ideal for

use on battery-powered vehicles or on vehicles where the alternator is already under a heavy load.

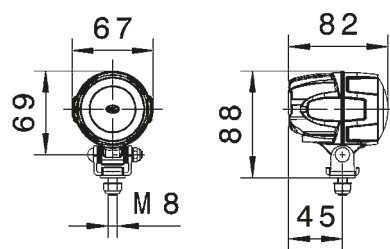
The integrated electronics protect the device in the event of polarity inversion and ensure constant brightness, even when the operating voltage fluctuates between 9 and 52 volts. This makes it possible to use in vehicles with 12, 24 or 48 volt vehicle electric system voltage and ensures safe work.

The black housing of the worklight is made of lightweight, yet durable aluminum and incorporates cooling fins. This ensures the necessary heat dissipation of the high-performance multi-chip LED. Additionally, a temperature sensor protects the worklight from overheating.

TECHNICAL DETAILS

Technical data	
Operating voltage / Rated voltage	9 – 52 V
Light source type	1 coloured high-power LED
Power consumption	15 W
Housing	Die cast aluminum
Connection	DEUTSCH connector
Mounting	Upright and pendant
Protective	Overheating and polarity reversal protection
Protective class	IP 6K9K and IP 6K8
Type approval	Ⓜ, ECE-R10
Weight	340 g
Manufactured in	Austria

Dimensional sketch



RANGE OVERVIEW

1G0 995 050-...	-051	-061	-071	-081
Voltage	9 – 52 V	9 – 52 V	9 – 52 V	9 – 52 V
Spot illumination	X	X	X	X
Connection	DT connector	DT connector	DT connector	DT connector
Mounting, upright	X	X	X	X
Mounting, pendant	X	X	X	X
Bracket width	27 mm	27 mm	27 mm	27 mm
Other features/colour	White	Blue	Green	Red

Illumination

