

2. Purpose and scope

2.1 Validity

The HELLA Norm HN26112 applies to all HELLA companies worldwide, as well as external suppliers and service providers.

2.2 General

Every day, we face the challenge of fulfilling our customers' highest expectations and wishes. HELLA packaging is regarded by the consumer as a sales unit and used for transport or storage until the goods are used. HELLA packaging supports the brand and it protects the product from its origins to the customer. A distinction is made between product and dispatch boxes. HELLA uses a clearly defined module system for product and dispatch boxes.



An appearance according to the HELLA Corporate Design is mandatory. Different designs are used depending on the size of the product box. Packaging with advertising statements is subject to the requirements of the HELLA standard on packaging design.

HELLA product boxes can be designed as individual, multi-pack or range packaging variants. Depending on the size, weight and protection of the product to be packed, solid cardboard or corrugated cardboard boxes are used. Secure locking must be ensured for transport and handling. The packaging must have a HELLA label inc. EAN code attached to it in accordance with the present HELLA Norm. In the case of multi-packs, the respective quantity must be indicated on the label. The marking of the country of origin, "Made in" (country of origin), is effected exclusively on the label.

All packaging, labels and other packaging materials (including products) must be made available for initial sample inspection. Each sampling must be accompanied by an initial sample inspection report: Initial sample inspection forms can be requested from the Product Manager. HELLA Quality Management is responsible for releasing the sample! Later changes to the packaging material/layout used are subject to repeated inspection and thus release by HELLA Product Management. Unreleased deliveries are refused.

All requirements on the use of packaging and labels as well as the design are subject to HELLA Product Management specifications. Printing data for HELLA standard cardboard boxes are available in digital form and can be made available by HELLA Product Management.

If the use of packaging deviating from the HELLA modular system is required, e.g. for reasons of product geometry, the design of the packaging is executed according to the HELLA Norm on packaging design. A release by HELLA is always required.

Likewise, all deviations from this HELLA Norm require a release by HELLA Product Management.

3. Normative references

DIN 14053	Packagings manufactured from corrugated or solid fibreboard
DIN 14054	Paper and paperboard packaging - Design of cartons.
DIN 55468	Packaging materials - Corrugated board - Part 1: Requirements
HP-C-527	ESD Control Program Plan - Electrostatic discharge (ESD) - protection of components, assemblies and systems at risk from electrostatic interference
HF-5532_GH	Packaging Data Sheet for Sales Items gemeint
HN26114	Supply Guideline Aftermarket (HKG)
DIN EN 22248	Packaging; complete, filled transport packages; vertical impact test by dropping (ISO 2248:1985); german version EN 22248:1992

4. Abbreviations

Pantone	international color matching system
HKS	color fan for so-called basic and full tone spot colors
A	Outer dimension
I	inner dimension
FBD	Folding box with base and lid closure flaps
FAE	Folding box with auto-lock bottom and insert lid (possibly with safety closure)
W	Folding box made of corrugated cardboard
V	Folding box made of solid cardboard
UD2	Material type / key
GD2	Material type / key
HELLA – D	Name of a HELLA box layout
HELLA – G	Name of a HELLA box layout
FEFCO	Fédération Européenne des Fabricants de Carton Ondule European Corrugated Packaging Association
VH	Capitals height

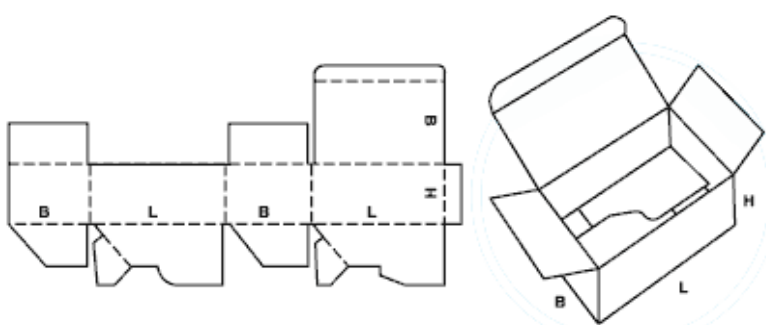
5. Cardboard Boxes

5.1 Requirements on HELLA product boxes

HELLA product boxes are designed according to the international standards DIN EN 14053 and DIN EN 14054 (FEFCO Standard).

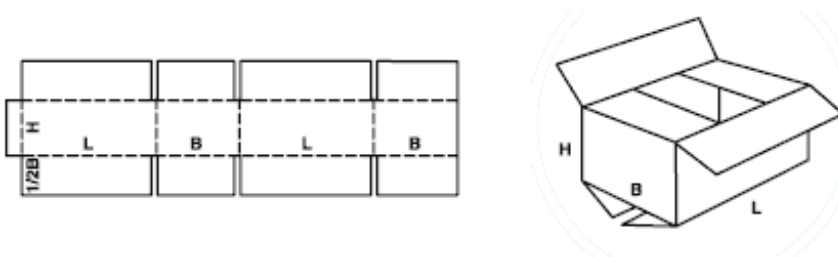
5.1.1 Type of Box

The packaging concepts used are either packaging with auto-lock bottom or packaging with top and bottom closure flaps.



FEFCO Norm 0713

Box
With auto-lock bottom and insert lid
(possibly with safety closure)



FEFCO Norm 0201

Box
With top and bottom closure flaps

Respective variants incl. specified label size must be used based on the product dimensions. See section 8.1.

Important Note: In case of deviations, a release by the HELLA Product Management is required.

5.1.2 Design

Different design variant are to be used depending on the size of the product boxes.



Design: HELLA - G
Print: yellow, printed on the entire surface (HKS 4)
HELLA logo blue (Pantone 2955 C)



Design: HELLA - D
Print: yellow, printed on the entire surface (HKS 4)
HELLA logo / name, blue (Pantone 2955 C)

Print data can be requested from HELLA Product Management

5.1.3 Material

For product boxes, mainly solid cartons, qualities 700 g/m², 550 g/m² and 350g/m² in UD2 and/or GD2 are used.

Lamination is uncoated duplex board, printed side white, made to 100% of recycled paper Bogus paper (Schrenz) made of 100% recycled paper does not meet quality requirements and is not desired for cardboard boxes

Product boxes with increased requirements on stability are made from corrugated cardboard, either B- or E-flute. Here, the following material requirements apply:



1.40 or 1.30 B-flute
1.20 E-flute



Flute type	Flute code	Flute pitch t	Flute height h
Fine corrugation	B	5.5 - 6.5 mm	2.2 - 3.0 mm
Fine corrugation	E	3.0 - 3.5 mm	1.0 - 1.8 mm

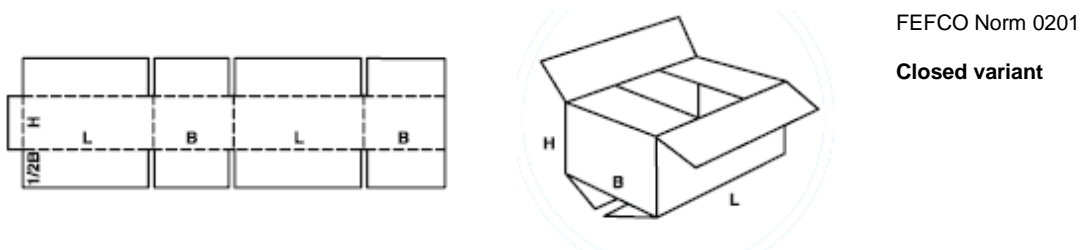
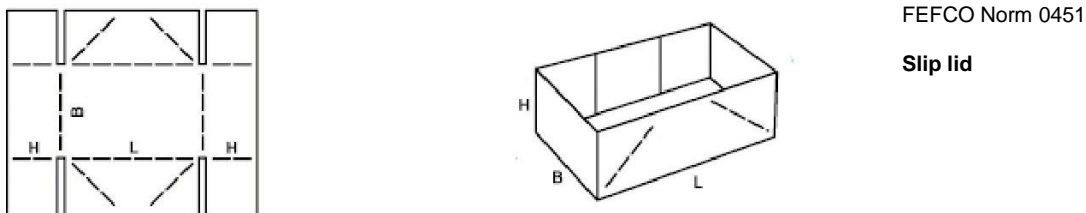
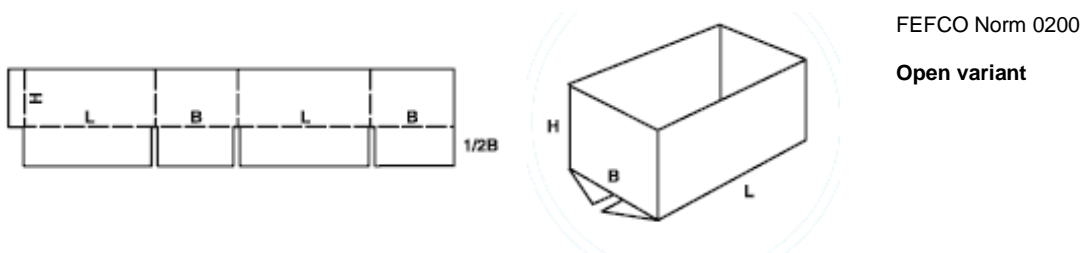
Flute type	Burst ratio KPA (DIN 55468)	Puncturing energy J (DIN 55468)	Edge crush resistance kN/m (DIN 55468)
1.20	850	3.5	4.0
1.30	1,100	4.0	4.5
1.40	1,350	4.5	5.5

5.2 Requirements on HELLA dispatch boxes

HELLA dispatch boxes are designed according to the international Standards DIN EN 14053 and DIN EN 14054 (FEFCO Standard).

5.2.1 Type of box

In dispatch boxes a distinction is made between an open box with bottom closure flaps (possibly with slip lid) and a closed box with top and bottom closure flaps



On the basis of the dimensions of the product boxes, respective variants of the dispatch packaging and the belonging labels can be used.

Important Note: In case of deviations, a release by the HELLA Product Management is required.

5.2.2 Design

Brown boxes are exclusively used as dispatch boxes. HELLA - D design dispatch boxes may also be used as product packaging if this is necessary due to the product size.



Dispatch box
open variant
with slip lid

Print: blue HELLA logo
(Pantone 2955 C)

Print data can be requested from HELLA Product Management

5.2.3 Material

The material to be used is corrugated cardboard with the following material specifications:



2.30 or 2.50 BC-flute

Flute type	Flute code	Flute pitch t	Flute height h
Medium Wave	C	6.8 - 7.9 mm	3.2 - 3.9 mm
Fine corrugation	B	5.5 - 6.5 mm	2.2 - 3.0 mm

Flute type	Burst ratio KPA (DIN 55468)	Puncturing energy J (DIN 55468)	Edge crush resistance kN/m (DIN 55468)
2.30	1,100	6.5	7.0
2.50	1,600	8.5	8.5

6. HELLA Packaging System

Two module systems are available for the determination of the correct product box and the respective dispatch box. If optimal packaging cannot be found within these systems, a box will be determined in agreement with HELLA Product Management.

6.1 Module System I

6.1.1 Product boxes in Module System I



Outer dimension of the HELLA - D product boxes (mm):

Length	Width	Height	Dimension	Version / FEFCO	Quality / Requirements	Material	Label	HELLA KGaA material number
83	57	190	A	FAEF0713	550g/m ² UD2	V	75x50	485 138-45
95	47	250	A	FAEF0713	550g/m ² UD2	V	60x27	485 078-45
114	95	334	A	FAEF0713	700g/m ² UD2	V	75x50	485 059-45
125	44	380	A	FAEF0713	550g/m ² UD2	V	60x27	485 038-45
127	57	500	A	FAEF0713	550g/m ² UD2	V	75x50	485 019-45
127	95	250	A	FAEF0713	550g/m ² UD2	V	75x50	485 098-45
143	95	125	A	FAEF0713	550g/m ² UD2	V	75x50	485 148-45
143	127	167	A	FAEF0713	550g/m ² UD2	V	75x50	485 146-45
143	127	334	A	FAEF0713	700g/m ² UD2	V	75x50	485 056-45
143	127	500	A	FAEF0713	700g/m ² UD2	W	75x50	485 018-45
167	44	380	A	FAEF0211	700g/m ² UD2	W	60x27	485 037-45
167	114	380	A	FAEF0713	1.20 E	W	75x50	485 036-45
167	125	380	A	FAEF0713	1.20 E	W	75x50	485 012-45
190	50	570	A	FAEF0211	700g/m ² UD2	V	60x27	485 016-45
190	63	380	A	FAEF0713	700g/m ² UD2	W	75x50	485 039-45
190	76	334	A	FAEF0713	700g/m ² UD2	V	75x50	485 058-45
190	95	250	A	FAEF0713	700g/m ² UD2	V	75x50	485 079-45
190	114	125	A	FAEF0713	550g/m ² UD2	V	75x50	485 136-45
190	114	250	A	FAEF0713	700g/m ² UD2	V	75x50	485 088-45
190	143	125	A	FAEF0713	700g/m ² UD2	V	75x50	485 109-45
190	143	167	A	FAEF0713	700g/m ² UD2	V	75x50	485 127-45
190	143	250	A	FAEF0713	700g/m ² UD2	V	75x50	485 086-45
190	143	500	A	FAEF0713	1.40 B	W	75x50	485 013-45
190	167	570	A	FAEF0713	1.40 B	W	75x50	485 003-45
190	190	84	A	FAEF0713	700g/m ² UD2	V	75x50	485 125-45
190	190	100	A	FAEF0713	700g/m ² UD2	V	75x50	485 124-45
190	190	125	A	FAEF0713	700g/m ² UD2	V	75x50	485 123-45
190	190	167	A	FAEF0713	700g/m ² UD2	V	75x50	485 122-45
190	190	250	A	FAEF0713	700g/m ² UD2	V	75x50	485 083-45
285	76	250	A	FAEF0713	700g/m ² UD2	V	75x50	485 075-45
285	127	250	A	FAEF0713	700g/m ² UD2	V	75x50	485 071-45
285	127	500	A	FAEF0713	1.40 B	W	75x50	485 017-45
285	190	100	A	FAEF0713	700g/m ² UD2	V	75x50	485 074-45
285	190	125	A	FAEF0713	700g/m ² UD2	V	75x50	485 073-45
285	190	167	A	FAEF0713	700g/m ² UD2	V	75x50	485 072-45
285	250	190	A	FAEF0713	1.40 B	W	75x50	485 061-45
380	190	167	A	FAEF0713	1.40 B	W	75x50	485 029-45
380	250	190	A	FAEF0713	1.40 B	W	75x50	485 048-45

- A:** Outer dimension
- FBD:** Folding box with top and bottom closure flaps
- FAE:** Folding box with auto-lock and insert lid (possibly with safety closure)
- W:** Folding box made of corrugated cardboard
- V:** Folding box made of solid cardboard

Product boxes must be closed with transparent adhesive tape!

6.1.2 Dispatch boxes in Module System I



Inner dimensions of dispatch boxes in mm:

Length	Width	Height	Dimension	Version / FEFCO	Quality / Requirements	Material	Label	HELLA KGaA material number
Open variant with slip lid								
580	380	505	I	FAEF0200	2.30 BC	W	75 x 50	487 015-40
Slip lid:								
599	395	100	I	FAEF0451	1.40 B	W	75 x 50	486 022-17
580	380	340	I	FAEF0200	2.30 BC	W	75 x 50	487 016-40
Slip lid:								
599	395	100	I	FAEF0451	1.40 B	W	75 x 50	486 022-17
580	380	256	I	FAEF0200	2.30 BC	W	75 x 50	487 015-40
Slip lid:								
599	395	100	I	FAEF0451	1.40 B	W	75 x 50	486 022-17
Closed variant								
575	380	500	I	FBDF0201	2.30 BC	W	75 x 50	487 015-00
575	380	334	I	FBDF0201	2.30 BC	W	75 x 50	487 016-00
575	380	250	I	FBDF0201	2.30 BC	W	75 x 50	487 017-00
Alternative variants:								
475	285	500	I	FBDF0201	2.30 BC	W	75 x 50	487 020-00
580	475	500	I	FBDF0201	2.30 BC	W	75 x 50	487 010-00
955	575	500	I	FBDF0201	2.30 BC	W	75 x 50	487 000-00

- I:** Inner dimension
- FBD:** Folding box with bottom and top closure flaps
- FAE:** Folding box with auto-lock and insert lid (possibly with safety closure)
- W:** Folding box made of corrugated cardboard

6.1.3 Capacity table for Module System I



Product boxes HELLA - D



Brown dispatch boxes

Product box - D			Quantity in dispatch box		
HELLA KGaA material number	Dimensions in mm L x W x H	Design	487 015-40/-00 595x395x520 = A 580x380x505 = I	487 016-40/-00 595x395x355 = A 580x380x340 = I	487 017-40/-00 595x395x271 = A 580x380x256 = I
485 148-45	143 x 95 x 125	HELLA - D	64	-	32
485 146-45	143 x 127 x 167	HELLA - D	36	24	-
485 138-45	83 x 57 x 190	HELLA - D	120	80	60
485 136-45	190 x 114 x 125	HELLA - D	40	-	20
485 109-45	190 x 143 x 125	HELLA - D	32	-	16
485 127-45	190 x 143 x 167	HELLA - D	24	16	-
485 125-45	190 x 190 x 84	HELLA - D	36	24	18
485 124-45	190 x 190 x 100	HELLA - D	30	-	-
485 123-45	190 x 190 x 125	HELLA - D	24	-	12
485 122-45	190 x 190 x 167	HELLA - D	18	12	-
485 078-45	95 x 47 x 250	HELLA - D	96	-	48
485 098-45	127 x 95 x 250	HELLA - D	36	-	18
485 079-45	190 x 95 x 250	HELLA - D	24	-	12
485 088-45	190 x 114 x 250	HELLA - D	20	-	10
485 086-45	190 x 143 x 250	HELLA - D	16	-	8
485 083-45	190 x 190 x 250	HELLA - D	12	-	6
485 071-45	285 x 127 x 250	HELLA - D	12	-	6
485 075-45	285 x 76 x 250	HELLA - D	20	-	10
485 074-45	285 x 190 x 100	HELLA - D	20	-	-
485 073-45	285 x 190 x 125	HELLA - D	16	-	8
485 037-45	167 x 44 x 38	HELLA - D	39	20	-
485 072-45	285 x 190 x 167	HELLA - D	12	8	-
485 061-45	285 x 250 x 190	HELLA - D	8	-	4
485 059-45	114 x 95 x 334	HELLA - D	-	20	-
485 056-45	143 x 127 x 334	HELLA - D	-	12	-
485 058-45	190 x 76 x 334	HELLA - D	-	15	-
485 038-45	125 x 44 x 380	HELLA - D	52	-	26
485 036-45	167 x 114 x 380	HELLA - D	15	10	-
485 039-45	190 x 63 x 380	HELLA - D	24	15	12
485 029-45	380 x 190 x 167	HELLA - D	9	6	-
485 048-45	380 x 250 x 190	HELLA - D	6	-	3
485 019-45	127 x 57 x 500	HELLA - D	30	-	-
485 018-45	143 x 127 x 500	HELLA - D	12	-	-
485 013-45	190 x 143 x 500	HELLA - D	8	-	-
485 017-45	285 x 127 x 500	HELLA - D	6	-	-
485 016-45	190 x 50 x 570	HELLA - D	20	-	10
485 003-45	190 x 167 x 570	HELLA - D	6	4	-
485 184-50	95 x 95 x 125	HELLA - G	96	-	48
485 012-45	167 x 125 x 380	HELLA - D	12	-	6

I: Inner dimension
A: Outer dimension

A filled dispatch box must not exceed the maximum weight of 20 kg (gross)!

6.2 Module System II

Product boxes in Module System II



Outer dimensions of the HELLA - G product boxes in mm:

Length	Width	Height	Dimension	Version / FEFCO	Quality / Requirements	Material	Label	HELLA KGaA material number
38	38	75	A	FAEF0713	350g/m ² UD2	V	60x27	485 192-50
47	47	125	A	FAEF0713	550g/m ² UD2	V	60x27	485 162-50
54	46	75	A	FAEF0713	350g/m ² UD2	V	60x27	485 190-50
61	46	376	A	FAEF0713	550g/m ² UD2	V	60x27	485 152-50
75	55	75	A	FAEF0713	350g/m ² UD2	V	60x27	485 188-50
92	75	75	A	FAEF0713	550g/m ² UD2	V	60x27	485 182-50
95	95	125	A	FAEF0713	550g/m ² UD2	V	75x50	485 184-50
125	92	75	A	FAEF0713	550g/m ² UD2	V	60x27	485 158-50
125	46	92	A	FAEF0713	550g/m ² UD2	V	60x27	485 186-50
125	61	138	A	FAEF0713	550g/m ² UD2	V	60x27	485 154-50
149	35	188	A	FAEF0713	550g/m ² UD2	V	60x27	485 156-50

- A:** Outer dimension
FAE: Folding box with auto-lock and insert lid (possibly with safety closure)
V: Folding box made of solid cardboard

6.2.1 Dispatch boxes in Module System II



Inner dimensions of HELLA - D dispatch boxes in mm:

Length	Width	Height	Dimension	Version / FEFCO	Quality / Requirements	Material	Label	HELLA KGaA material number
383	283	247	I	FAEF0201	2.30 C	W	75x50	487 067-05
383	283	193	I	FAEF0201	2.30 C	W	75x50	487 068-05
383	283	157	I	FAEF0201	2.30 C	W	75x50	487 069-05

- I:** Inner dimension
FAE: Folding box with auto-lock and insert lid (possibly with safety closure)
W: Folding box made of corrugated cardboard

Product boxes must be closed with transparent adhesive tape!

IMPORTANT NOTE:

Dispatch boxes which are used as individual product packaging on account of the product geometry require a high degree of product security, e.g. trays with stretch film. These boxes are suitable for direct pallet forming! No further dispatch boxes are required. When using non-HELLA-packaging, the supplier must ensure that the inner packaging protects the product according to the criteria of the drop test according to DIN EN 22248. The use of non-HELLA-packaging must be approved by HELLA Product Management!

6.2.2 Dispatch boxes, individual (dispatch boxes / product boxes)

Length	Width	Height	Dimension	Version / FEFCO	Quality / Requirements	Material	Label	HELLA KGaA material number
289	250	252	I	FAEF0201	2.30 C	W	75x50	487 070-05
483	283	247	I	FAEF0201	2.30 C	W	75x50	487 065-05
583	383	247	I	FAEF0201	2.30 C	W	75x50	487 061-05
583	251	245	I	FAEF0201	2.30 C	W	75x50	487 063-05

6.2.3 Capacity table for Module System II



Product boxes HELLA - G

Dispatch box HELLA - D

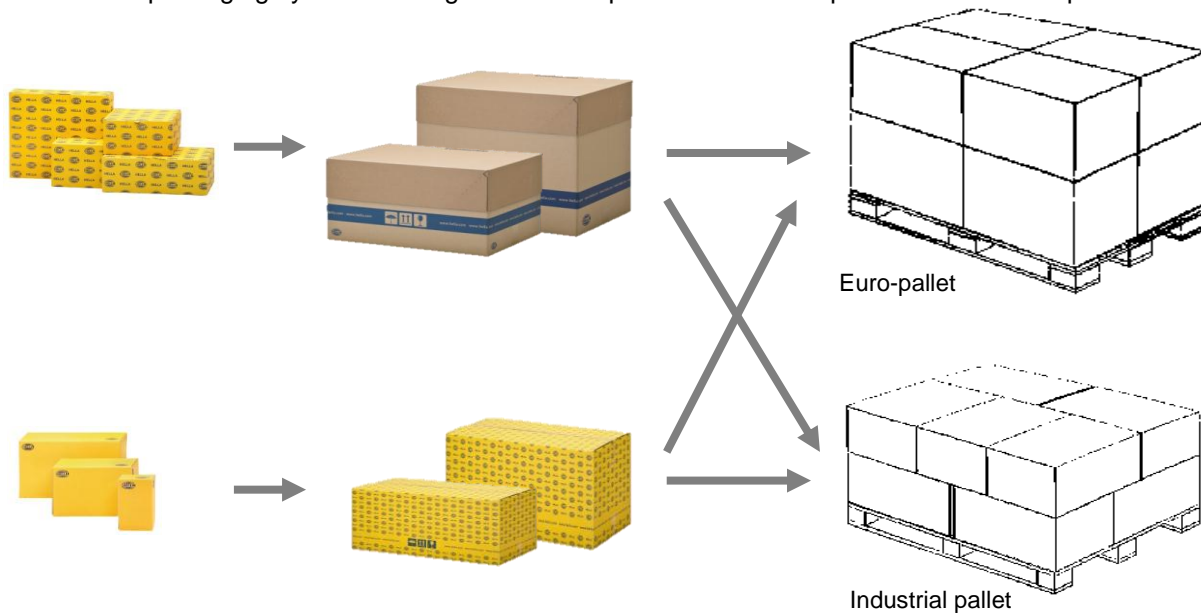
Product box HELLA - G			Quantity in dispatch box HELLA - D		
HELLA KGaA material number	Dimensions in mm L x W x H	Design	487 069--05 397x298x187 = A 383x283x157 = I	487 068--05 397x298x223 = A 383x283x193 = I	487 067--05 398x298x277 = A 383x283x247 = I
485 192-50	38 x 38 x 75	HELLA - G	140	175	210
485 190-50	54 x 46 x 75	HELLA - G	84	100	126
485 188-50	75 x 55 x 75	HELLA - G	50	-	75
485 182-50	92 x 75 x 75	HELLA - G	30	-	45
485 162-50	47 x 47 x 125	HELLA - G	54	72	90
485 158-50	125 x 92 x 75	HELLA - G	18	-	27
485 186-50	125 x 46 x 92	HELLA - G	-	36	45
485 154-50	125 x 61 x 138	HELLA - G	12	18	24
485 156-50	149 x 35 x 188	HELLA - G	16	-	-
485 152-50	61 x 46 x 376	HELLA - G	-	18	24
485 184-50	95 x 95 x 125	HELLA - G	12	-	-

I: Inner dimension
A: Outer dimension

A filled dispatch box must not exceed the maximum weight of 20 kg (gross)!

7. Pallet Loading

The HELLA packaging system is designed for the optimal use of euro-pallet and industrial pallet dimensions.



7.1 Capacity Table for Pallet Loading

HELLA KGaA material number	Dimensions in mm L x W x H	Package height mm	Number of boxes		Number of layers Industrial pallet	Number of layers Euro-pallet
			Indu.	Euro.		
Number of packages Module 1						
487 015-40/-00	595 x 395 x 520 = A	1230**/1200	10	8	2 layers at 5 units	2 layers at 4 units
487 016-40/-00	595 x 395 x 355 = A	905**/875	10	8	2 layers at 5 units	2 layers at 4 units
487 017-40/-00	595 x 395 x 271 = A	1015**/985	15	12	3 layers at 5 units	3 layers at 4 units
Number of Packages Module 2						
487 067-05	397 x 298 x 275 = A 383 x 283 x 247 = I	945	30	24	3 layers at 10 units	3 layers at 8 units
487 068-05	397 x 298 x 223 = A 383 x 283 x 193 = I	990	40	32	4 layers at 10 units	4 layers at 8 units
487 069-05	397 x 298 x 185 = A 383 x 283 x 157 = I	1025	50	40	5 layers at 10 units	5 layers at 8 units
Number of Packages, individual						
487 060-05	597 x 397 x 365 = A 583 x 383 x 335 = I	1215	15	12	3 layers at 5 units	3 layers at 4 units
487 061-05	597 x 397 x 277 = A 583 x 383 x 247 = I	945	15	12	3 layers at 5 units	3 layers at 4 units
487 062-05	585 x 245 x 210 = A 570 x 230 x 180 = I	1200	40	-	5 layers at 8 units	-
487 063-05	597 x 266 x 275 = A 583 x 251 x 245 = I	945	-	18	-	3 layers at 6 units
487 065-05	497 x 298 x 275 = A 483 x 283 x 247 = I	945	24	18	3 layers at 8 units	3 layers at 6 units
487 070-05	294 x 265 x 282 = A 289 x 250 x 252 = I	945	-	36	-	3 layers at 12 units
487,042-05	800 x 400 x 365 = A 785 x 385 x 335 = I	1240	-	9	-	3 layers at 3 units
487,064-00	795 x 170 x 200 = A 780 x 155 x 170 = I	1150	-	35	-	5 layers at 7 units

** with cover frame

8. Labels

8.1 Label size and use

Three label sizes have been defined for the different packaging variants. Their application is based on the dimensions of the product / dispatch boxes and their requirements. A respective assignment of the labels to be used can be found in the tables of the Module Systems.

Labels are always applied on the application bar printed on the dispatch as well as on the product boxes.

Label size I: 75 mm x 50 mm, HELLA KGaA material number 824.008-18M (standard) and 824.008-36M (opac)

Use: Product boxes, dispatch boxes

Label size II: 60 mm x 27 mm, HELLA KGaA material number 824.009-68M (standard) and 824.008-37M (opac)

Use: Product boxes

Label size III: 75 mm x 100 mm, HELLA KGaA material number 824.009-93M (standard) and 824.008-35M (opac)

Use: Product boxes

8.2 Material blank labels



Adhesive labels

Product: Adhesive labels

Version: HKS 4, yellow, printed with special color

Material: Adhesive paper Chromo white, Raflacoat RP 51 permanent

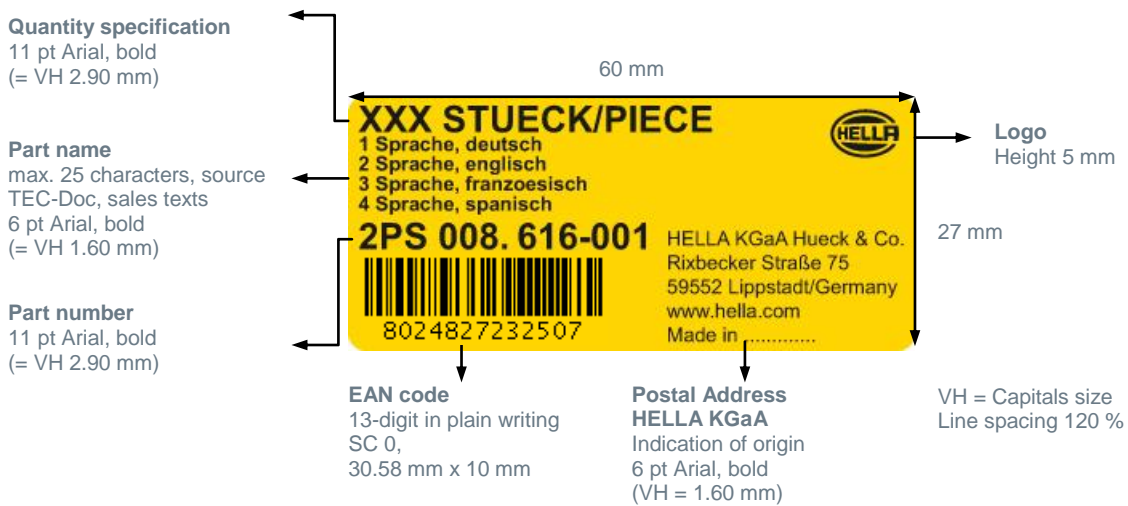
Print: individual, thermotransfer print, black

Please ask the HELLA Product Management for HELLA KGaA contract suppliers for blank labels!

8.3 Label design, label I: 75 mm x 50 mm for dispatch and product boxes



8.4 Label design, label II: 60 mm x 27 mm for HELLA - D product boxes



IMPORTANT NOTE:

EAN-codes are created exclusively by HELLA KGaA or HELLA subsidiaries. Any deviations must be expressly approved by HELLA Product Management.

8.5 Label design III: Special solution 75 mm x 100 mm

For vehicle-specific applications when development / production is executed by supplier (not HELLA):

- Headlamps/Headlamp inserts
- Combination rearlamps
- Indicator lights
- Veh.-sp. fog lights
- Housing
- Lens

Vehicle-specific accessories without designed packaging or designed label:

- Upgrade headlamps
- Upgrade combination rearlamps
- Reversing lights
- Indicator lights
- Veh.-sp. fog lights
- Daytime running lights
- Housing



IMPORTANT NOTE:

Required pictograms are provided in a suitabel print format Please contact your product manager. Further obligatory pictograms/safety signs can be created individually!

Sales texts are provided by the Product Manager (based on TEC-Doc) if they cannot be taken from the TEC-DOC database by the supplier / HELLA packaging planner. **Only these sales texts are binding!**

The part name must be given in the four languages listed and in the given order (German, English, French, Spanish). If country-specific special solutions are required, these must be solved by means of an additional label. Exceptions must be expressly approved by HELLA KGaA. Vehicle data always without indication of model year.

9. Packaging data sheet

For the documentation of the packaging and incoming goods inspection, a completely filled-in packaging data sheet is required. Please request the HELLA form HF-5532_GH from the responsible Product Manager! The packaging data sheet agreed between supplier and Product Manager must be available before the first delivery at the latest.

Date: _____
Sheet: _____ of _____

HELLA Hella KGaA Hueck & Co. Formular 5532

Packaging Data Sheet

Packaging:

Name: _____	Article dimensions	Length: _____ mm	Width: _____ mm	Height: _____ mm
Reference number: _____				
Status / Date: _____ / _____	Net weight:	Gram: _____		

Trade-unit structure:

Packaging size:
Please list the components that comprise the trade unit of the loading unit.
The packed sales items (VA) / units are counted here

Note: Please fill in complete data when using non-Hella packaging. Overwrite Excel phrases.

No.	Packaging size	Diagram	Code	No. Hella folding box or dispatch box	Number of sales items	Length:	Width:	Height:
						_____ mm	_____ mm	_____ mm
1	Packaging size Small (VPK)		VPK			_____ mm	_____ mm	_____ mm
2	Packaging size Large (VPG)		VPG			_____ mm	_____ mm	_____ mm
3	Packaging size Layer (VPL)		VPL			_____ mm	_____ mm	_____ mm
4	Packaging size Pallet (VPP)		VPP			_____ mm	_____ mm	_____ mm

Notes on packaging size:
Packaging size Small (VPK): Smallest packed sales unit.
Packaging size Large (VPG): Combination of several VPKs, for example in one dispatch box.
Packaging size Layer (VPL): Quantity of sales items in one complete Layer on the pallet.
Packaging size Pallet (VPP): Maximum quantity of sales items / unit on the pallet.

Product and shipment cardboard packaging:

Please list which packaging is used in what quantity for each load unit.

No.	Hella. no. and/or..	Cardboard packaging name	Net weight packaging in gram	Number per loading unit	M = returnable E = non-returnable	Length:	Width:	Height:
1	_____	_____	_____	_____	_____	_____ mm	_____ mm	_____ mm
2	_____	_____	_____	_____	_____	_____ mm	_____ mm	_____ mm
3	_____	_____	_____	_____	_____	_____ mm	_____ mm	_____ mm

Inner packaging:

Please list which packaging aids are used in which quantities per load unit. (PE bags, bubble wrap, compartment dividers etc.)

Note: If shipping cartons Hella-D (Packaging guideline p. 10 chapter 2.3.3) or non-Hella packaging are used the supplier will approve that the inner packaging protects the product according to drop test DIN ISO 22248 criteria.

No.	Hella. no. and/or..	Packaging name	Net weight packaging in gram	Number per loading unit	Only for VPK (Data for REA)	M = returnable E = non-returnable	Length:	Width:	Height:
1	_____	_____	_____	_____	_____	_____	_____ mm	_____ mm	_____ mm
2	_____	_____	_____	_____	_____	_____	_____ mm	_____ mm	_____ mm
3	_____	_____	_____	_____	_____	_____	_____ mm	_____ mm	_____ mm
4	_____	_____	_____	_____	_____	_____	_____ mm	_____ mm	_____ mm
5	_____	_____	_____	_____	_____	_____	_____ mm	_____ mm	_____ mm
6	_____	_____	_____	_____	_____	_____	_____ mm	_____ mm	_____ mm

Loading unit:

Please list which loading unit is used. (e.g. Euro pallet)

No.	Hella. no. and/or..	Loading unit name	Net weight Loading unit in gram	Number per loading unit	M = returnable E = non-returnable	Length:	Width:	Height:
1	_____	_____	_____	_____	_____	_____ mm	_____ mm	_____ mm

Packaging aids:

Please list which outer packaging aids are used in which quantities per loading unit. (e.g. intermediate layer, frames)

No.	Hella. no. and/or..	Packaging name	Net weight packaging in gram	Number per loading unit	M = returnable E = non-returnable	Length:	Width:	Height:
1	_____	_____	_____	_____	_____	_____ mm	_____ mm	_____ mm
2	_____	_____	_____	_____	_____	_____ mm	_____ mm	_____ mm
3	_____	_____	_____	_____	_____	_____ mm	_____ mm	_____ mm
4	_____	_____	_____	_____	_____	_____ mm	_____ mm	_____ mm

Packaging description: _____ **Description, photo/sketch of the loading unit:** _____

Remark: _____

Signature:

Supplier:		Product coordinator:		Packaging planner:	
contact person:	_____	contact person:	_____	contact person:	_____
Department:	_____	Department:	_____	Department:	_____
Phone:	_____	Phone:	_____	Phone:	_____
Fax:	_____	Fax:	_____	Fax:	_____
E-Mail:	_____	E-Mail:	_____	E-Mail:	_____
Date/ Signature:	_____	Released: granted <input type="checkbox"/> not granted <input type="checkbox"/>	_____	Released: granted <input type="checkbox"/> not granted <input type="checkbox"/>	_____

10. Positioning of labels

Labels are positioned on the application bar or, if inexistent, on the bottom right of the narrow side.

IMPORTANT NOTE:

A special solution, e.g. additionally required labels, must be approved by HELLA KGaA!

11. Changes made since the previous edition

First Edition