



BRIEF INFORMATION

Warning light BST-Round

- › Set of two BST-Round flashers and one controller
- › Various flashing patterns
- › Day / night mode included
- › Can be synchronized with multiple units
- › Clear or dark lens and different signal colours

PRODUCT FEATURES

The BST-Round warning light is characterised by its new round design, which allows flexible installation. Four power LEDs and high-quality precision optics generate an intensive warning signal with minimum power consumption.

The warning lights are supplied as a set consisting of a controller, two flasherheads and two mounting rings. The power supply cable has an open end and the mounting rings as well as the mounting brackets allow easy and flexible installation. Due to the high-quality aluminium housing, the warning light is extremely temperature resistant. It can be used at -40 °C to +80 °C. The warning lights have different flash patterns, e.g. single flash or double flash. Further details on the different flash sequences can be found in the assembly instructions. In addition, the BST round warning lights are ECE-R65 and SAE homologated.

The relevant country-specific legal requirements and guidelines for motor vehicles must be observed when installing the product.



The BST-Round warning lights are supplied as a pre-configured set.



Clear lens

The round warning lights are equipped with a clear lens as standard and the use of coloured LEDs allows different signal colours. All available product variants with clear lenses are listed in the product overview.



Dark lens

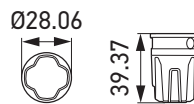
The warning light BST-Round is also available with a dark lens on request. This variant is also supplied as a pre-configured set and generates a blue warning signal. Since the warning light with dark lens is inconspicuous and not immediately recognisable, it is particularly suitable for concealed use.

TECHNICAL DETAILS

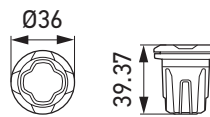
Technical data

Operating voltage range	Multi-voltage (11–30 V)
Rated voltage	12 V and 24 V
Current consumption	2.27–2.75 A (12 V) 1.27–1.37 A (24 V)
Power consumption	27–33 W
Light function	Flashing
Light source	LED
Material	Housing: aluminium
Weight	100 g
Temperature range	-40 °C to +80 °C
Protection class	Lighthouse: IP 6K4K, IP 6K9K Controller: IP X7
Approved	ECE-R10, ECE-R65 XA1 (amber), ECE-R65 XB2 (blue), ECE-R65 XR2 (red)
Compliant	SAE J845 Class 1, CISPR 25 Class 3
Protection	Polarity reversal protection
Connection	Cable length: 180 mm from light head to connector, 790 mm from light head to controller, 1,850 mm from controller to power supply open end

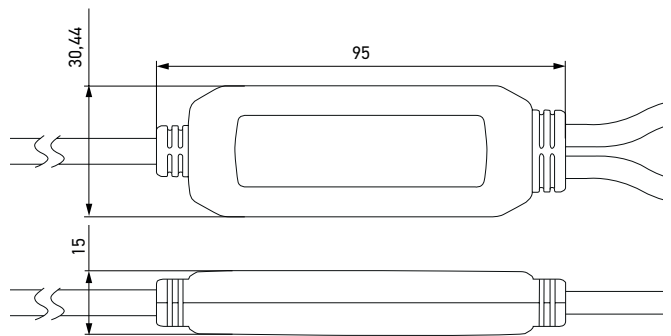
Technical drawing



BST-Round



BST-Round with mounting ring (grommet)

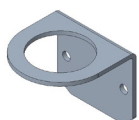


BST-Round – Controller

PROGRAM OVERVIEW

Product Image	Description	Approval	Lens	Warning Signal	Part number
	BST-Round, 1 controller, 2 flasherheads, 2 grommets	ECE	Clear	Blue	2XD 014 564-001
	BST-Round, 1 controller, 2 flasherheads, 2 grommets	SAE	Clear	Blue	2XD 014 564-101
	BST-Round, 1 controller, 2 flasherheads, 2 grommets	ECE	Clear	Amber	2XD 014 564-211*
	BST-Round, 1 controller, 2 flasherheads, 2 grommets	SAE	Clear	Amber	2XD 014 564-401
	BST-Round, 1 controller, 2 flasherheads, 2 grommets	ECE	Clear	Red	2XD 014 564-601
	BST-Round, 1 controller, 2 flasherheads, 2 grommets	SAE	Clear	Red	2XD 014 564-701
	BST-Round, 1 controller, 2 flasherheads, 2 grommets, SAE only	SAE	Clear	White	2XD 014 564-801
	BST-Round, dark lens, especially for hidden use, 1 controller, 2 flasherheads, 2 grommets	ECE	Dark	Blue	Available on request
	BST-Round, dark lens, especially for hidden use, 1 controller, 2 flasherheads, 2 grommets	SAE	Dark	Blue	Available on request
	BST-Round, 1 controller, 2 flasherheads, 2 grommets	ECE	Clear	Blue / Amber	2XD 014 564-011
	BST-Round, 1 controller, 2 flasherheads, 2 grommets	ECE	Clear	Blue / Red	2XD 014 564-021
	BST-Round, 1 controller, 2 flasherheads, 2 grommets	ECE	Clear	Red / Amber	2XD 014 564-611

ACCESSORIES



2 L-brackets

9XD 863 533-101

* K-approval variant available on request