



BRIEF INFORMATION

LED side marker, position and end-outline marker lamp 345 600

- › High functional safety due to LED
- › Innovative light guide design
- › Low energy consumption

PRODUCT FEATURES

Modern design language

The innovative light guide technology features was for the first time in a side marker lamp. This produces a streamlined, linear night design which integrates perfectly into the form of the vehicle. The homogenous light distribution is groundbreaking.

Sealed to withstand high-pressure cleaning

Tested in line with FORVIA HELLA standard 67101, IP 6K9K, protected against high-pressure and steam cleaning.

Failsafe, true to the 'Fit & Forget' principle

The LED technology ensures outstanding reliability and vibration resistance. The lamp therefore has an exceptionally long design life.

Low energy consumption

The lamps combine efficient light-emitting diodes (LEDs) and precision lenses with light guide design to produce an optimum signal pattern with an exceptionally low power consumption.

A well-rounded product line

Alongside the 12 V and 24 V variants, a position lamp (PO) and end-outline marker lamps (UR) are available in the same design.

LED LIGHTING TECHNOLOGY

As a leading innovator in the field of automotive original equipment, FORVIA HELLA sets standards:

Extremely low energy consumption

By combining efficient light-emitting diodes (LEDs) and precision optics, FORVIA HELLA lights achieve the statutory light distribution with 85% less power consumption compared to bulbs!

No light-source replacement, no maintenance and extremely long service life due to optimum thermal management.

To increase light service life, the components are arranged optimized for temperature. This prevents overheating of the LEDs at extremely high temperatures. This thermal management maximizes the design life. The design life of the LEDs corresponds to that of the vehicle (depending on the operating temperature).

APPEALING NIGHT DESIGN



The innovative light guide optics produce a light line. In all side marker, position and end-outline marker lamp functions, this combines convincing, linear design with optimum visibility.

THE VERY LATEST PRODUCTION TECHNOLOGY

Quality by conviction

We work on our processes and technologies every day. This is effectively ensured by continuous further development of our manufacturing processes and production methods. Our FORVIA HELLA standards reflect our underlying quality-oriented approach. This expectation is therefore reflected in every product.

Process reliability

Fully automated production guarantees outstanding quality in terms of air-tightness and fault rate. Our processes have been established across the entire production process. Our experience demonstrates: "only those who have their processes under control can guarantee high performance at all times".

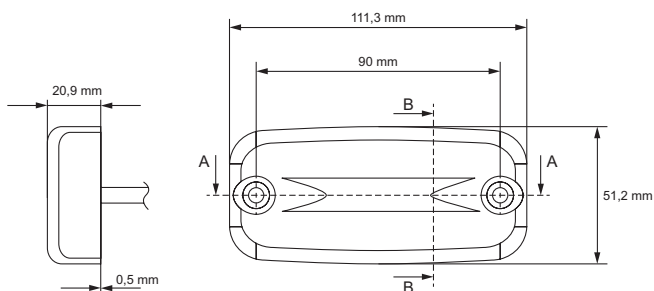
DESIGN OF LAMP



TECHNICAL DETAILS

Technical data	
Rated voltage	12 V or 24 V
Power consumption	0.6 W (12 V) 1.2 W (24 V)
Light function	Position light, side marker light, end-outline marker light
Light source	2 LEDs
Temperature range	-40 °C to +50 °C
Protection class	IP 6K9K
Approved	ECE-R3, ECE-R10, ECE-R91, ECE-R7, ADR / GGVSEB
Protection	Reversal protection
Specification	HN67101 Class 6.3
Mounting	Screwed through the lamp, 5.8 mm hole diameter
Connection	Stripped end / AMP-SUPERSEAL / 6.3 mm blade terminal




Dimensional sketch



APPLICATION EXAMPLES



PROGRAM OVERVIEW

Product picture	Rated voltage	Connection	Bracket	Part number	PU
Side marker lamp					
	12 V	500 mm cable, stripped endw	–	2PS 345 600-001	1
	12 V	500 mm cable, stripped end	–	2PS 345 600-007	12
	24 V	500 mm cable, stripped end	–	2PS 345 600-011	1
	24 V	500 mm cable, stripped end	–	2PS 345 600-017	12
	24 V	4,000 mm / 500 mm cable, system connector, bracket angled backwards, AMP SUPERSEAL 2-pin with Y-type outlet	Yes	2PS 345 600-021	1
	24 V	4,000 mm / 500 mm cable, system connector, bracket angled backwards, AMP SUPERSEAL 2-pin with Y-type outlet	Yes	2PS 345 600-027	20
	24 V	4,500 mm cable, system connector, bracket angled backwards, AMP SUPERSEAL 2-pin	Yes	2PS 345 600-031	1
	24 V	4,500 mm cable, system connector, bracket angled backwards, AMP SUPERSEAL 2-pin	Yes	2PS 345 600-037	20
	24 V	4,000 mm / 500 mm cable, system connector, AMP SUPERSEAL 2-pin with Y-type outlet	–	2PS 345 600-041	1
	24 V	4,000 mm / 500 mm cable, system connector, AMP SUPERSEAL 2-pin with Y-type outlet	–	2PS 345 600-047	20
	24 V	4,500 mm cable, system connector, AMP SUPERSEAL 2-pin	–	2PS 345 600-051	1
	24 V	4,500 mm cable, system connector, AMP SUPERSEAL 2-pin	–	2PS 345 600-057	20
	12 V	500 mm cable, stripped end	Yes	2PS 345 600-061	1
	12 V	500 mm cable, stripped end	Yes	2PS 345 600-067	20
	24 V	500 mm cable, stripped end	Yes	2PS 345 600-071	1
	24 V	500 mm cable, stripped end	Yes	2PS 345 600-077	20
	24 V	5,500 mm / 500 mm cable, bracket angled backwards, AMP 6.3 mm, 0.8 mm blade terminal with Y-type outlet	Yes	2PS 345 600-091	1
	24 V	2,000 mm / 500 mm cable, system connector, AMP 2-pin, stripped end with Y-type outlet	–	2PS 345 600-101	1
	24 V	2,000 mm / 500 mm cable, system connector, AMP 2-pin, stripped end with Y-type outlet	Yes	2PS 345 600-111	1
	24 V	5,000 mm cable, stripped end	–	2PS 345 600-137	20
	24 V	10,000 mm cable, stripped end	–	2PS 345 600-147	20
	24 V	1,500 mm cable and system connector, AMP SUPERSEAL 2-pin	Yes	2PS 345 600-157	20
	24 V	1,500 mm cable, stripped end	Yes	2PS 345 600-167	20
	24 V	1,500 mm cable and base, stripped end	–	2PS 345 600-177	20
	24 V	1,500 mm cable, AMP SUPERSEAL 2-pin	–	2PS 345 600-197	20
Tail lamp/end-outline marker lamp					
	12 V	5,000 mm cable, stripped end	–	2TM 345 600-307	20
	24 V	5,000 mm cable, stripped end	–	2TM 345 600-317	20
Position lamp					
	24 V	500 mm encapsulated cable, stripped end	–	2PG 345 600-401	1
	24 V	5,000 mm encapsulated cable, stripped end	–	2PG 345 600-411	1